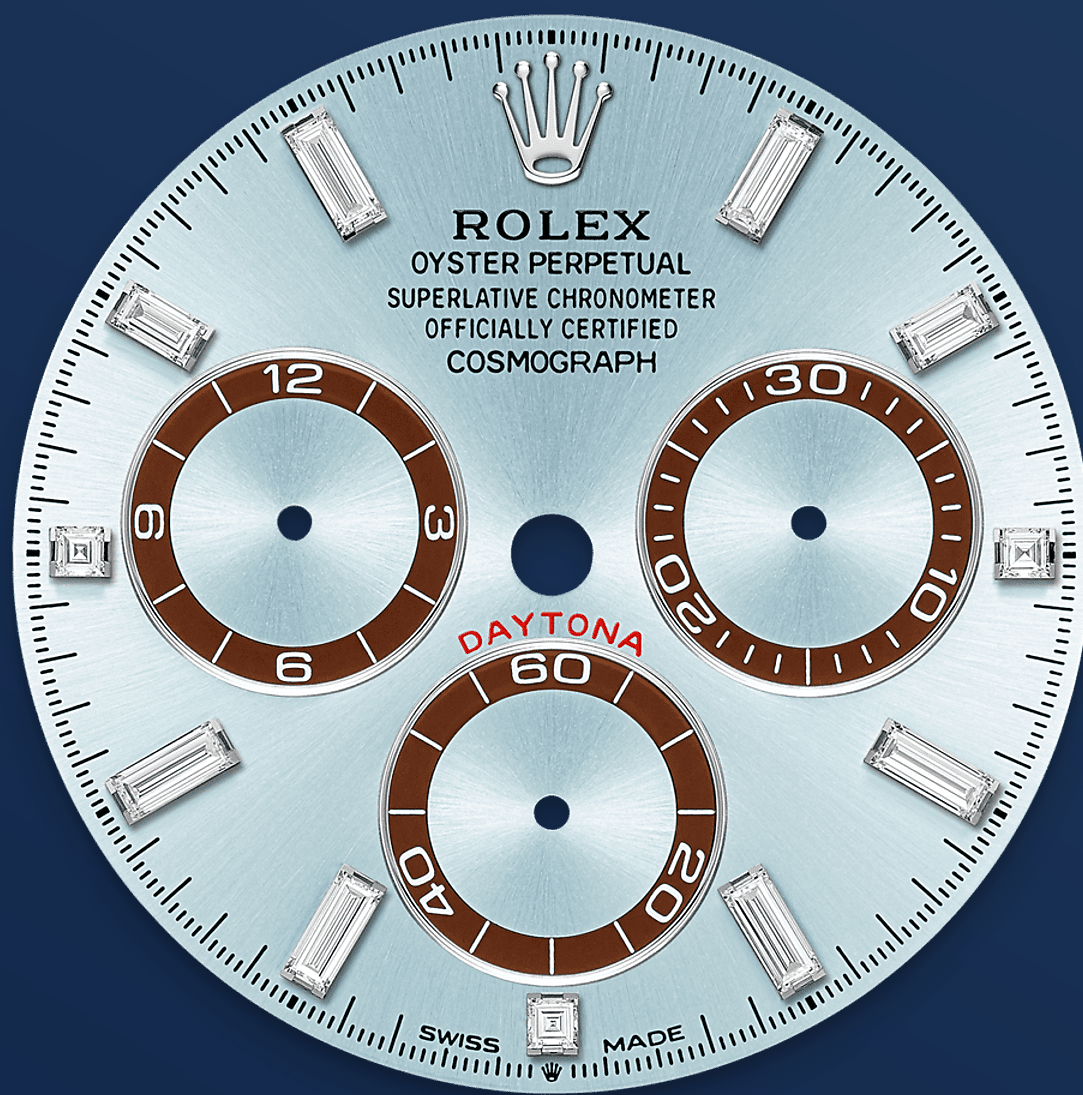




# Cosmograph Daytona

Oyster, 40 mm, platinum

**The Oyster Perpetual  
Cosmograph Daytona in  
platinum with an ice-  
blue, diamond-set dial  
and contrasting counter  
rings. It features an  
Oyster bracelet and a  
chestnut brown  
Cerachrom bezel with  
tachymetric scale.**



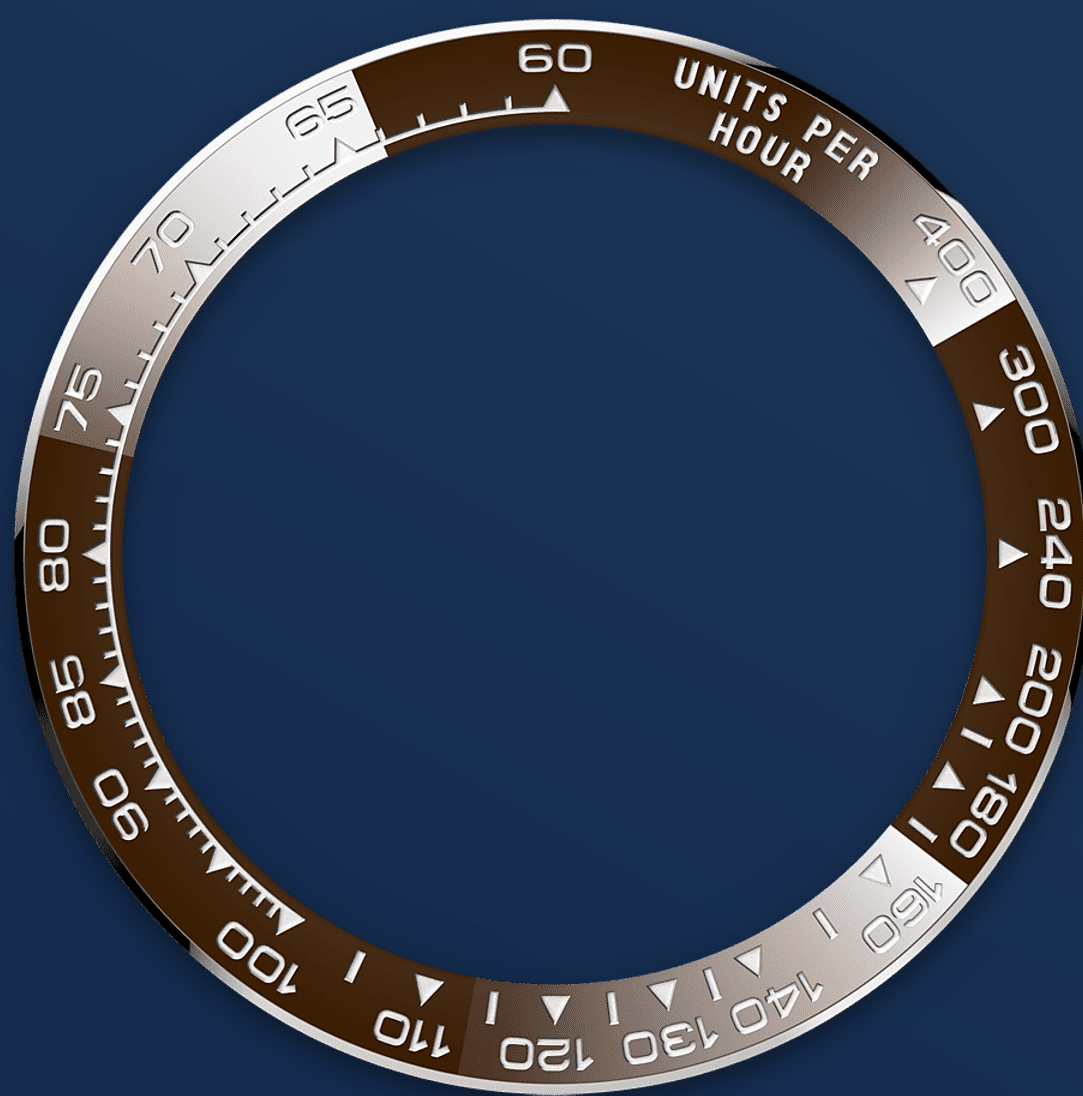
ICE-BLUE DIAL

## With chronograph counters

This model features an ice-blue, diamond-set dial with 18 kt gold applique hour markers and hands with a Chromalight display, a highly-legible luminescent material.

The dial allows drivers to accurately map out their track times and tactics without fail.





THE TACHYMETRIC SCALE

## High-performance chronograph

A key part of the model's identity is the bezel moulded with a tachymetric scale for measuring average speeds of up to 400 miles or kilometres per hour. The monobloc Cerachrom bezel in high-tech ceramic offers a number of advantages: it is corrosion resistant, virtually scratchproof and the colour is unaffected by UV rays.

This extremely durable bezel also offers an exceptionally legible tachymetric scale, thanks to

the deposition of a thin layer of platinum in the numerals and graduations via a PVD (Physical Vapour Deposition) process. The monobloc Cerachrom bezel is made in a single piece and holds the crystal firmly in place on the middle case, ensuring waterproofness.



PLATINUM

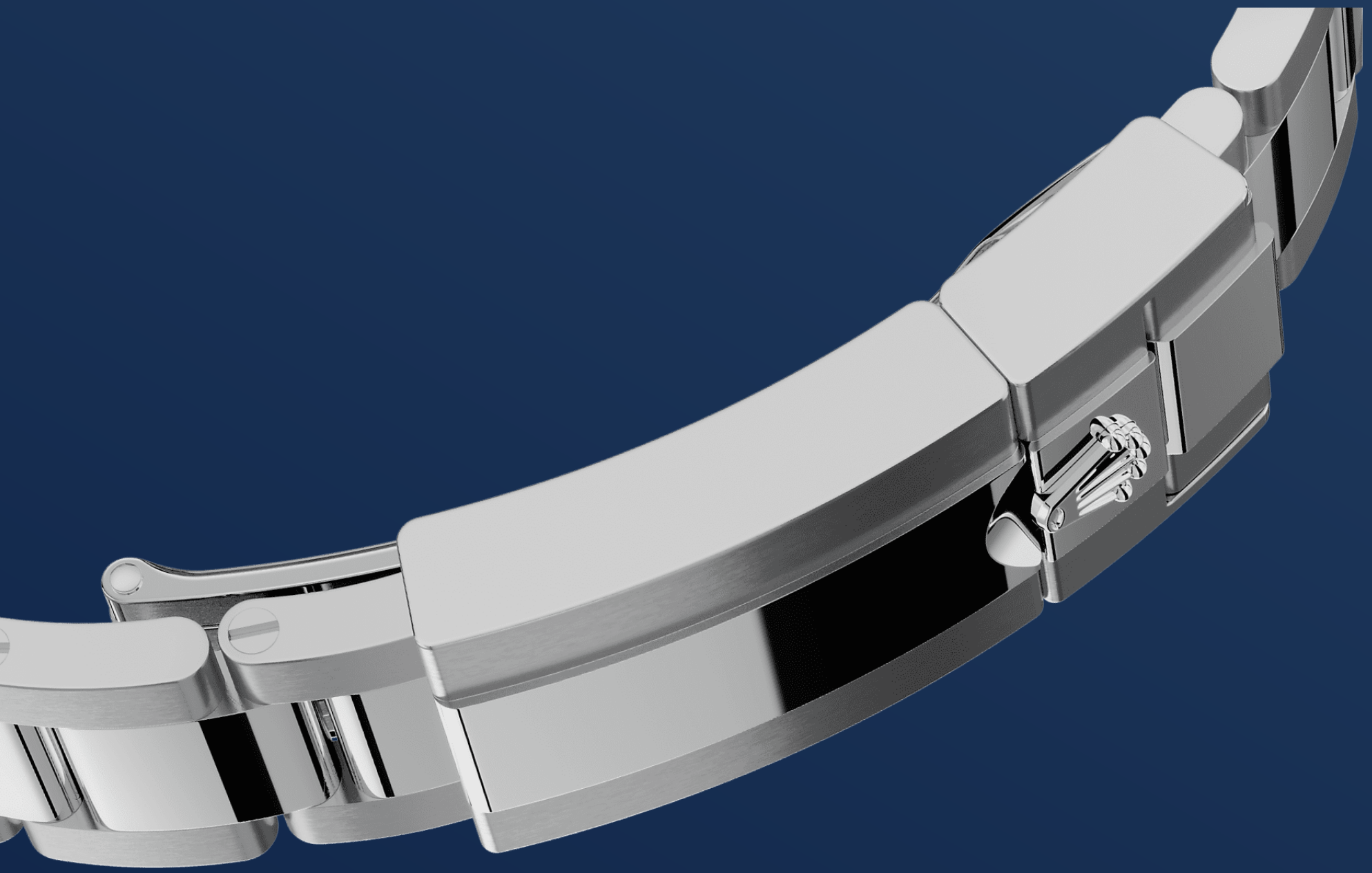
## The noblest of metals

Rare and precious, platinum is striking for its silvery whiteness and vibrant luminosity. It is among the densest and heaviest metals in the world, distinguished by unique chemical and physical properties such as exceptional corrosion resistance.

Paradoxically, it is also soft, elastic and highly malleable, which makes machining and polishing especially difficult, demanding an extremely high degree of skill. Rolex always uses 950 platinum, an alloy consisting of 950‰ (thousandths)

platinum, painstakingly crafted in-house by the fine metalworkers at Rolex. The noblest of metals for the finest of watches.





THE OYSTER BRACELET

## Alchemy of form and function

The design, development and production of Rolex bracelets and clasps, as well as the stringent tests they face, involve advanced high technology. And, as with all the components of the watch, aesthetic controls by the human eye guarantee impeccable beauty.

The Oyster bracelet is a perfect alchemy of form and function. First introduced in the late 1930s, this particularly robust and comfortable metal



bracelet with its broad, flat three-piece links remains the most universal bracelet in the Oyster collection.

# More technical details

## Cosmograph Daytona

Reference 126506

### Model Case

---

#### Type

Oyster, 40 mm, platinum

#### Diameter

40 mm

#### Material

Platinum

#### Bezel

Chestnut brown monobloc  
Cerachrom bezel in ceramic with  
moulded numerals and graduations

#### Oyster Architecture

Monobloc middle case, screw-down  
case back and winding crown

#### Winding Crown

Screw-down, Triplock triple  
waterproofness system

#### Crystal

Scratch-resistant sapphire

#### Water Resistance

Waterproof to 100 metres / 330  
feet

### Movement

---

#### Type

Perpetual, mechanical chronograph,  
self-winding

#### Calibre

4131, manufacture Rolex

#### Precision

-2/+2 sec/day, after casing

#### Oscillator

Paramagnetic blue Parachrom  
hairspring. High-performance  
Paraflex shock absorbers

#### Winding

Bidirectional self-winding via  
Perpetual rotor

**Power reserve**

Approximately 72 hours

**Functions**

Centre hour and minute hands, small seconds hand at 6 o'clock. Chronograph via centre seconds hand, 30-minute counter at 3 o'clock and 12-hour counter at 9 o'clock. Stop seconds for exact time setting

## Bracelet

---

**Type**

Oyster, three-piece solid links

**Bracelet Material**

Platinum

**Clasp**

Folding Oysterlock safety clasp with Easylink 5 mm comfort extension link

## Dial

---

**Type**

Ice blue, chestnut brown counter rings set with diamonds

**Details**

Highly legible Chromalight display with long-lasting blue luminescence

## Certification

---

**Type**

Superlative Chronometer (COSC + Rolex certification after casing)

# Explore and discover more on Rolex.com

**All intellectual property rights such as trademarks, service marks, trade names, designs and copyrights are reserved.**

Nothing contained in this website may be reproduced without written permission. Rolex reserves the right at all times to modify the models featured in the present website.

