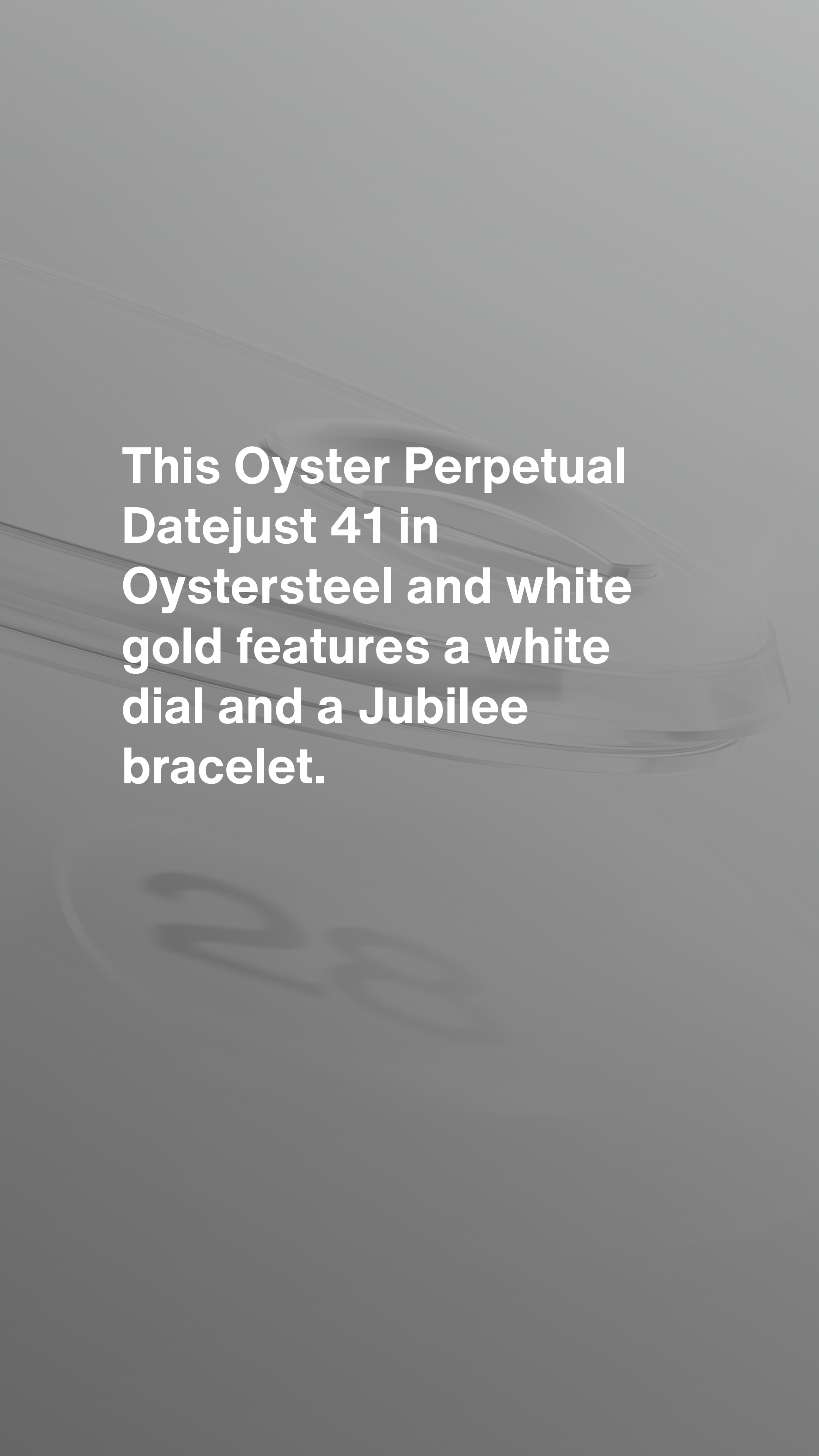




Datejust 41

Oyster, 41 mm, Oystersteel and white gold



**This Oyster Perpetual
Datejust 41 in
Oystersteel and white
gold features a white
dial and a Jubilee
bracelet.**



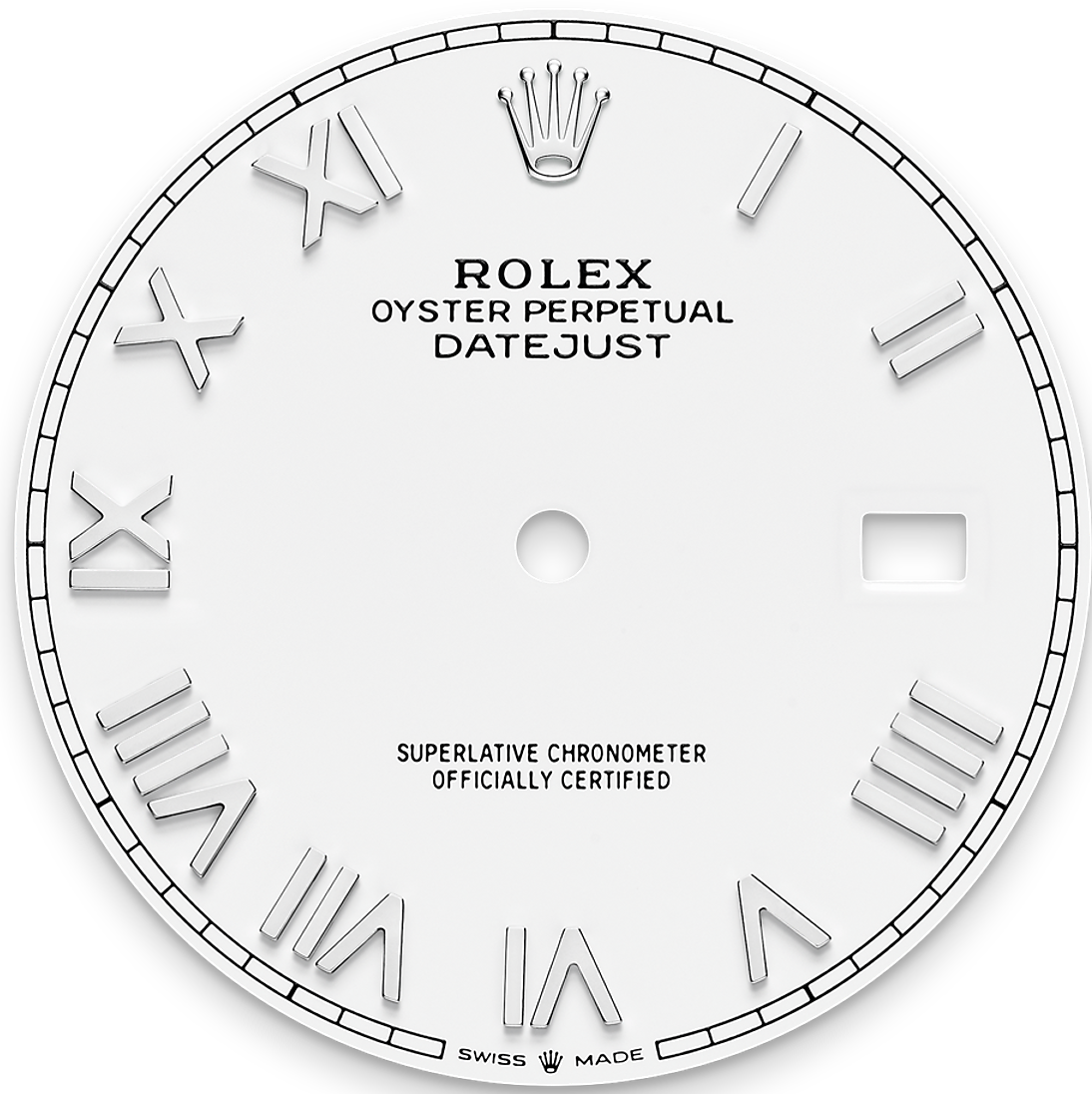
FLUTED BEZEL

A Rolex signature

The Rolex fluted bezel is a mark of distinction. Originally, the fluting of the Oyster bezel had a functional purpose: it served to screw the bezel onto the case helping to ensure the waterproofness of the watch.

It was therefore identical to the fluting on the case back, which was also screwed onto the case for waterproofness, using specific Rolex tools. Over time, the fluting became an aesthetic element, a genuine Rolex signature feature. Today the fluted

bezel is a mark of distinction, in gold on this
Datejust 41.



WHITE DIAL

Limitless freedom

Lacquer combines almost limitless freedom of colour with intensity and a smooth finish. The lacquering technique consists of successively depositing six thin layers of lacquer on a brass base plate.

A colourless varnish is then applied to give the colour or shade all of its depth and shine. Once the varnish is dry, the surface of the dial is polished to magnify the colour; the dial is then ready to be pad printed and receive its appliques.

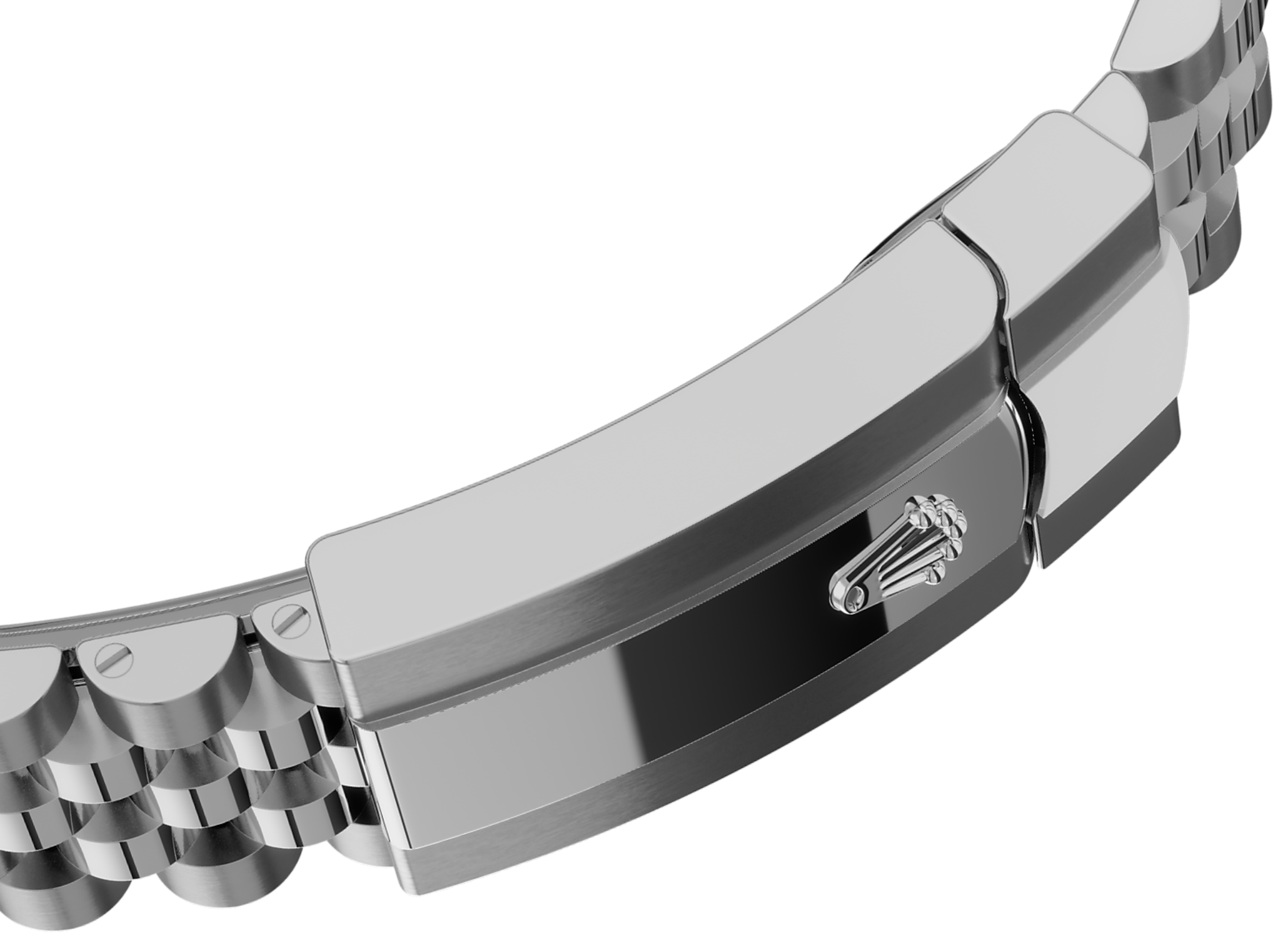


WHITE ROLESOR

A meeting of two metals

Gold is coveted for its lustre and nobility. Steel reinforces strength and reliability. Together, they harmoniously combine the best of their properties.

A true Rolex signature, Rolesor has featured on Rolex models since the early 1930s, and was trademarked as a name in 1933. It is one of the prominent pillars of the Oyster Perpetual collection.



THE JUBILEE BRACELET

Supple and comfortable

The design, development and production of Rolex bracelets and clasps, as well as the stringent tests they face, involve advanced high technology.

And, as with all the components of the watch, aesthetic controls by the human eye guarantee impeccable beauty. The Jubilee, a supple and comfortable five-piece link metal bracelet, was designed and made especially for the launch of the Oyster Perpetual Datejust in 1945.

More technical details

Datejust

Reference 126334

Model Case

Type

Oyster, 41 mm, Oystersteel and white gold

Diameter

41 mm

Material

White Rolesor

Bezel

Fluted

Oyster Architecture

Monobloc middle case, screw-down case back and winding crown

Winding Crown

Screw-down, Twinlock double waterproofness system

Crystal

Scratch-resistant sapphire, Cyclops lens over the date

Water Resistance

Waterproof to 100 metres / 330 feet

Movement

Type

Perpetual, mechanical, self-winding

Calibre

3235, Manufacture Rolex

Precision

-2/+2 sec/day, after casing

Oscillator

Paramagnetic blue Parachrom hairspring. High-performance Paraflex shock absorbers

Winding

Bidirectional self-winding via Perpetual rotor

Power reserve

Approximately 70 hours

Functions

Centre hour, minute and seconds hands. Instantaneous date with rapid setting. Stop-seconds for precise time setting

Bracelet

Type

Jubilee, five-piece links

Clasp

Folding Oysterclasp with Easylink 5 mm comfort extension link

Bracelet Material

Oystersteel

Dial

Type

White

Certification

Type

Superlative Chronometer (official chronometer certification + Rolex certification after casing)

Explore and discover more on Rolex.com

All intellectual property rights such as trademarks, service marks, trade names, designs and copyrights are reserved.

Nothing contained in this website may be reproduced without written permission. Rolex reserves the right at all times to modify the models featured in the present website.

