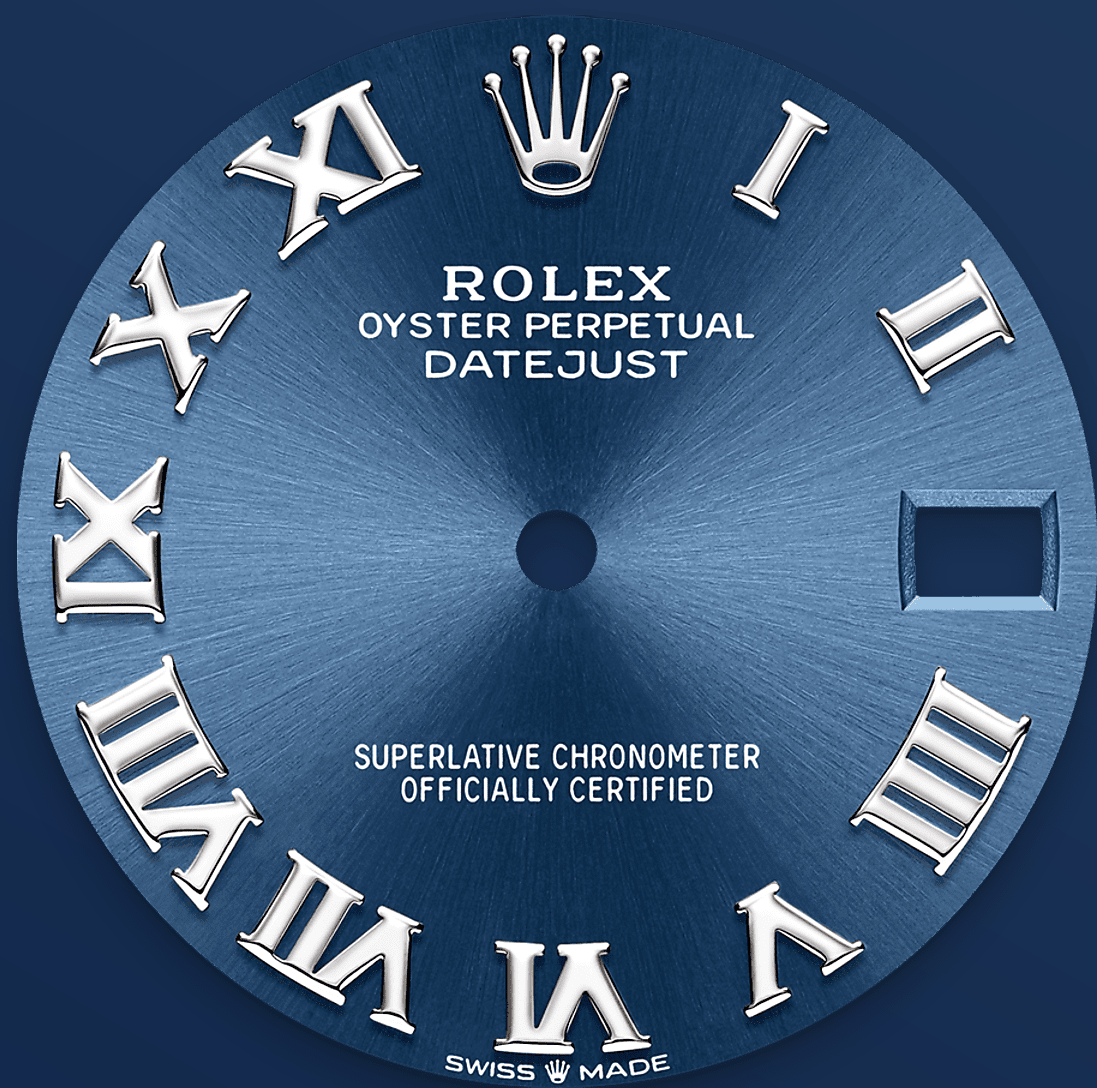




# Datejust 31

Oyster, 31 mm, Oystersteel

**This Oyster Perpetual  
Datejust 31 in  
Oystersteel features a  
bright blue dial and an  
Oyster bracelet.**



BRIGHT BLUE DIAL

## A watchmaking technique

The sunray finish creates delicate light reflections on many dials in the Oyster Perpetual collection. It is obtained using masterful brushing techniques that create grooves running outwards from the centre of the dial.

Light is diffused consistently along each engraving, creating a characteristic subtle glow that moves depending on the position of the wrist. Once the sunray finish has been completed, the

dial colour is applied using Physical Vapour Deposition or electroplating. A light coat of varnish gives the dial its final look.

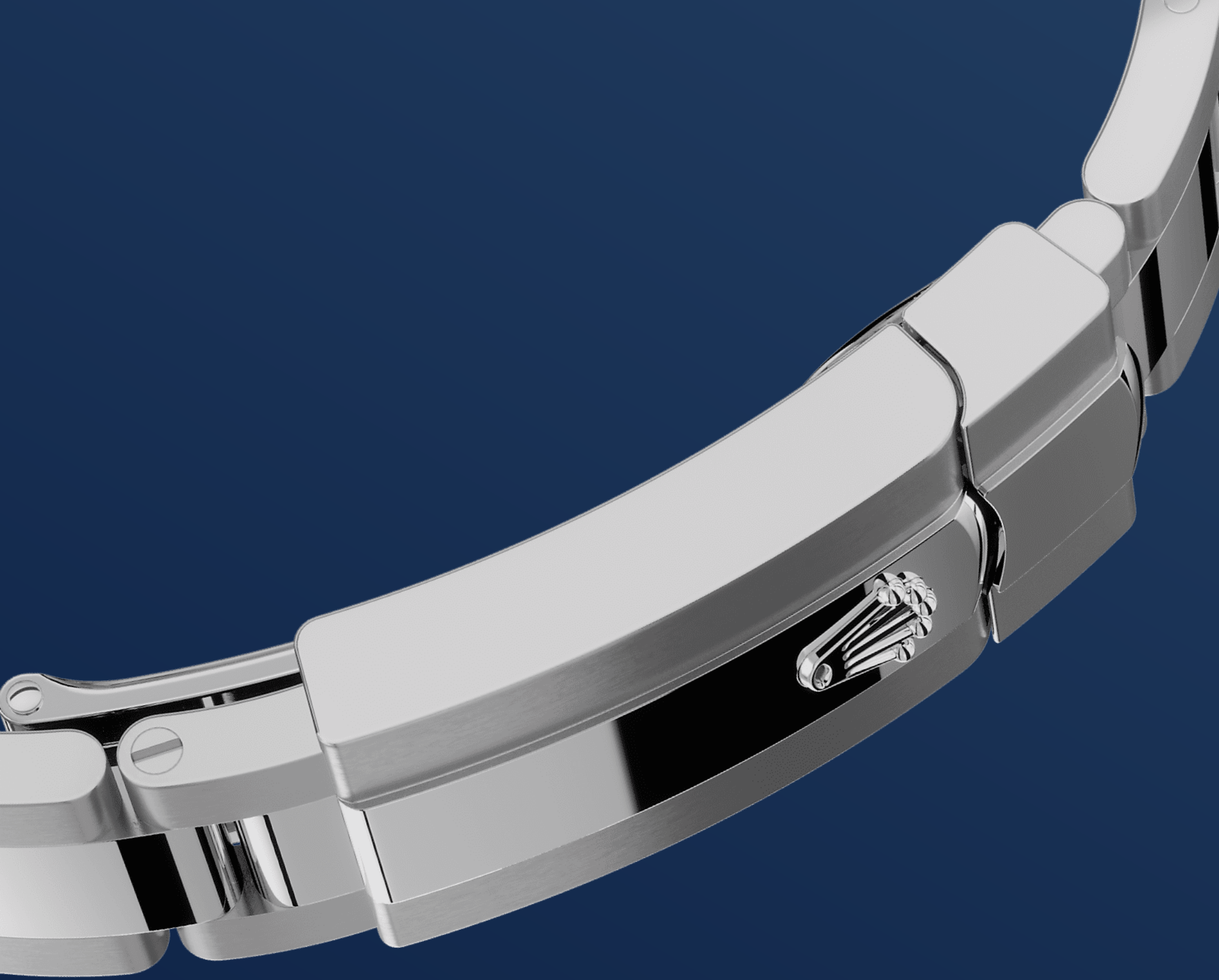


OYSTERSTEEL

## Highly resistant to corrosion

Rolex uses Oystersteel for its steel watch cases. Specially developed by the brand, Oystersteel belongs to the 904L steel family, alloys most commonly used in high-technology and in the aerospace and chemical industries, where maximum resistance to corrosion is essential.

Oystersteel is extremely resistant, offers an exceptional finish once polished and maintains its beauty even in the harshest environments.



THE OYSTER BRACELET

## Alchemy of form and function

The Oyster bracelet is a perfect alchemy of form and function, aesthetics and technology, designed to be both robust and comfortable.

It is equipped with an Oysterclasp and the Easylink comfort extension link, also exclusive to Rolex. This ingenious system allows the wearer to increase the bracelet length by approximately 5 mm, providing additional comfort in any circumstance.



## THE CYCLOPS LENS

# A magnifying lens

The Cyclops lens is one of the most distinctive Rolex features, and one of the most recognizable.

Named after the one-eyed giant of Greek mythology, the Cyclops lens magnifies the watch's emblematic date display for easy reading. Behind the Cyclops, as with every feature of a Rolex timepiece, lies a history of invention, research and development, and the endless search for perfection.

# More technical details

## Datejust

Reference 278240

### Model Case

---

#### Type

Oyster, 31 mm, Oystersteel

#### Diameter

31 mm

#### Material

Oystersteel

#### Bezel

Domed

#### Oyster Architecture

Monobloc middle case, screw-down case back and winding crown

#### Winding Crown

Screw-down, Twinlock double waterproofness system

#### Crystal

Scratch-resistant sapphire, Cyclops lens over the date

#### Water Resistance

Waterproof to 100 metres / 330 feet

### Movement

---

#### Type

Perpetual, mechanical, self-winding

#### Calibre

2236, Manufacture Rolex

#### Precision

-2/+2 sec/day, after casing

#### Oscillator

Syloxi hairspring in silicon with patented geometry. High-performance Paraflex shock absorbers



### **Winding**

Bidirectional self-winding via Perpetual rotor

### **Power reserve**

Approximately 55 hours

### **Functions**

Centre hour, minute and seconds hands. Instantaneous date with rapid setting. Stop-seconds for precise time setting

## **Bracelet**

---

### **Type**

Oyster, three-piece solid links

### **Clasp**

Folding Oysterclasp with Easylink 5 mm comfort extension link

### **Bracelet Material**

Oystersteel

## **Dial**

---

### **Type**

Bright blue

## **Certification**

---

### **Type**

Superlative Chronometer (COSC + Rolex certification after casing)

# Explore and discover more on Rolex.com

**All intellectual property rights such as trademarks, service marks, trade names, designs and copyrights are reserved.**

Nothing contained in this website may be reproduced without written permission. Rolex reserves the right at all times to modify the models featured in the present website.

