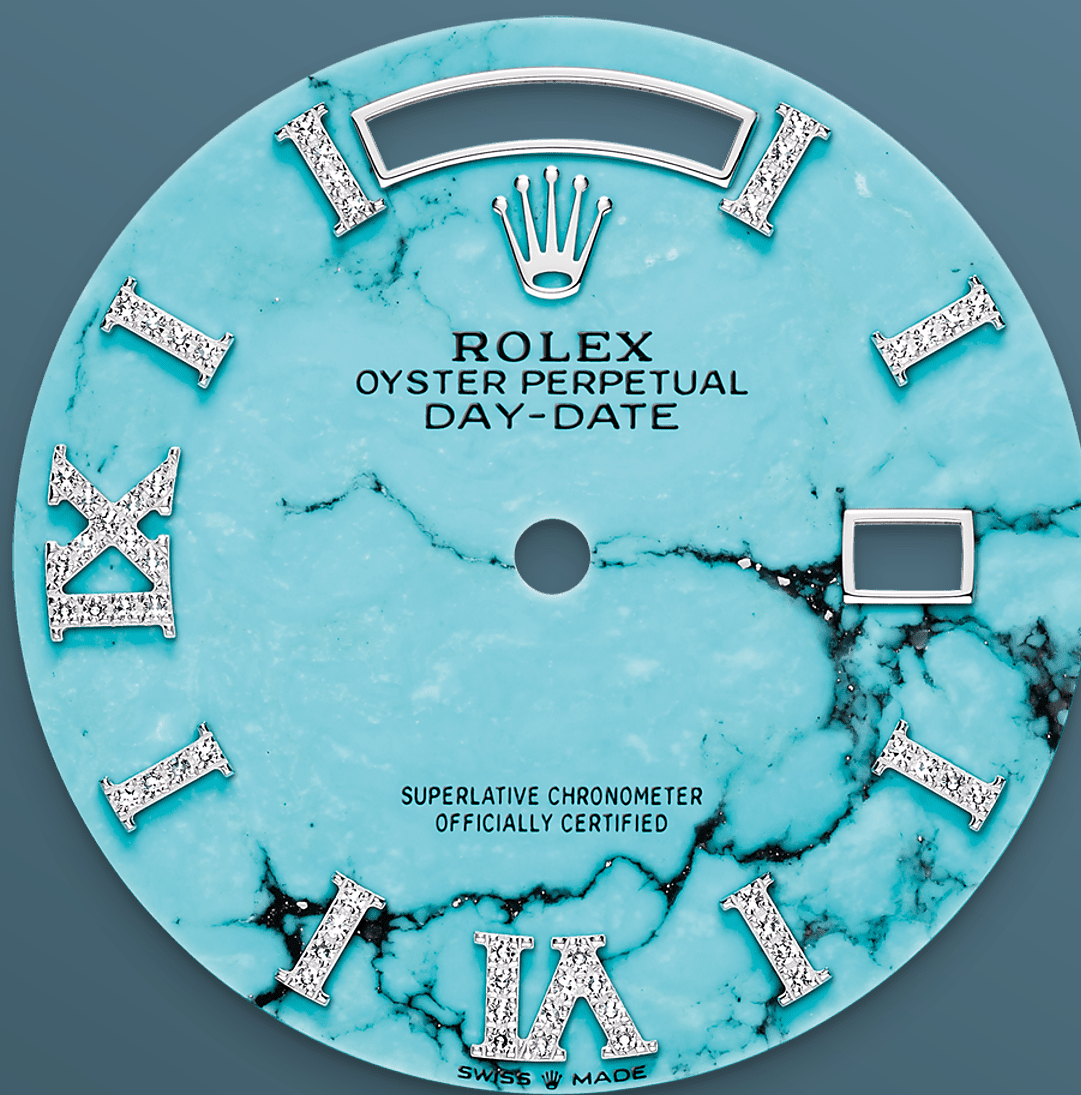




Day-Date 36

Oyster, 36 mm, platinum

**The Oyster Perpetual
Day-Date 36 in platinum
with a turquoise,
diamond-set dial, fluted
bezel and a President
bracelet.**



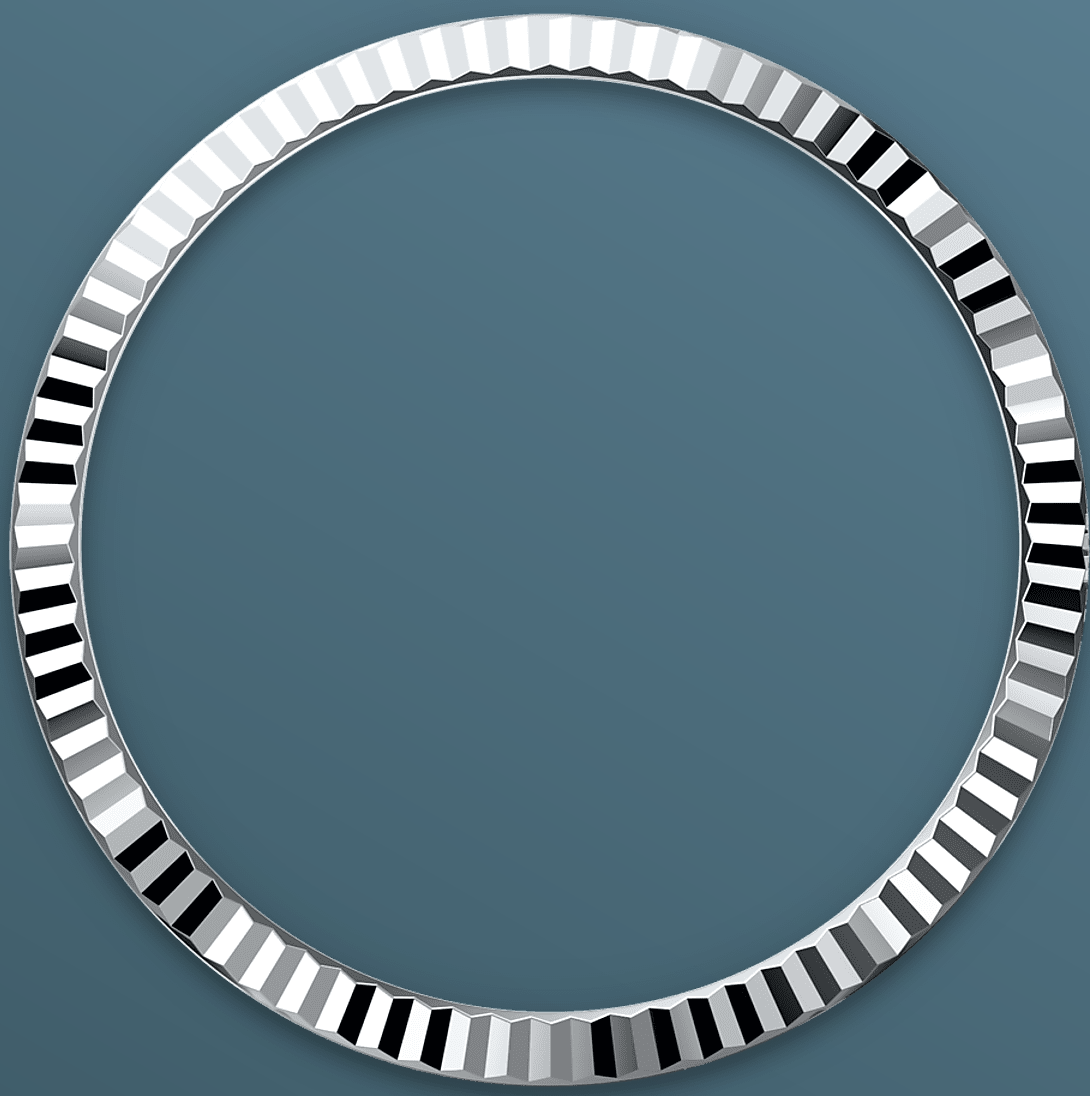
TURQUOISE DIAL

Prized for thousands of years

This dial features hour markers in 18 kt gold, set with 32 diamonds, and a Roman VI and IX in 18 kt gold, set with 24 diamonds.

Only found in a few places on Earth, turquoise has been prized for thousands of years for its special hue. Rolex selects turquoise for the beauty of its structure and its characteristic, rare blue colour, because it marries perfectly with yellow and white

gold. It is exclusively reserved for gold or platinum versions of the Day-Date 36.

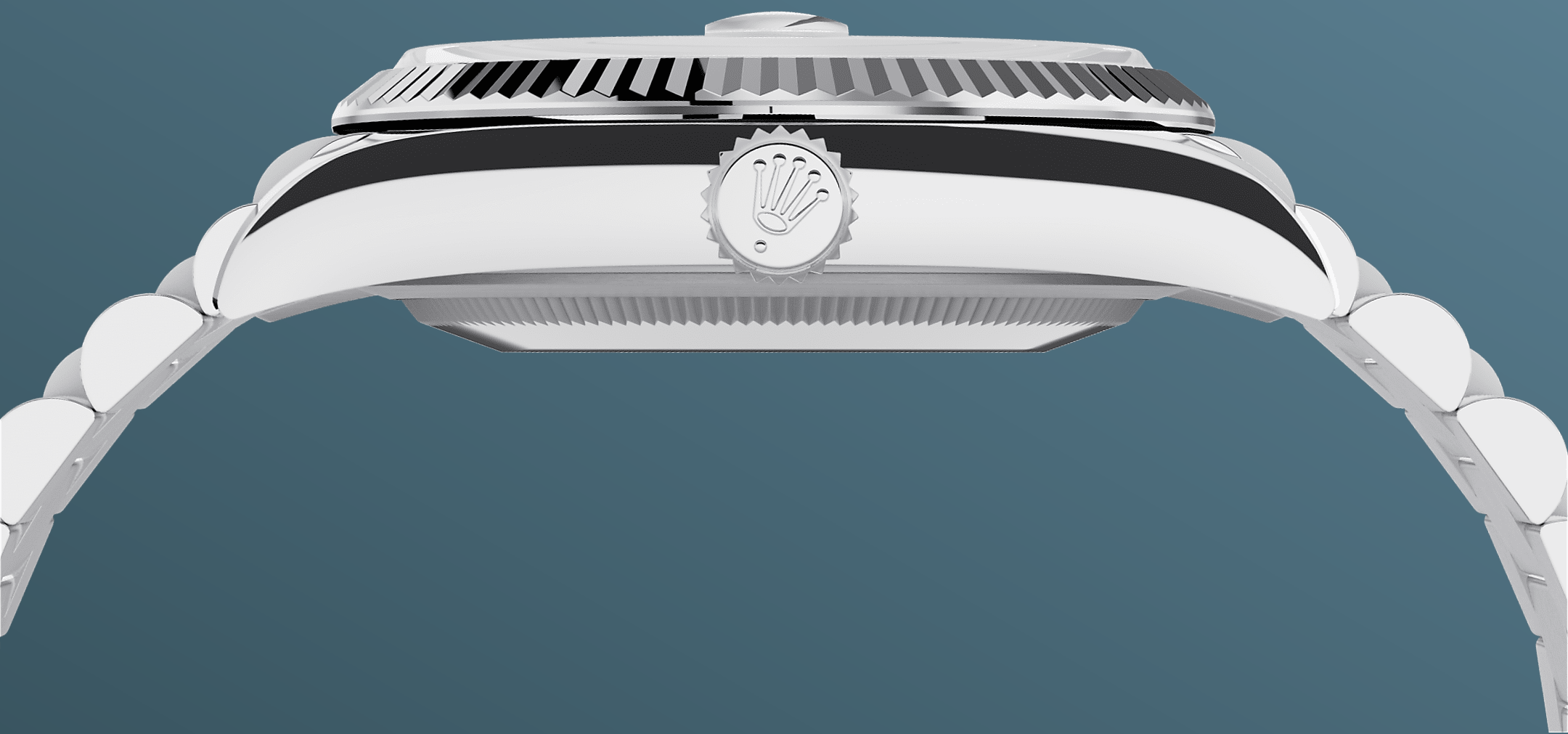


FLUTED BEZEL

A Rolex signature

The Rolex fluted bezel is a mark of distinction. Originally, the fluting of the Oyster bezel had a functional purpose: it served to screw the bezel onto the case helping to ensure the waterproofness of the watch.

It was therefore identical to the fluting on the case back, which was also screwed onto the case for waterproofness, using specific Rolex tools. Over time, the fluting became an aesthetic element, a genuine Rolex signature feature. Today the fluted



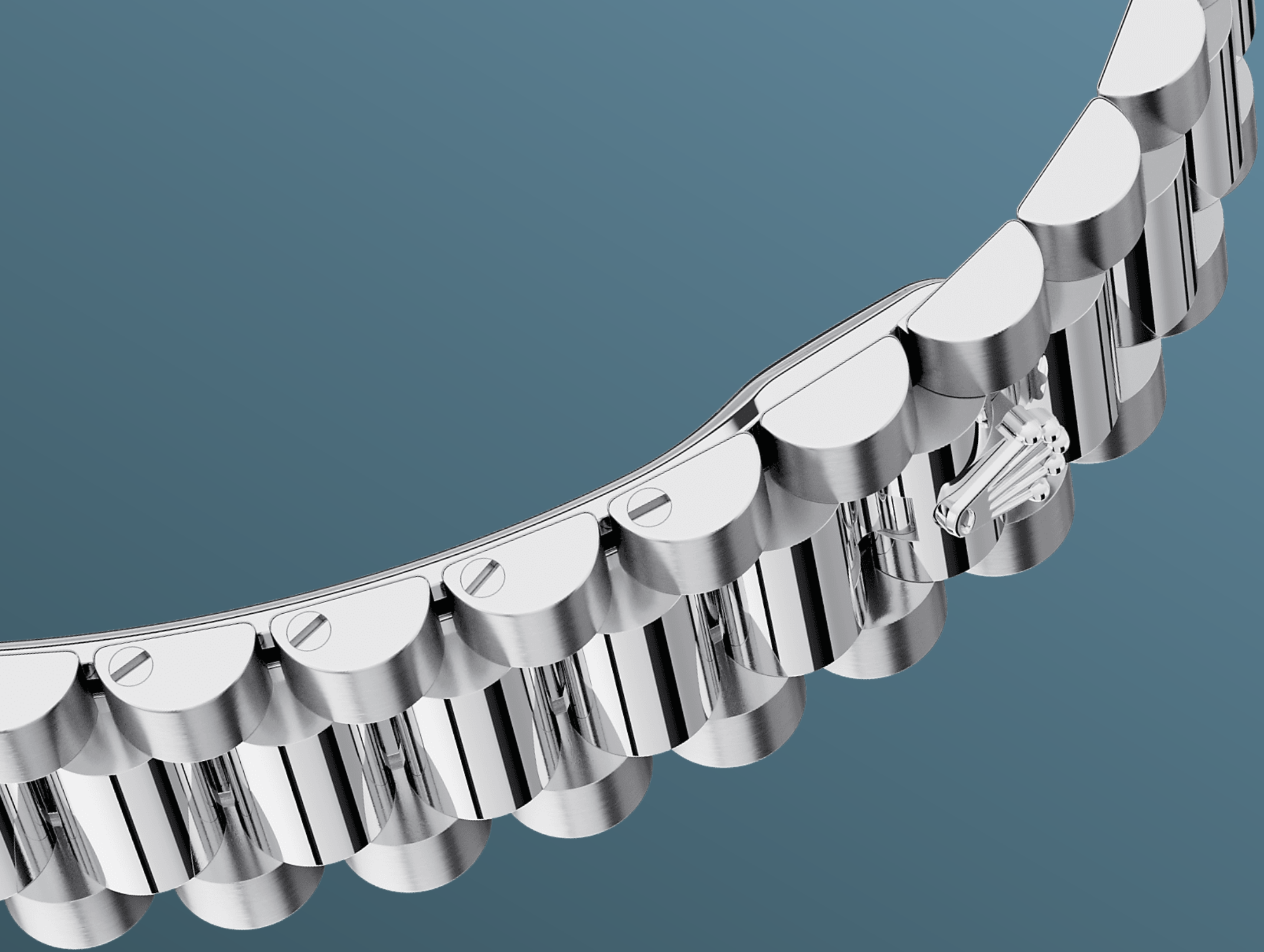
PLATINUM

The noblest of metals

Rare and precious, platinum is striking for its silvery whiteness and vibrant luminosity. It is among the densest and heaviest metals in the world, distinguished by unique chemical and physical properties such as exceptional corrosion resistance.

Paradoxically, it is also soft, elastic and highly malleable, which makes machining and polishing especially difficult, demanding an extremely high degree of skill. Rolex always uses 950 platinum, an alloy consisting of 950‰ (thousandths)

platinum, painstakingly crafted in-house by the fine metalworkers at Rolex. The noblest of metals for the finest of watches.



THE PRESIDENT BRACELET

The ultimate refinement

The design, development and production of Rolex bracelets and clasps, as well as the stringent tests they face, involve advanced high technology.

And, as with all the components of the watch, aesthetic controls by the human eye guarantee impeccable beauty. The President bracelet, with its semi-circular three piece links, was created in 1956 for the launch of the Oyster Perpetual Day-Date. It represents the ultimate in refinement and comfort and is always made of carefully selected precious metals.

More technical details

Day-Date

Reference 128236

Model Case

Type

Oyster, 36 mm, platinum

Diameter

36 mm

Material

Platinum

Bezel

Fluted

Oyster Architecture

Monobloc middle case, screw-down case back and winding crown

Winding Crown

Screw-down, Twinlock double waterproofness system

Crystal

Scratch-resistant sapphire, Cyclops lens over the date

Water Resistance

Waterproof to 100 metres / 330 feet

Movement

Type

Perpetual, mechanical, self-winding

Calibre

3255, Manufacture Rolex

Precision

-2/+2 sec/day, after casing

Oscillator

Paramagnetic blue Parachrom hairspring. High-performance Paraflex shock absorbers

Winding

Bidirectional self-winding via Perpetual rotor

Power reserve

Approximately 70 hours

Functions

Centre hour, minute and seconds hands. Instantaneous day and date in apertures, secure rapid-setting. Stop-seconds for exact time setting

Bracelet

Type

President, semi-circular three-piece links

Bracelet Material

Platinum

Clasp

Concealed folding Crownclasp

Dial

Type

Turquoise set with diamonds

Gem setting

Hour markers in 18 kt gold set with 32 diamonds, Roman VI and IX in 18 kt gold set with 24 diamonds

Certification

Type

Superlative Chronometer (COSC + Rolex certification after casing)

Explore and discover more on Rolex.com

All intellectual property rights such as trademarks, service marks, trade names, designs and copyrights are reserved.

Nothing contained in this website may be reproduced without written permission. Rolex reserves the right at all times to modify the models featured in the present website.

