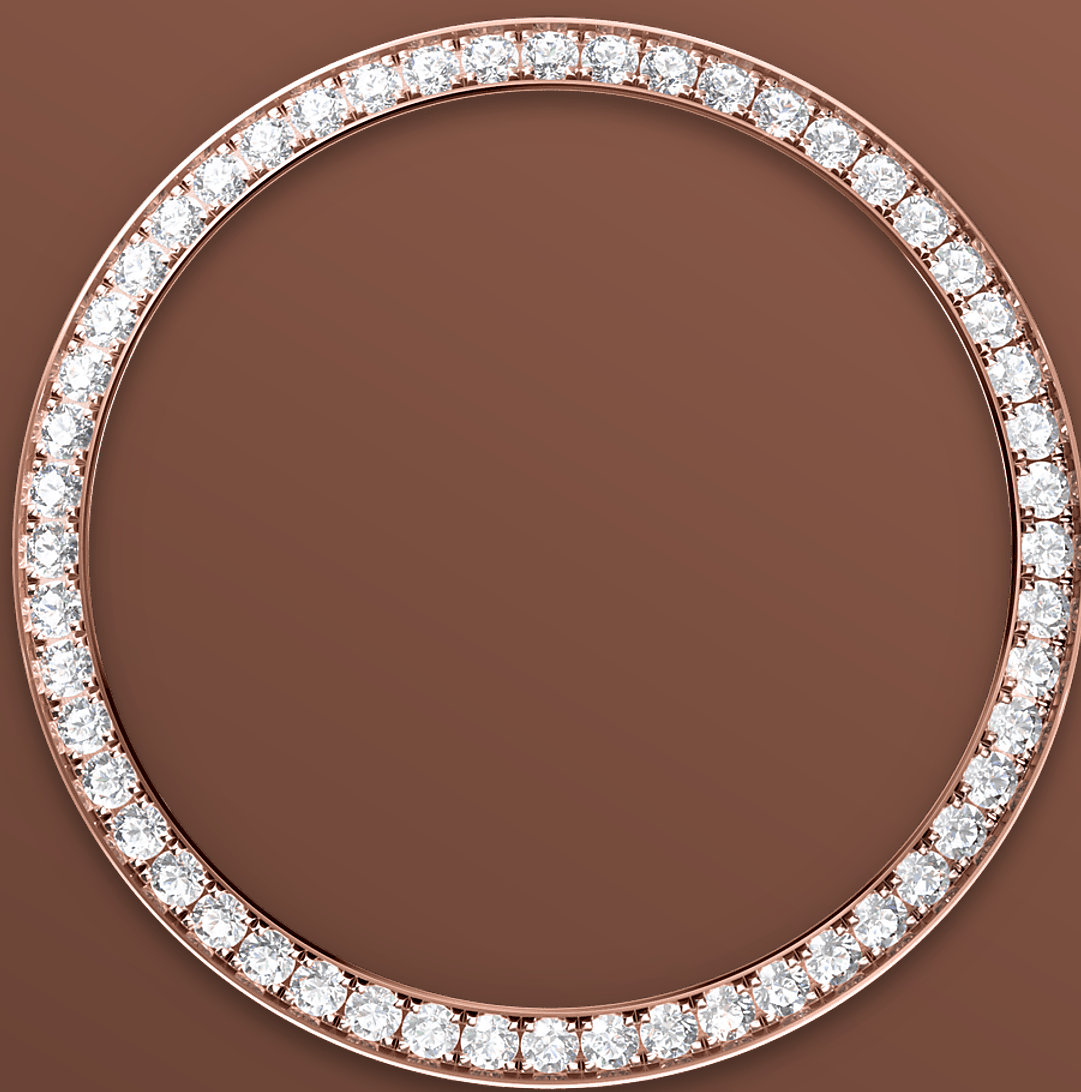




Day-Date 36

Oyster, 36 mm, Everose gold and diamonds

**The Oyster Perpetual
Day-Date 36 in 18 kt
Everose gold with a
brown ombré dial,
diamond-set bezel and a
diamond-set President
bracelet.**



DIAMOND-SET BEZEL

A sparkling symphony

Gem-setters, like sculptors, finely carve the precious metal to hand-shape the seat in which each gemstone will be perfectly lodged. With the art and craft of a jeweller, the stone is placed and meticulously aligned with the others, then firmly secured in its gold or platinum setting.

Besides the intrinsic quality of the stones, several other criteria contribute to the beauty of Rolex gem-setting: the precise alignment of the height of the gems, their orientation and position, the regularity, strength and proportions of the setting

as well as the intricate finishing of the metalwork.
A sparkling symphony to enhance the watch and
enchant the wearer.



BROWN OMBRÉ DIAL

Continuity of a design

The ombré dial features a coloured surface at the centre, progresses to a deep black around the edge. This dial represents the continuity of a design that Rolex introduced in the 1980s and relaunched in 2019.

The manufacture of these dials with a concentric gradient involves the application of black lacquer, a delicate operation overseen by a specialist whose task it is to ensure the harmonious transition from colour to darkness.

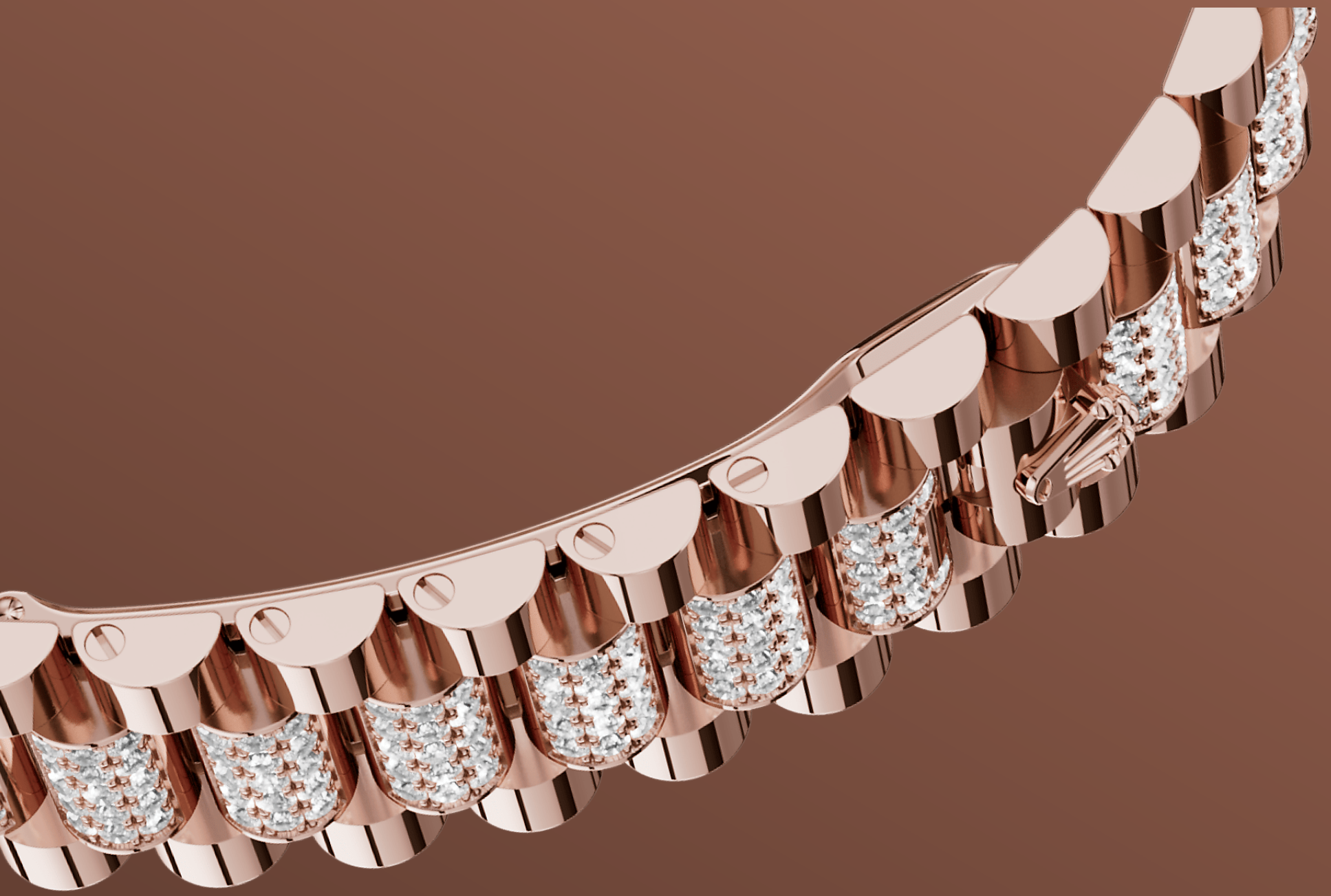


18 KT EVEROSE GOLD

An exclusive patent

To preserve the beauty of its pink gold watches, Rolex created and patented an exclusive 18 kt pink gold alloy cast in its own foundry: Everose gold.

Introduced in 2005, 18 kt Everose is used on all Rolex Oyster models in pink gold.



THE PRESIDENT BRACELET

The ultimate refinement

The design, development and production of Rolex bracelets and clasps, as well as the stringent tests they face, involve advanced high technology.

And, as with all the components of the watch, aesthetic controls by the human eye guarantee impeccable beauty. The President bracelet, with its semi-circular three piece links, was created in 1956 for the launch of the Oyster Perpetual Day-Date. It represents the ultimate in refinement and comfort and is always made of carefully selected precious metals.

More technical details

Day-Date

Reference 128345RBR

Model Case

Type

Oyster, 36 mm, Everose gold and diamonds

Diameter

36 mm

Material

Everose gold

Bezel

Set with diamonds

Oyster Architecture

Monobloc middle case, screw-down case back and winding crown

Winding Crown

Screw-down, Twinlock double waterproofness system

Crystal

Scratch-resistant sapphire, Cyclops lens over the date

Water Resistance

Waterproof to 100 metres / 330 feet

Movement

Type

Perpetual, mechanical, self-winding

Calibre

3255, Manufacture Rolex

Precision

-2/+2 sec/day, after casing

Oscillator

Paramagnetic blue Parachrom hairspring. High-performance Paraflex shock absorbers

Winding

Bidirectional self-winding via Perpetual rotor

Power reserve

Approximately 70 hours

Functions

Centre hour, minute and seconds hands. Instantaneous day and date in apertures, secure rapid-setting. Stop-seconds for exact time setting

Bracelet

Type

Diamond-set President

Clasp

Concealed folding Crownclasp

Bracelet Material

18 kt Everose gold

Dial

Type

Brown ombré

Certification

Type

Superlative Chronometer (COSC + Rolex certification after casing)

Explore and discover more on Rolex.com

All intellectual property rights such as trademarks, service marks, trade names, designs and copyrights are reserved.

Nothing contained in this website may be reproduced without written permission. Rolex reserves the right at all times to modify the models featured in the present website.

