



# Lady-Datejust

Oyster, 28 mm, Oystersteel and yellow gold

**This Oyster Perpetual  
Lady-Datejust in  
Oystersteel and yellow  
gold features a white  
mother-of-pearl,  
diamond-set dial and an  
Oyster bracelet.**



MOTHER-OF-PEARL DIAL

# Highlighting natural beauty

This dial features diamonds in 18 kt gold settings. Mother-of-pearl is by its nature full of mystery and surprises. Depending on its origin, it can be pink, white, black or yellow. It differs in colour, intensity and structure according to the part of the shell from which it is extracted.

At Rolex, mother-of-pearl is never artificially coloured. Instead, particular know-how and skill are devoted to simply highlighting its natural







## FLUTED BEZEL

# A Rolex signature

The Rolex fluted bezel is a mark of distinction. Originally, the fluting of the Oyster bezel had a functional purpose: it served to screw the bezel onto the case helping to ensure the waterproofness of the watch.

It was therefore identical to the fluting on the case back, which was also screwed onto the case for waterproofness, using specific Rolex tools. Over time, the fluting became an aesthetic element, a genuine Rolex signature feature. Today the fluted





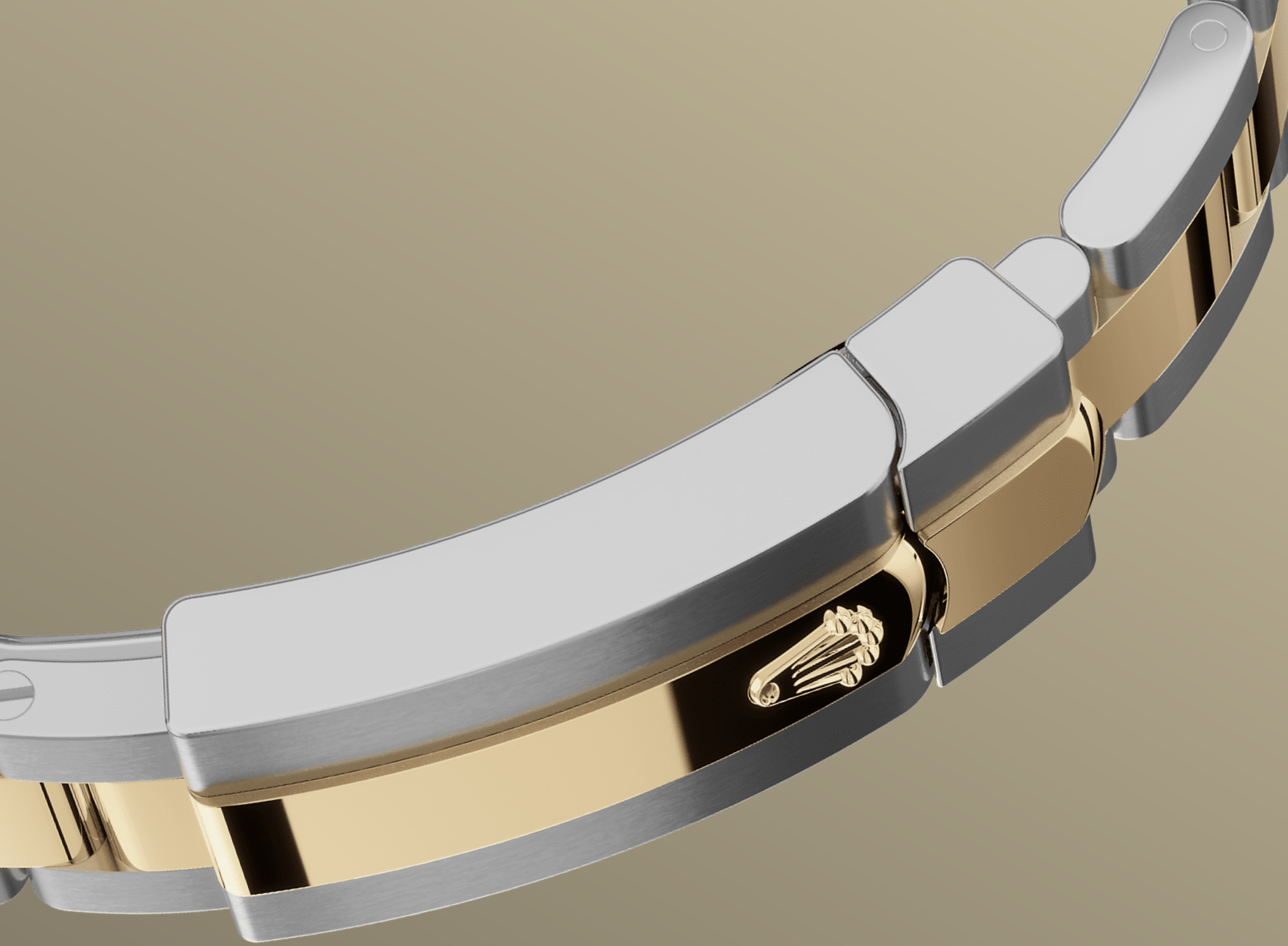
YELLOW ROLESOR

## A meeting of two metals

Gold is coveted for its lustre and nobility. Steel reinforces strength and reliability. Together, they harmoniously combine the best of their properties.

A true Rolex signature, Rolesor has featured on Rolex models since the early 1930s, and was trademarked as a name in 1933. It is one of the prominent pillars of the Oyster Perpetual collection.





THE OYSTER BRACELET

# Alchemy of form and function

The Oyster bracelet is a perfect alchemy of form and function, aesthetics and technology, designed to be both robust and comfortable.

It is equipped with an Oysterclasp and the Easylink comfort extension link, also exclusive to Rolex. This ingenious system allows the wearer to increase the bracelet length by approximately 5 mm, providing additional comfort in any circumstance.



# More technical details

## Lady-Datejust

Reference 279173

### Model Case

---

**Type**

Oyster, 28 mm, Oystersteel and yellow gold

**Diameter**

28 mm

**Material**

Yellow Rolesor

**Bezel**

Fluted

**Oyster Architecture**

Monobloc middle case, screw-down case back and winding crown

**Winding Crown**

Screw-down, Twinlock double waterproofness system

**Crystal**

Scratch-resistant sapphire, Cyclops lens over the date

**Water Resistance**

Waterproof to 100 metres / 330 feet

### Movement

---

**Type**

Perpetual, mechanical, self-winding

**Calibre**

2236, Manufacture Rolex

**Precision**

-2/+2 sec/day, after casing

**Oscillator**

Syloxi hairspring in silicon with patented geometry. High-performance Paraflex shock absorbers

**Winding**

Bidirectional self-winding via  
Perpetual rotor

**Power reserve**

Approximately 55 hours

**Functions**

Centre hour, minute and seconds  
hands. Instantaneous date with  
rapid setting. Stop-seconds for  
precise time setting

**Bracelet**

---

**Type**

Oyster, three-piece solid links

**Clasp**

Folding Oysterclasp with Easylink 5  
mm comfort extension link

**Bracelet Material**

Yellow Rolesor - combination of  
Oystersteel and yellow gold

**Dial**

---

**Type**

White mother-of-pearl set with  
diamonds

**Gem setting**

Diamonds in 18 kt gold settings

**Certification**

---

**Type**

Superlative Chronometer (COSC +  
Rolex certification after casing)

# Explore and discover more on Rolex.com

**All intellectual property rights such as trademarks, service marks, trade names, designs and copyrights are reserved.**

Nothing contained in this website may be reproduced without written permission. Rolex reserves the right at all times to modify the models featured in the present website.

