



# Lady-Datejust

Oyster, 28 mm, Oystersteel and white gold

**This Oyster Perpetual  
Lady-Datejust in  
Oystersteel and white  
gold features Pink dial  
and an Oyster bracelet.**



FLUTED BEZEL

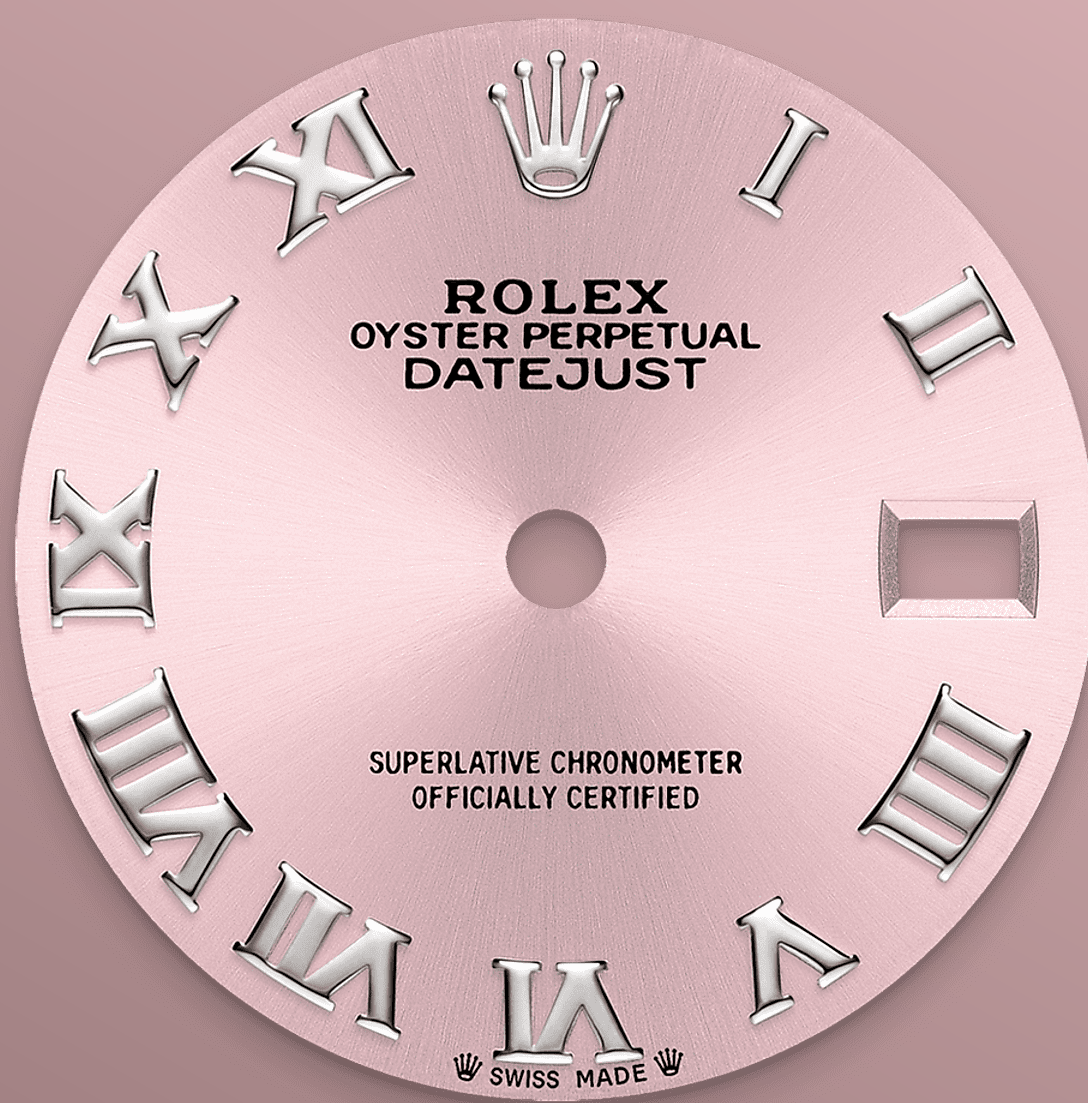
## A Rolex signature

The Rolex fluted bezel is a mark of distinction. Originally, the fluting of the Oyster bezel had a functional purpose: it served to screw the bezel onto the case helping to ensure the waterproofness of the watch.

It was therefore identical to the fluting on the case back, which was also screwed onto the case for waterproofness, using specific Rolex tools. Over time, the fluting became an aesthetic element, a genuine Rolex signature feature. Today the fluted







PINK DIAL

## A watchmaking technique

The sunray finish creates delicate light reflections on many dials in the Oyster Perpetual collection. It is obtained using masterful brushing techniques that create grooves running outwards from the centre of the dial.

Light is diffused consistently along each engraving, creating a characteristic subtle glow that moves depending on the position of the wrist. Once the sunray finish has been completed, the





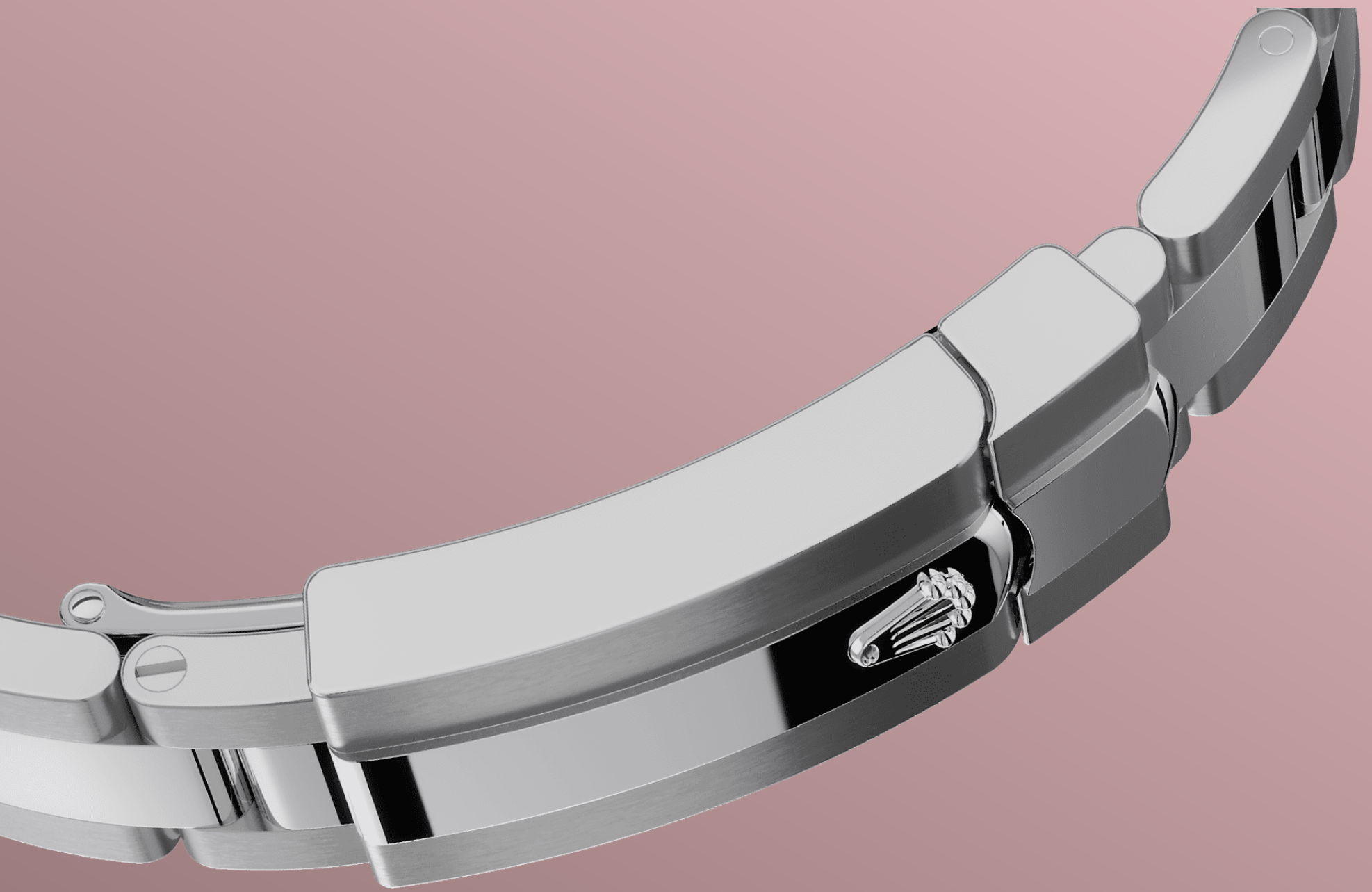
WHITE ROLESOR

## A meeting of two metals

Gold is coveted for its lustre and nobility. Steel reinforces strength and reliability. Together, they harmoniously combine the best of their properties.

A true Rolex signature, Rolesor has featured on Rolex models since the early 1930s, and was trademarked as a name in 1933. It is one of the prominent pillars of the Oyster collection.





THE OYSTER BRACELET

## Alchemy of form and function

The Oyster bracelet is a perfect alchemy of form and function, aesthetics and technology, designed to be both robust and comfortable.

It is equipped with an Oysterclasp and the Easylink comfort extension link, also exclusive to Rolex. This ingenious system allows the wearer to increase the bracelet length by approximately 5 mm, providing additional comfort in any circumstance.



# More technical details

## Lady-Datejust

Reference 279174

### Model Case

---

#### Type

Oyster, 28 mm, Oystersteel and white gold

#### Diameter

28 mm

#### Material

White Rolesor

#### Bezel

Fluted

#### Oyster Architecture

Monobloc middle case, screw-down case back and winding crown

#### Winding Crown

Screw-down, Twinlock double waterproofness system

#### Crystal

Scratch-resistant sapphire, Cyclops lens over the date

#### Water Resistance

Waterproof to 100 metres / 330 feet

### Movement

---

#### Type

Perpetual, mechanical, self-winding

#### Calibre

2236, Manufacture Rolex

#### Precision

-2/+2 sec/day, after casing

#### Oscillator

Syloxi hairspring in silicon with patented geometry. High-performance Paraflex shock absorbers

### **Winding**

Bidirectional self-winding via  
Perpetual rotor

### **Power reserve**

Approximately 55 hours

### **Functions**

Centre hour, minute and seconds  
hands. Instantaneous date with  
rapid setting. Stop-seconds for  
precise time setting

## **Bracelet**

---

### **Type**

Oyster, three-piece solid links

### **Clasp**

Folding Oysterclasp with Easylink 5  
mm comfort extension link

### **Bracelet Material**

Oystersteel

## **Dial**

---

### **Type**

Pink

## **Certification**

---

### **Type**

Superlative Chronometer (COSC +  
Rolex certification after casing)

# Explore and discover more on Rolex.com

**All intellectual property rights such as trademarks, service marks, trade names, designs and copyrights are reserved.**

Nothing contained in this website may be reproduced without written permission. Rolex reserves the right at all times to modify the models featured in the present website.

