



Lady-Datejust

Oyster, 28 mm, Oystersteel, white gold
and diamonds

**This Oyster Perpetual
Lady-Datejust in
Oystersteel and white
gold features a white
mother-of-pearl,
diamond-set dial and a
Jubilee bracelet.**



MOTHER-OF-PEARL DIAL

Highlighting natural beauty

This dial features diamonds in 18 kt gold settings. Mother-of-pearl is by its nature full of mystery and surprises. Depending on its origin, it can be pink, white, black or yellow. It differs in colour, intensity and structure according to the part of the shell from which it is extracted.

At Rolex, mother-of-pearl is never artificially coloured. Instead, particular know-how and skill are devoted to simply highlighting its natural



DIAMOND-SET BEZEL

A sparkling symphony

Gem-setters, like sculptors, finely carve the precious metal to hand-shape the seat in which each gemstone will be perfectly lodged. With the art and craft of a jeweller, the stone is placed and meticulously aligned with the others, then firmly secured in its gold or platinum setting.

Besides the intrinsic quality of the stones, several other criteria contribute to the beauty of Rolex gem-setting: the precise alignment of the height of the gems, their orientation and position, the regularity, strength and proportions of the setting

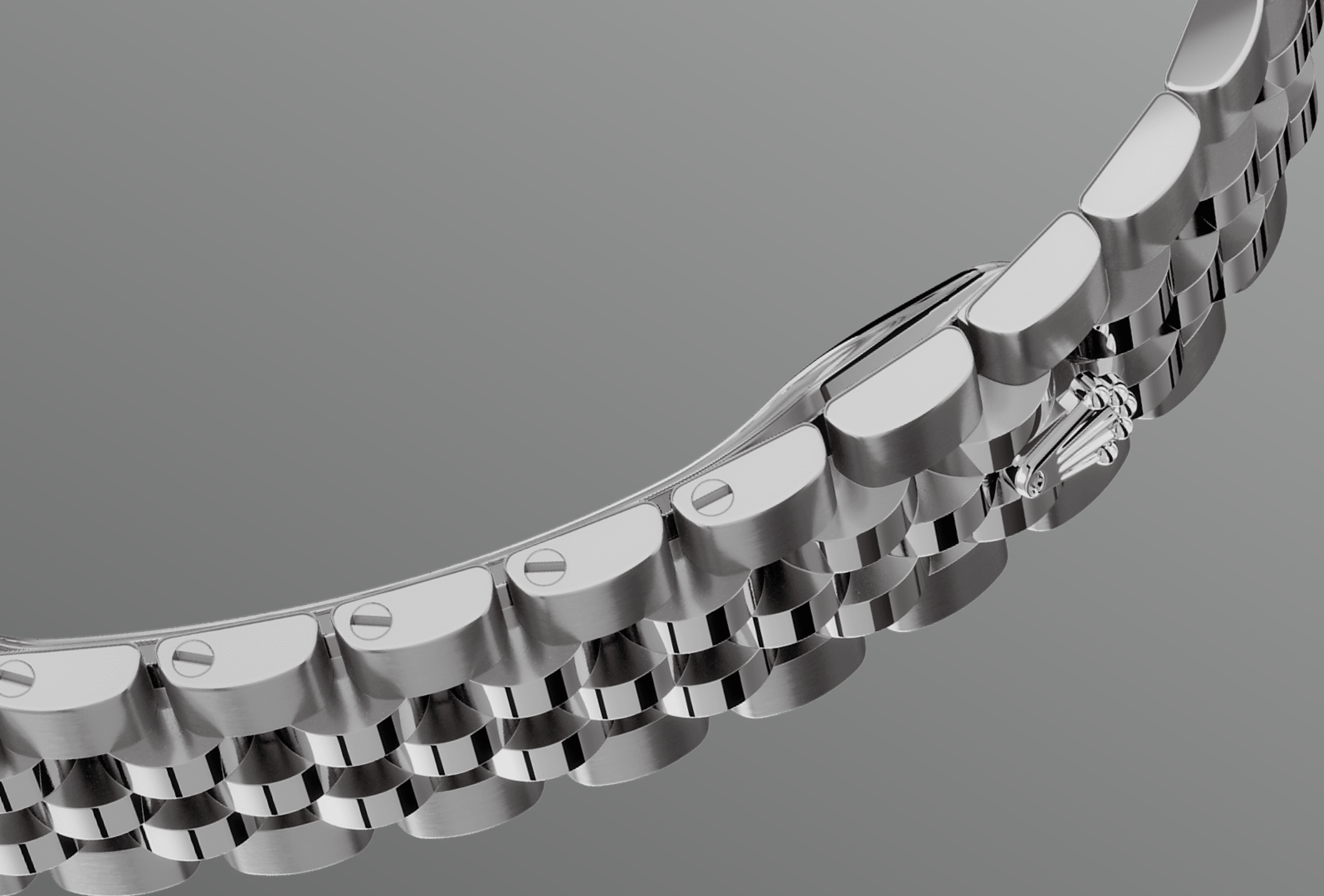


WHITE ROLESOR

A meeting of two metals

Gold is coveted for its lustre and nobility. Steel reinforces strength and reliability. Together, they harmoniously combine the best of their properties.

A true Rolex signature, Rolesor has featured on Rolex models since the early 1930s, and was trademarked as a name in 1933. It is one of the prominent pillars of the Oyster Perpetual collection.



THE JUBILEE BRACELET

Supple and comfortable

The design, development and production of Rolex bracelets and clasps, as well as the stringent tests they face, involve advanced high technology.

And, as with all the components of the watch, aesthetic controls by the human eye guarantee impeccable beauty. The Jubilee, a supple and comfortable five-piece link metal bracelet, was designed and made especially for the launch of the Oyster Perpetual Datejust in 1945.

More technical details

Lady-Datejust

Reference 279384RBR

Model Case

Type

Oyster, 28 mm, Oystersteel, white gold and diamonds

Diameter

28 mm

Material

White Rolesor

Bezel

Set with diamonds

Oyster Architecture

Monobloc middle case, screw-down case back and winding crown

Winding Crown

Screw-down, Twinlock double waterproofness system

Crystal

Scratch-resistant sapphire, Cyclops lens over the date

Water Resistance

Waterproof to 100 metres / 330 feet

Movement

Type

Perpetual, mechanical, self-winding

Calibre

2236, Manufacture Rolex

Precision

-2/+2 sec/day, after casing

Oscillator

Syloxi hairspring in silicon with patented geometry. High-performance Paraflex shock absorbers

Winding

Bidirectional self-winding via
Perpetual rotor

Power reserve

Approximately 55 hours

Functions

Centre hour, minute and seconds
hands. Instantaneous date with
rapid setting. Stop-seconds for
precise time setting

Bracelet

Type

Jubilee, five-piece links

Clasp

Concealed folding Crownclasp

Bracelet Material

Oystersteel

Dial

Type

White mother-of-pearl set with
diamonds

Gem setting

Diamonds in 18 kt gold settings

Certification

Type

Superlative Chronometer (COSC +
Rolex certification after casing)

Explore and discover more on Rolex.com

All intellectual property rights such as trademarks, service marks, trade names, designs and copyrights are reserved.

Nothing contained in this website may be reproduced without written permission. Rolex reserves the right at all times to modify the models featured in the present website.

