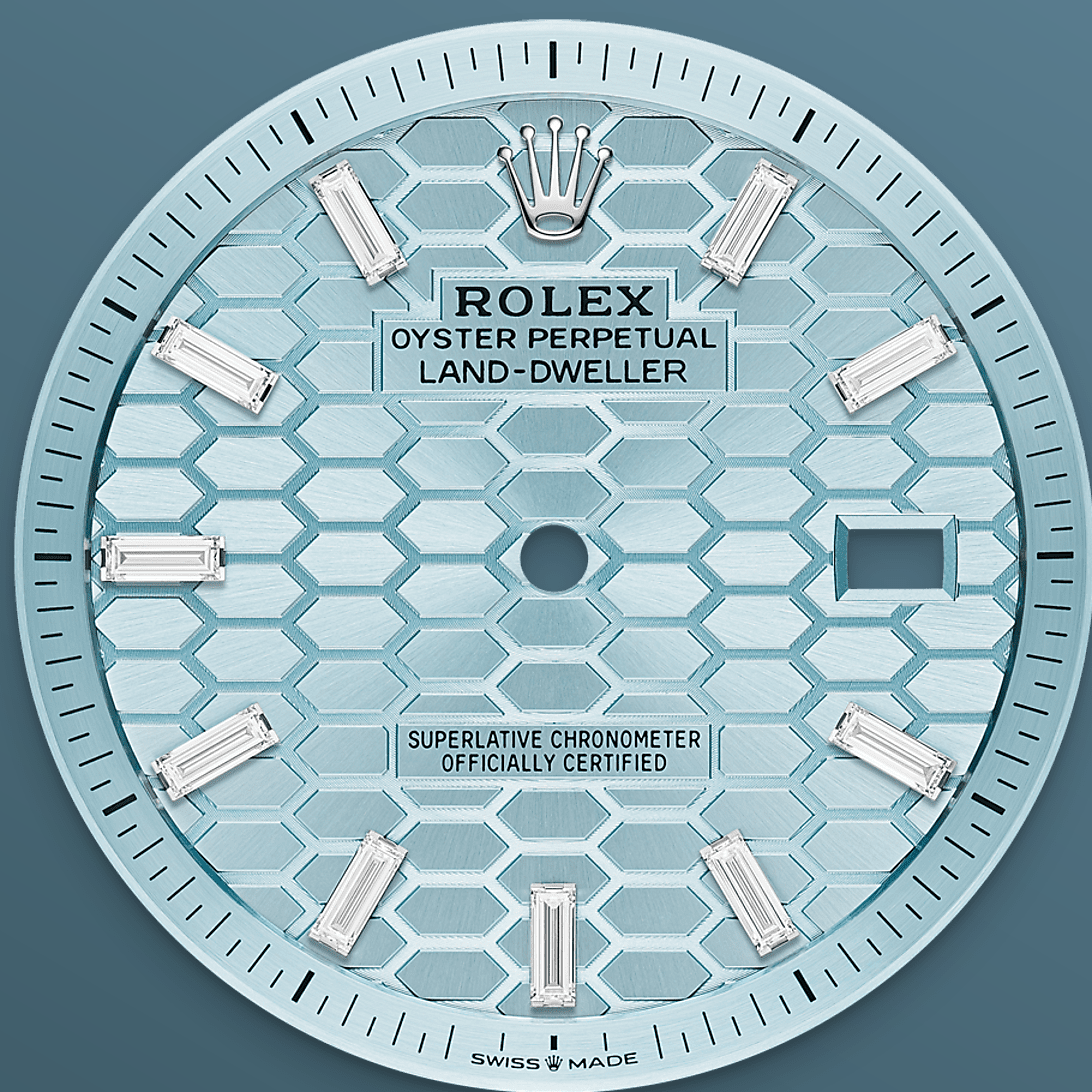




Land-Dweller 40

Oyster, 40 mm, platinum and diamonds

**The Land-Dweller 40 in
platinum with an ice-
blue honeycomb-motif,
diamond-set dial and
Flat Jubilee bracelet.**

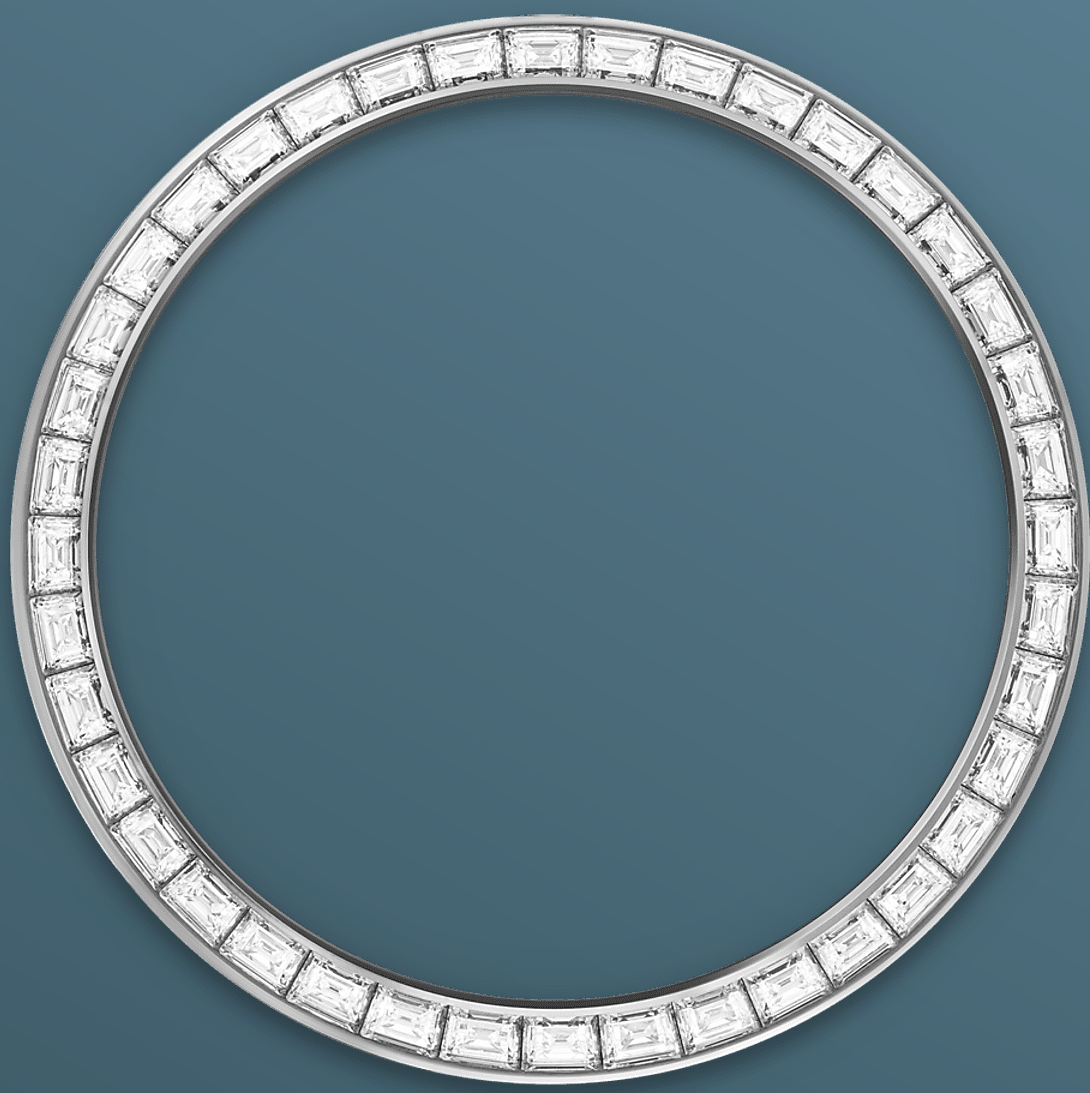


ICE-BLUE DIAL

Delicate lines

This ice blue – a colour reserved for watches made of platinum – dial is adorned with a honeycomb motif with a sunray finish. Its creation calls on traditional craftsmanship and high-technology methods, all mastered in-house.

The honeycomb structure is cut with a femtosecond laser, which is also used to etch the delicate lines in the grooves separating each cell. The dial is set with 10 baguette-cut diamonds to mark the hours.



DIAMOND-SET BEZEL

A sparkling symphony

Gem-setters, like sculptors, finely carve the precious metal to hand-shape the seat in which each gemstone will be perfectly lodged. With the art and craft of a jeweller, the stone is placed and meticulously aligned with the others, then firmly secured in its gold or platinum setting.

Besides the intrinsic quality of the stones, several other criteria contribute to the beauty of Rolex gem-setting: the precise alignment of the height of the gems, their orientation and position, the regularity, strength and proportions of the setting

as well as the intricate finishing of the metalwork.
A sparkling symphony to enhance the watch and
enchant the wearer.



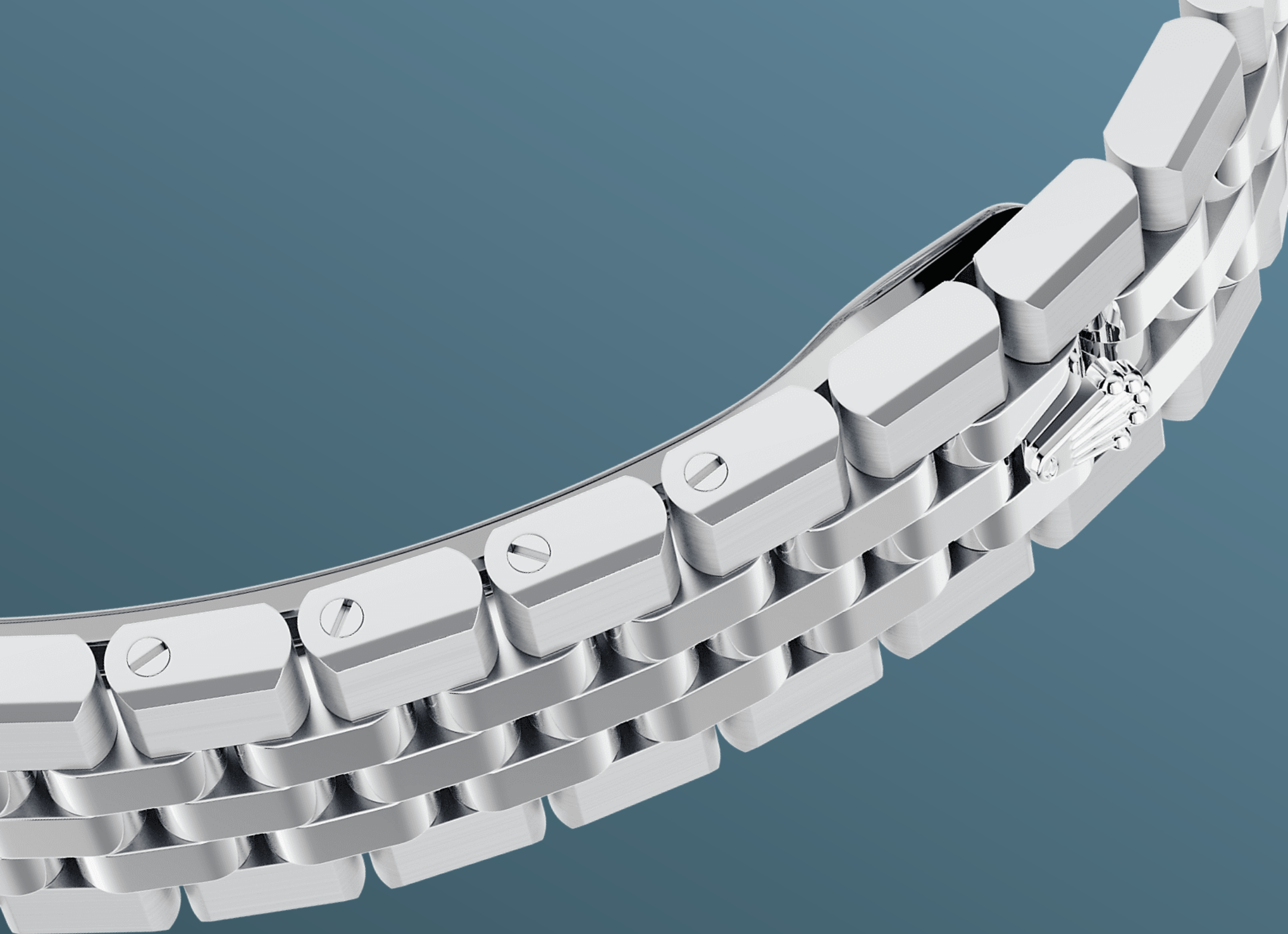
PLATINUM

The noblest of metals

Rare and precious, platinum is striking for its silvery whiteness and vibrant luminosity. It is among the densest and heaviest metals in the world, distinguished by unique chemical and physical properties such as exceptional corrosion resistance.

Paradoxically, it is also soft, elastic and highly malleable, which makes machining and polishing especially difficult, demanding an extremely high degree of skill. Rolex always uses 950 platinum, an alloy consisting of 950‰ (thousandths)

platinum, painstakingly crafted in-house by the fine metalworkers at Rolex. The noblest of metals for the finest of watches.



THE FLAT JUBILEE BRACELET

Seamless integrated design

Specially designed for this watch, the Flat Jubilee bracelet is a reinterpretation of the emblematic Jubilee bracelet. The Flat Jubilee differs in that all the links are flat, and it merges seamlessly with the Oyster case to form a balanced, harmonious whole, with the alternation of polished and technical satin finishings.

Moreover, the top edges of the bracelet's outer links are bevelled, as are those of the middle case,

and the resulting chamfers polished, creating the appearance of a continuous ribbon of light. It is equipped with a concealed folding Crownclasp.

More technical details

Land-Dweller

Reference 127386TBR

Model Case

Type

Oyster, 40 mm, platinum and diamonds

Diameter

40 mm

Material

Platinum

Bezel

Set with diamonds

Case Back

Transparent case back with anti-reflective coating

Oyster Architecture

Monobloc middle case, screw-down case back and winding crown

Winding Crown

Screw-down, Twinlock double waterproofness system

Crystal

Scratch-resistant sapphire, Cyclops lens over the date

Water Resistance

Waterproof to 100 metres / 330 feet

Movement

Type

Perpetual, mechanical, self-winding

Precision

-2/+2 sec/day, after casing

Calibre

7135, Manufacture Rolex

Oscillator

Syloxi hairspring in silicon with patented geometry. High-performance Paraflex shock absorbers

Winding

Bidirectional self-winding via Perpetual rotor

Power reserve

Approximately 66 hours

Functions

Centre hour, minute and seconds hands. Instantaneous date with rapid setting. Stop-seconds for precise time setting

Bracelet

Type

Flat Jubilee, five-piece solid links

Clasp

Concealed folding Crownclasp

Bracelet Material

Platinum

Dial

Type

Ice blue, honeycomb motif set with diamonds

Gem setting

10 baguette-cut diamonds

Certification

Type

Superlative Chronometer (COSC + Rolex certification after casing)

Explore and discover more on Rolex.com

All intellectual property rights such as trademarks, service marks, trade names, designs and copyrights are reserved.

Nothing contained in this website may be reproduced without written permission. Rolex reserves the right at all times to modify the models featured in the present website.

