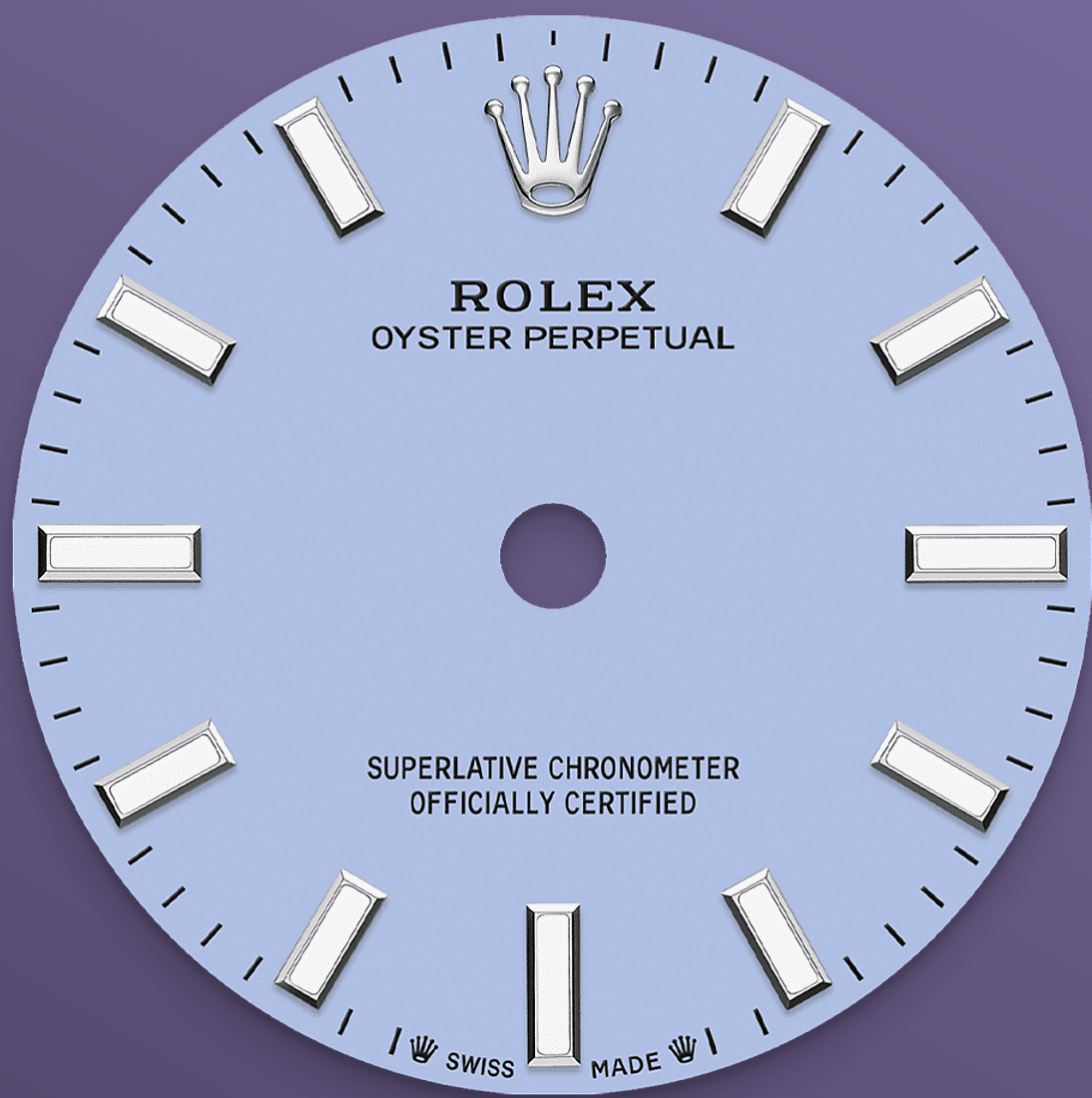




# Oyster Perpetual 28

Oyster, 28 mm, Oystersteel

**The Oyster Perpetual 28  
with a lavender dial and  
an Oyster bracelet.**



LAVENDER DIAL

## Craftsmanship rhymes with high technology

The colours created for the Oyster Perpetual range start life as a lacquer, which must be meticulously applied in a controlled-atmosphere environment to avoid dust and other contamination.

The brass plate of the dial base receives layer upon layer of lacquer, six in all, to form a regular, uniform surface. The last step is varnishing and polishing to bring out the full brilliance and depth

of colour. The various inscriptions are then pad printed, and the hour markers and crown riveted by hand. The dial, gleaming in its perfection, is all set to take its place on top of the movement at the watch assembly phase.



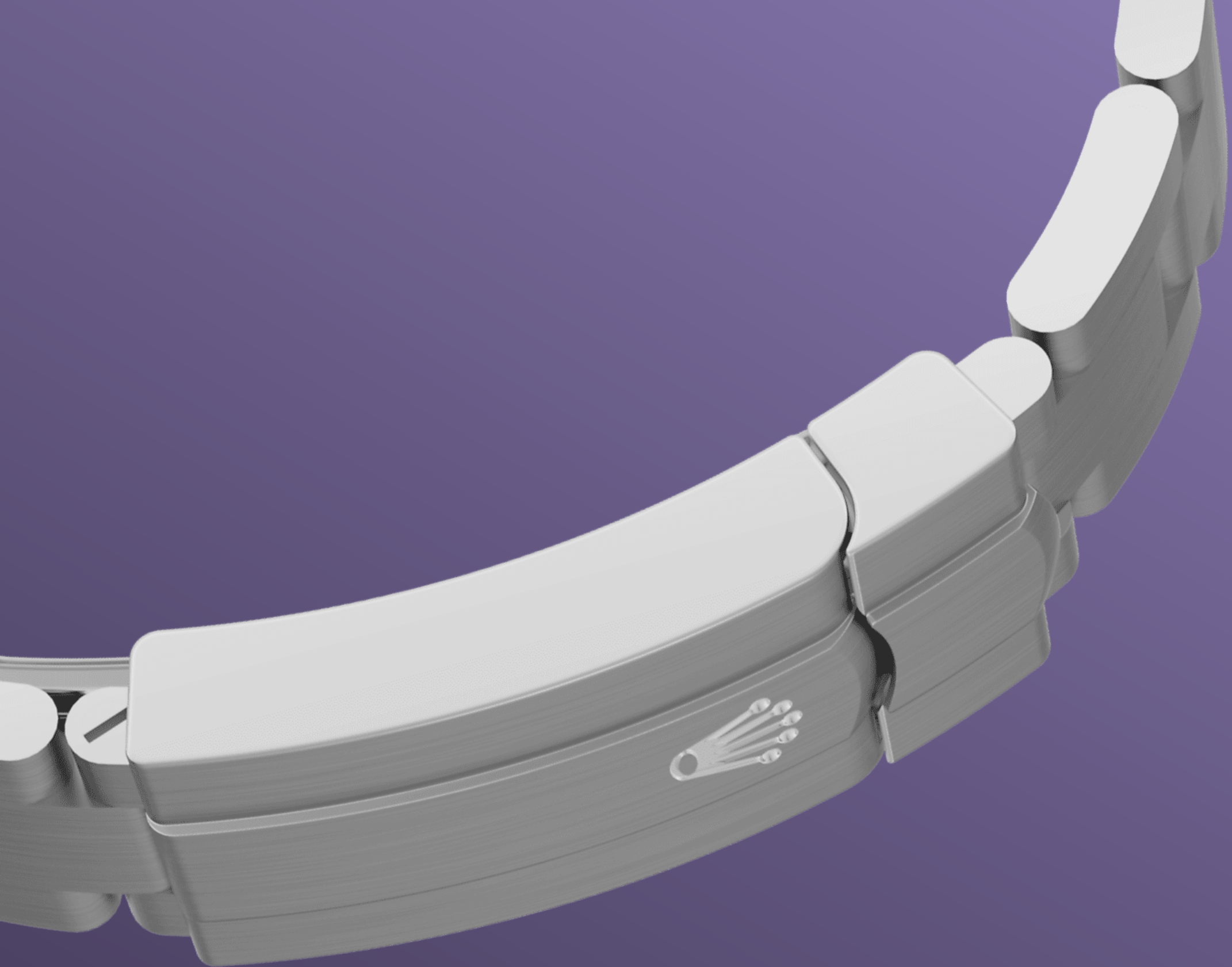


OYSTERSTEEL

## Highly resistant to corrosion

Rolex uses Oystersteel for its steel watch cases. Specially developed by the brand, Oystersteel belongs to the 904L steel family, alloys most commonly used in high-technology and in the aerospace and chemical industries, where maximum resistance to corrosion is essential.

Oystersteel is extremely resistant, offers an exceptional finish once polished and maintains its beauty even in the harshest environments.



THE OYSTER BRACELET

# Alchemy of form and function

The Oyster bracelet is a perfect alchemy of form and function, aesthetics and technology.

First introduced in the late 1930s, this particularly robust and comfortable metal bracelet with its broad, flat three-piece links remains the most universal bracelet in the Oyster collection. For the Oyster Perpetual models the Oyster bracelet is fitted with an Oysterclasp.





## 2232 MOVEMENT

# Superlative performance

Unveiled in 2020, calibre 2232 is a new-generation self-winding mechanical movement entirely developed and manufactured by Rolex. Fitted with a Syloxi hairspring in silicon, patented, it offers a superlative level of chronometric performance.

Insensitive to magnetic fields, the Syloxi hairspring provides great stability in the face of temperature variations and remains up to 10 times more

precise than a traditional hairspring in case of shocks. Its patented geometry ensures its regularity in any position.



# More technical details

## Oyster Perpetual

Reference 276200

### Model Case

---

**Type**

Oyster, 28 mm, Oystersteel

**Diameter**

28 mm

**Material**

Oystersteel

**Bezel**

Domed

**Oyster Architecture**

Monobloc middle case, screw-down case back and winding crown

**Winding Crown**

Screw-down, Twinlock double waterproofness system

**Crystal**

Scratch-resistant sapphire

**Water Resistance**

Waterproof to 100 metres / 330 feet

### Movement

---

**Type**

Perpetual, mechanical, self-winding

**Calibre**

2232, Manufacture Rolex

**Precision**

-2/+2 sec/day, after casing

**Oscillator**

Syloxi hairspring in silicon with patented geometry. High-performance Paraflex shock absorbers

**Winding**

Bidirectional self-winding via Perpetual rotor

**Power reserve**

Approximately 55 hours

**Functions**

Centre hour, minute and seconds hands. Stop-seconds for precise time setting

**Bracelet**

---

**Type**

Oyster, three-piece solid links

**Clasp**

Folding Oysterclasp with Easylink 5 mm comfort extension link

**Bracelet Material**

Oystersteel

**Dial**

---

**Type**

Lavender

**Details**

Highly legible Chromalight display with long-lasting blue luminescence

**Certification**

---

**Type**

Superlative Chronometer (COSC + Rolex certification after casing)

# Explore and discover more on Rolex.com

**All intellectual property rights such as trademarks, service marks, trade names, designs and copyrights are reserved.**

Nothing contained in this website may be reproduced without written permission. Rolex reserves the right at all times to modify the models featured in the present website.

