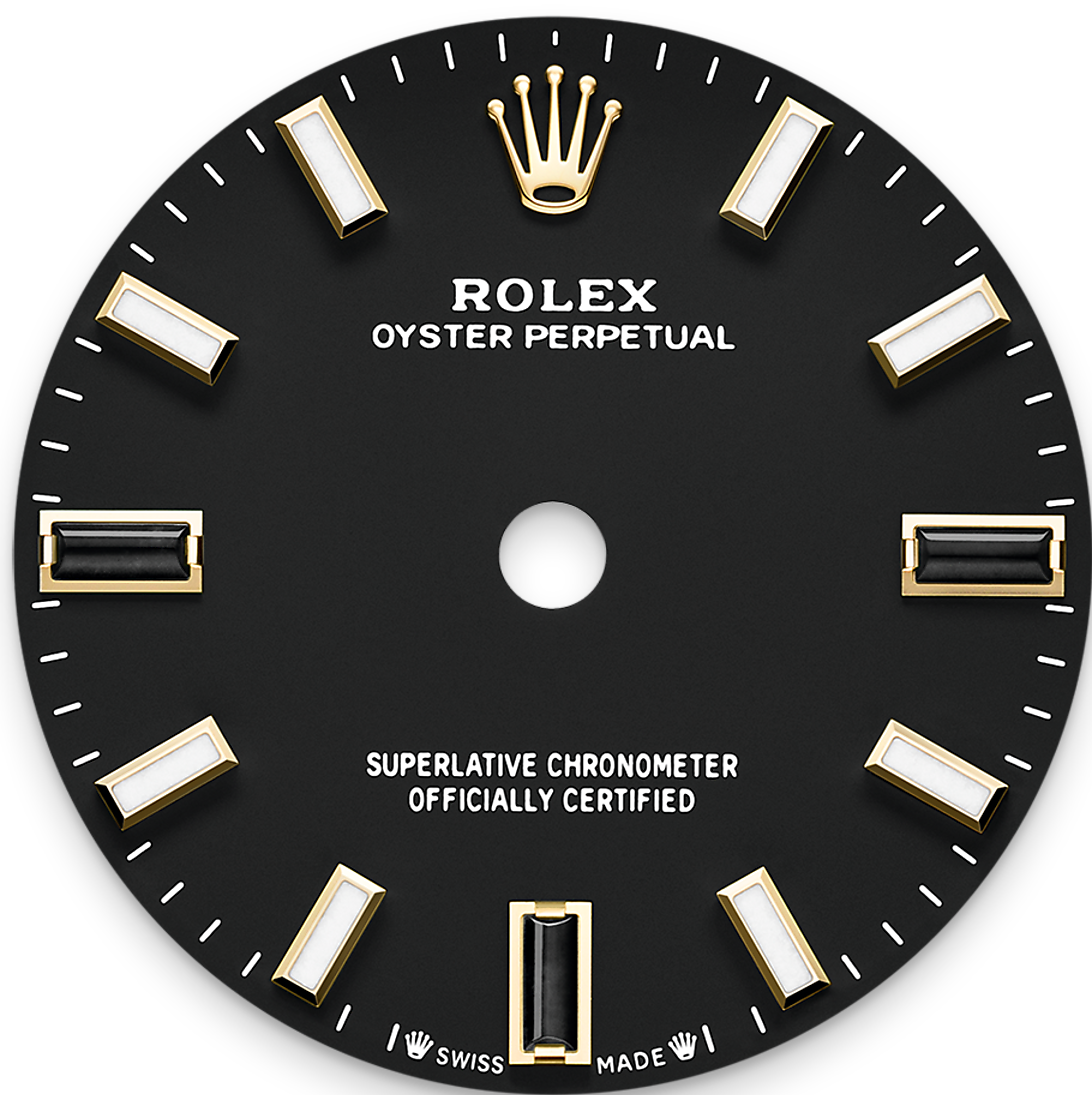




Oyster Perpetual 28

Oyster, 28 mm, yellow gold

**The Oyster Perpetual 28
in 18 kt yellow gold with
a black dial and an
Oyster bracelet.**



BLACK DIAL

Craftsmanship rhymes with high technology

This dial features hour markers in natural stone at 3, 6 and 9 o'clock. The colours created for the Oyster Perpetual range start life as a lacquer, which must be meticulously applied in a controlled-atmosphere environment to avoid dust and other contamination.

The brass plate of the dial base receives layer upon layer of lacquer, six in all, to form a regular, uniform surface. The last step is varnishing and

polishing to bring out the full brilliance and depth of colour. The various inscriptions are then pad printed, and the hour markers and crown riveted by hand. The dial, gleaming in its perfection, is all set to take its place on top of the movement at the watch assembly phase.



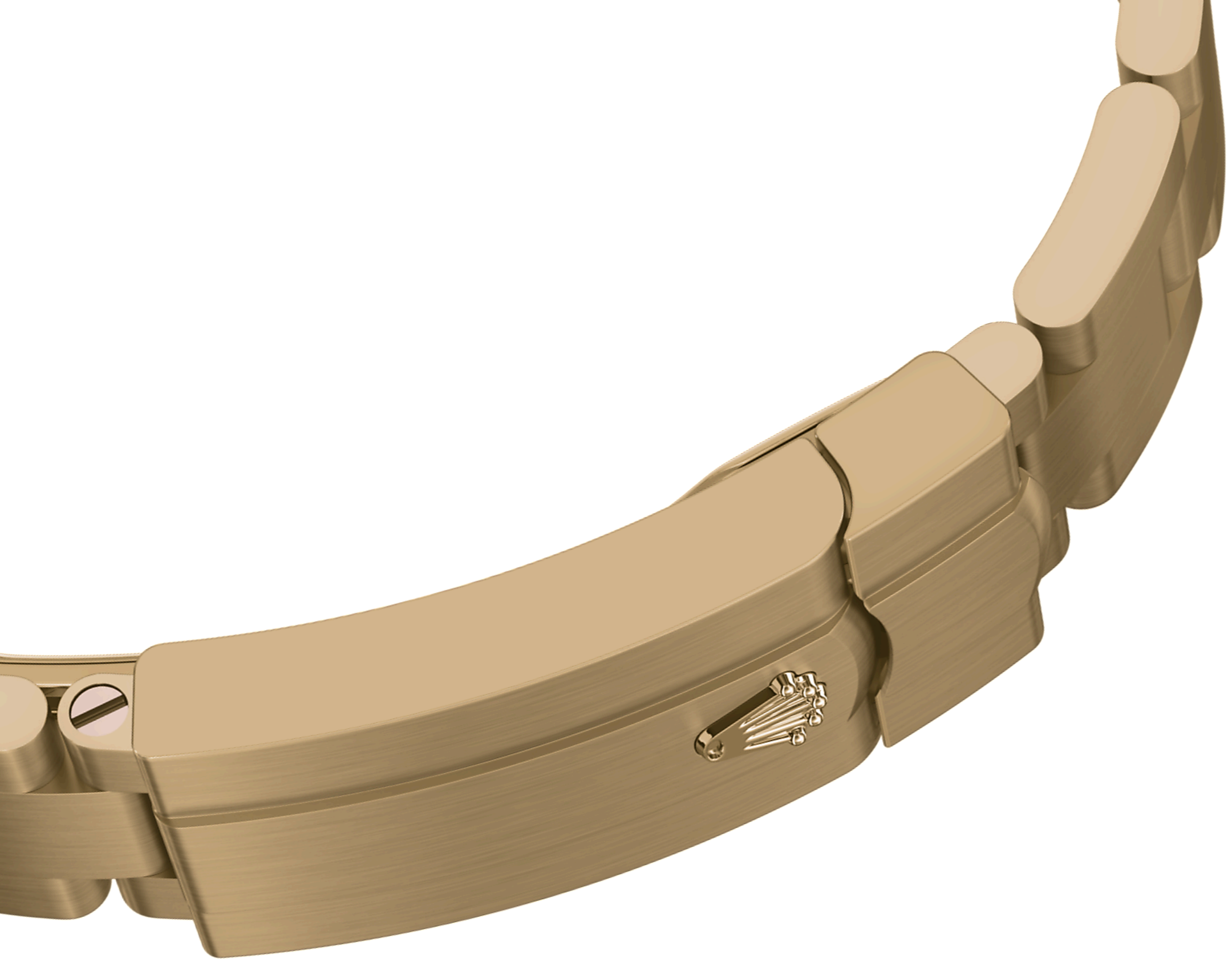
18 KT YELLOW GOLD

Commitment to excellence

By operating its own exclusive foundry, Rolex has the unrivalled ability to cast the highest quality 18 kt gold alloys. According to the proportion of silver, copper, platinum or palladium added, different types of 18 kt gold are obtained: yellow, pink or white.

They are made with only the purest metals and meticulously inspected in an in-house laboratory with state-of-the-art equipment, before the gold is

formed and shaped with the same painstaking attention to quality. Rolex's commitment to excellence begins at the source.



THE OYSTER BRACELET

Alchemy of form and function

The Oyster bracelet is a perfect alchemy of form and function, aesthetics and technology.

First introduced in the late 1930s, this particularly robust and comfortable metal bracelet with its broad, flat three-piece links remains the most universal bracelet in the Oyster collection. For the Oyster Perpetual models the Oyster bracelet is fitted with an Oysterclasp.



2232 MOVEMENT

Superlative performance

Unveiled in 2020, calibre 2232 is a new-generation self-winding mechanical movement entirely developed and manufactured by Rolex. Fitted with a Syloxi hairspring in silicon, patented, it offers a superlative level of chronometric performance.

Insensitive to magnetic fields, the Syloxi hairspring provides great stability in the face of temperature variations and remains up to 10 times more

precise than a traditional hairspring in case of shocks. Its patented geometry ensures its regularity in any position.

More technical details

Oyster Perpetual

Reference 276208

Model Case

Type

Oyster, 28 mm, yellow gold

Diameter

28 mm

Material

Yellow gold

Bezel

Domed

Oyster Architecture

Monobloc middle case, screw-down case back and winding crown

Winding Crown

Screw-down, Twinlock double waterproofness system

Crystal

Scratch-resistant sapphire

Water Resistance

Waterproof to 100 metres / 330 feet

Movement

Type

Perpetual, mechanical, self-winding

Calibre

2232, Manufacture Rolex

Precision

-2/+2 sec/day, after casing

Oscillator

Syloxi hairspring in silicon with patented geometry. High-performance Paraflex shock absorbers

Winding

Bidirectional self-winding via Perpetual rotor

Power reserve

Approximately 55 hours

Functions

Centre hour, minute and seconds hands. Stop-seconds for precise time setting

Bracelet

Type

Oyster, three-piece solid links

Clasp

Folding Oysterclasp with Easylink 5 mm comfort extension link

Bracelet Material

18 kt yellow gold

Dial

Type

Black

Details

Highly legible Chromalight display with long-lasting blue luminescence

Certification

Type

Superlative Chronometer (official chronometer certification + Rolex certification after casing)

Explore and discover more on Rolex.com

All intellectual property rights such as trademarks, service marks, trade names, designs and copyrights are reserved.

Nothing contained in this website may be reproduced without written permission. Rolex reserves the right at all times to modify the models featured in the present website.

