

Sea-Dweller

Oyster, 43 mm, Oystersteel

**The Oyster Perpetual
Sea-Dweller in
Oystersteel with a
Cerachrom bezel insert
in black ceramic and an
Oyster bracelet.**



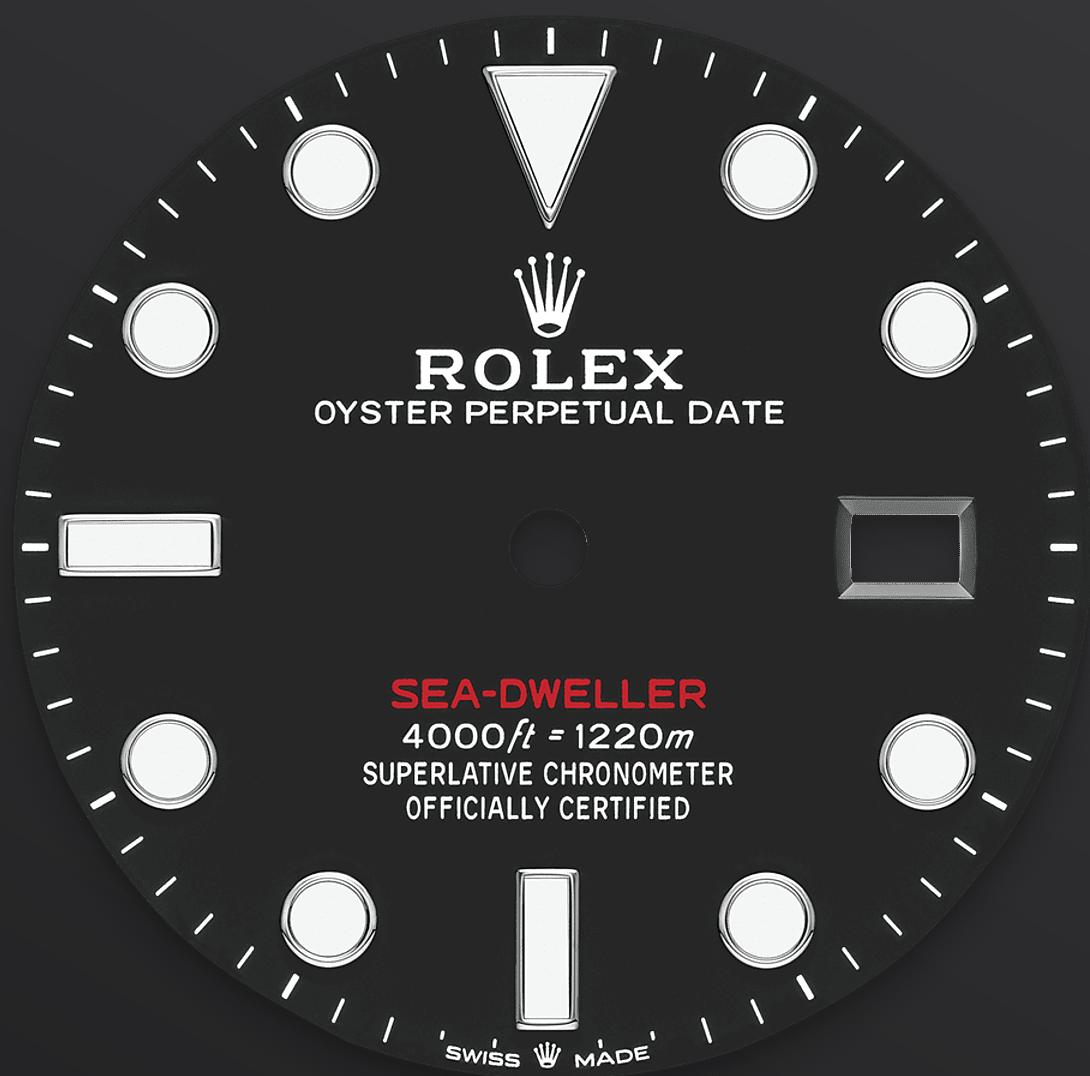
CERAMIC BEZEL AND LUMINESCENT DISPLAY

Legendary divers' watch

The 60-minute graduated, unidirectional rotatable bezel of the Sea-Dweller enables divers to precisely and safely monitor their dive and decompression times.

It is equipped with a patented black Cerachrom bezel insert manufactured by Rolex in a virtually scratchproof ceramic whose colour is unaffected by ultraviolet rays. The graduation is coated via PVD (Physical Vapour Deposition) with a thin layer of platinum. The dial features large Chromalight hour markers and hands, filled with luminescent

material that emits a long-lasting blue glow for excellent legibility in dark conditions.



INTENSE BLACK DIAL

Inspired by the original

The black dial of the Sea-Dweller has the large hands and indices reserved for Rolex professional models. The dial bears the name Sea-Dweller in red, a reference to the first model.

The innovative Chromalight display on the dial pushes back the boundaries of visibility in dark environments. Its distinctive blue glow lasts up to eight hours with a uniform luminosity, practically twice as long as that of standard luminescent materials.

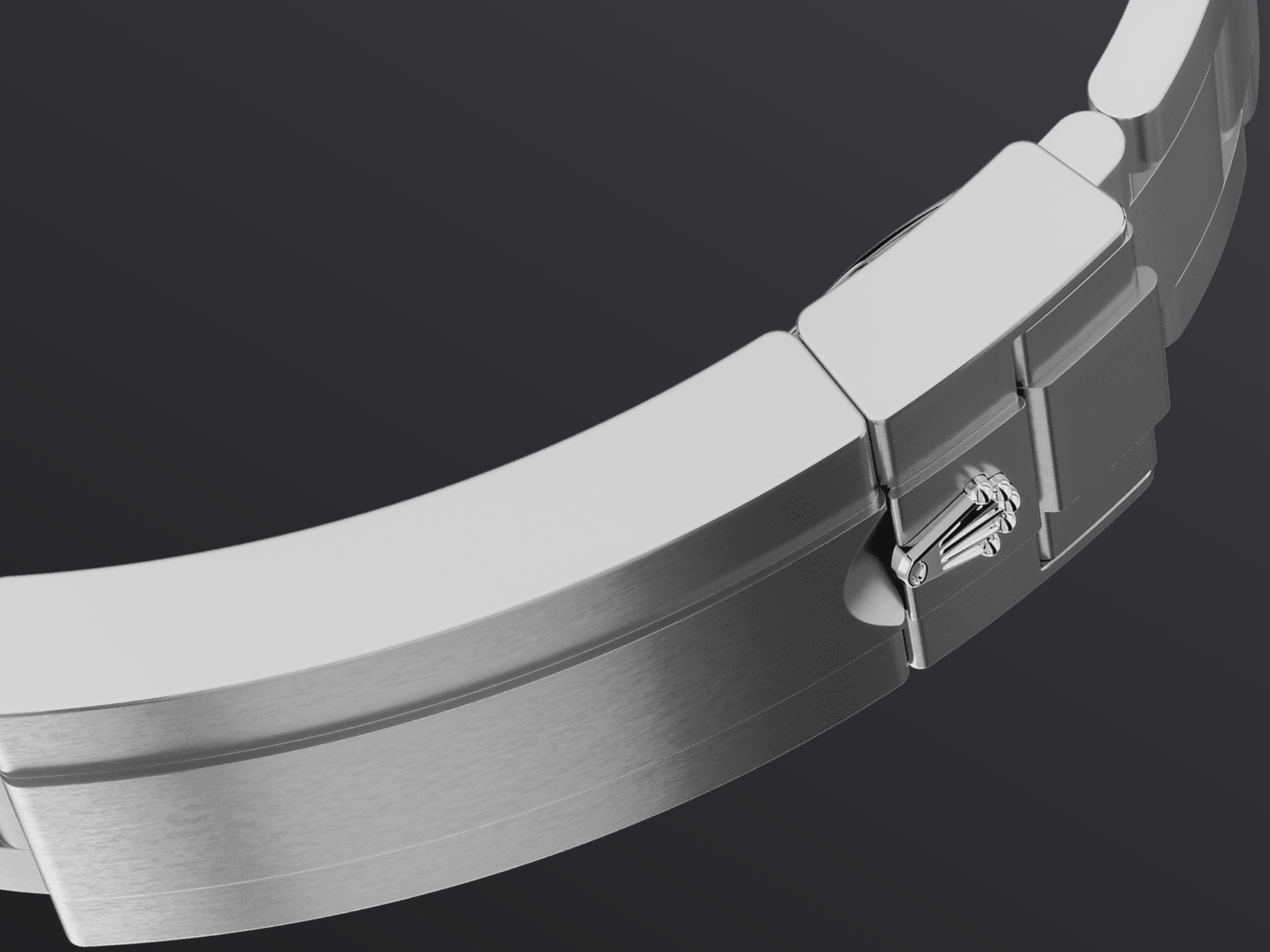


OYSTERSTEEL

Highly resistant to **corrosion**

Rolex uses Oystersteel for its steel watch cases. Specially developed by the brand, Oystersteel belongs to the 904L steel family, alloys most commonly used in high-technology and in the aerospace and chemical industries, where maximum resistance to corrosion is essential.

Oystersteel is extremely resistant, offers an exceptional finish once polished and maintains its beauty even in the harshest environments.



THE OYSTER BRACELET

Alchemy of form and function

The Oyster bracelet is a perfect alchemy of form and function, aesthetics and technology, designed to be both robust and comfortable.

It is equipped with an Oysterlock clasp, which prevents accidental opening, and an ingenious Glidelock, allowing fine adjustments of the bracelet without using any tools — and allowing it to be worn comfortably over a diving suit.

More technical details

Sea-Dweller

Reference 126600

Model Case

Type

Oyster, 43 mm, Oystersteel

Diameter

43 mm

Material

Oystersteel

Bezel

Unidirectional rotatable 60-minute graduated, scratch-resistant Cerachrom insert in black ceramic, numerals and graduations coated in platinum

Oyster Architecture

Monobloc middle case, screw-down case back and winding crown

Winding Crown

Screw-down, Triplock triple waterproofness system

Crystal

Scratch-resistant sapphire, Cyclops lens over the date

Water Resistance

Waterproof to 1,220 metres / 4,000 feet, helium escape valve

Movement

Type

Perpetual, mechanical, self-winding

Calibre

3235, Manufacture Rolex

Precision

-2/+2 sec/day, after casing

Oscillator

Paramagnetic blue Parachrom hairspring. High-performance Paraflex shock absorbers

Winding

Bidirectional self-winding via Perpetual rotor

Power reserve

Approximately 70 hours

Functions

Centre hour, minute and seconds hands. Instantaneous date with rapid setting. Stop-seconds for precise time setting

Bracelet

Type

Oyster, three-piece solid links

Clasp

Folding Oysterlock safety clasp with Rolex Glidelock extension system

Bracelet Material

Oystersteel

Dial

Type

Intense black

Details

Highly legible Chromalight display with long-lasting blue luminescence

Certification

Type

Superlative Chronometer (COSC + Rolex certification after casing)

Explore and discover more on Rolex.com

All intellectual property rights such as trademarks, service marks, trade names, designs and copyrights are reserved.

Nothing contained in this website may be reproduced without written permission. Rolex reserves the right at all times to modify the models featured in the present website.

