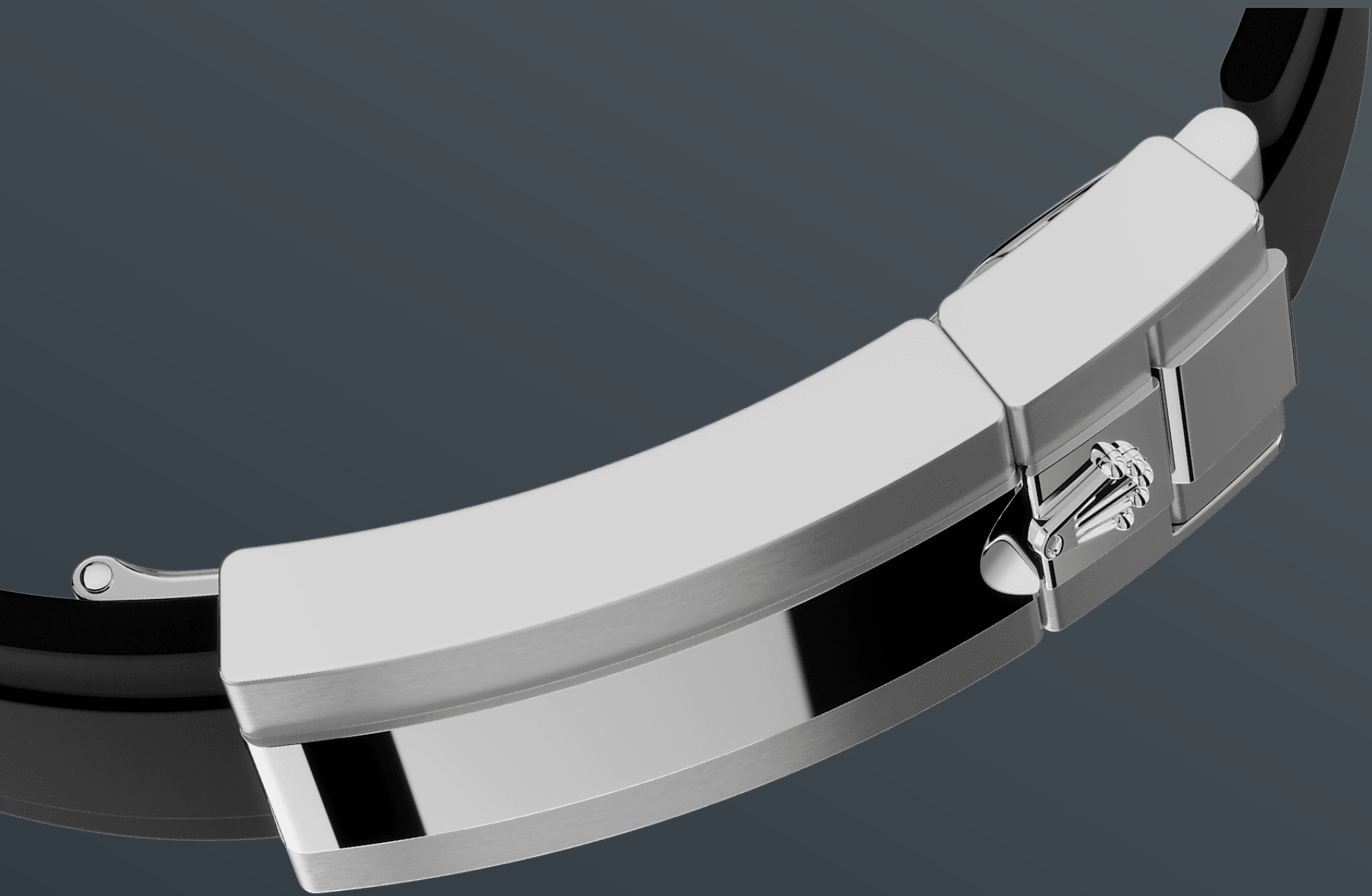




# Yacht-Master 42

Oyster, 42 mm, white gold

**The Oyster Perpetual  
Yacht-Master 42 in 18 kt  
white gold with a  
falcon's eye dial and an  
Oysterflex bracelet.**



THE OYSTERFLEX BRACELET

## Highly resistant and durable

The Yacht-Master's new Oysterflex bracelet, developed by Rolex and patented, offers a sporty alternative to metal bracelets. The bracelet attaches to the watch case and the Oysterlock safety clasp by a flexible titanium and nickel alloy metal blade.

The blade is overmoulded with high-performance black elastomer which is particularly resistant to environmental effects, very durable and perfectly

inert for the wearer of the watch. For enhanced comfort, the inside of the Oysterflex bracelet is equipped with a patented longitudinal cushion system that stabilizes the watch on the wrist and fitted with an 18 kt white gold Oysterlock safety clasp. It also features the Rolex Glidelock extension system, designed by the brand and patented. This inventive toothed mechanism, integrated beneath the clasp, allows fine adjustment of the bracelet length by some 15 mm in increments of approximately 2.5 mm, without the use of tools.



18 KT WHITE GOLD

## Commitment to **excellence**

By operating its own exclusive foundry, Rolex has the unrivalled ability to cast the highest quality 18 kt gold alloys. According to the proportion of silver, copper, platinum or palladium added, different types of 18 kt gold are obtained: yellow, pink or white.

They are made with only the purest metals and meticulously inspected in an in-house laboratory with state-of-the-art equipment, before the gold is

formed and shaped with the same painstaking attention to quality. Rolex's commitment to excellence begins at the source.



FALCON'S EYE DIAL

## Exceptional legibility

Like all Rolex Professional watches, the Yacht-Master 42 offers exceptional legibility in all circumstances, and especially in the dark, thanks to its Chromalight display.

The broad hands and hour markers in simple shapes – triangles, circles, rectangles – are filled with a luminescent material emitting a long-lasting glow.



BIDIRECTIONAL ROTATABLE BEZEL

## Timing the distance

The Yacht-Master's bidirectional rotatable 60-minute graduated bezel is made entirely from precious metals or fitted with a Cerachrom insert in high-tech ceramic. The raised polished numerals and graduations stand out clearly against a matt, sand-blasted background.

This functional bezel – which allows the wearer to calculate, for example, the sailing time between two buoys – is also a key component in the model's distinctive visual identity.



# More technical details

## Yacht-Master

Reference 226659

### Model Case

---

#### Type

Oyster, 42 mm, white gold

#### Diameter

42 mm

#### Material

White gold

#### Bezel

Bidirectional rotatable 60-minute graduated bezel with matt black Cerachrom insert in ceramic, polished raised numerals and graduations

#### Oyster Architecture

Monobloc middle case, screw-down case back and winding crown

#### Winding Crown

Screw-down, Triplock triple waterproofness system

#### Crystal

Scratch-resistant sapphire, Cyclops lens over the date

#### Water Resistance

Waterproof to 100 metres / 330 feet

### Movement

---

#### Type

Perpetual, mechanical, self-winding

#### Calibre

3235, Manufacture Rolex

#### Precision

-2/+2 sec/day, after casing

#### Oscillator

Paramagnetic blue Parachrom hairspring. High-performance Paraflex shock absorbers

#### Winding

Bidirectional self-winding via Perpetual rotor

**Power reserve**

Approximately 70 hours

**Functions**

Centre hour, minute and seconds hands. Instantaneous date with rapid setting. Stop-seconds for precise time setting

## Bracelet

---

**Type**

Oysterflex

**Clasp**

Folding Oysterlock safety clasp with Rolex Glidelock extension system

**Bracelet Material**

Flexible metal blades overmoulded with high-performance elastomer

## Dial

---

**Type**

Falcon's eye

**Details**

Highly legible Chromalight display with long-lasting blue luminescence

## Certification

---

**Type**

Superlative Chronometer (COSC + Rolex certification after casing)

# Explore and discover more on Rolex.com

**All intellectual property rights such as trademarks, service marks, trade names, designs and copyrights are reserved.**

Nothing contained in this website may be reproduced without written permission. Rolex reserves the right at all times to modify the models featured in the present website.

