



Explorer 36

Oyster, 36 mm, Oystersteel and yellow gold

**The Oyster Perpetual
Explorer 36 in
Oystersteel and yellow
gold features a
distinctive black dial
with characteristic 3, 6,
and 9 numerals with a
Chromalight display.**



BLACK DIAL

Optimal legibility in any situation

The dial is the distinctive face of a Rolex watch, the feature most responsible for its identity and readability. The Explorer model's characteristic 3, 6 and 9 numerals are filled with a luminescent material emitting a long-lasting blue glow, like the hour markers and hands.

Like all Rolex timepieces, the Explorer 36's dial is designed and manufactured in-house, largely by hand to ensure perfection.



SMOOTH BEZEL

An established icon

The Oyster Perpetual Explorer 36 imparts a fresh elan to the sober, clean lines that have long established it as an icon.

The smooth bezel in yellow gold is robust yet elegant, and in perfect harmony with the Explorer's iconic heritage.

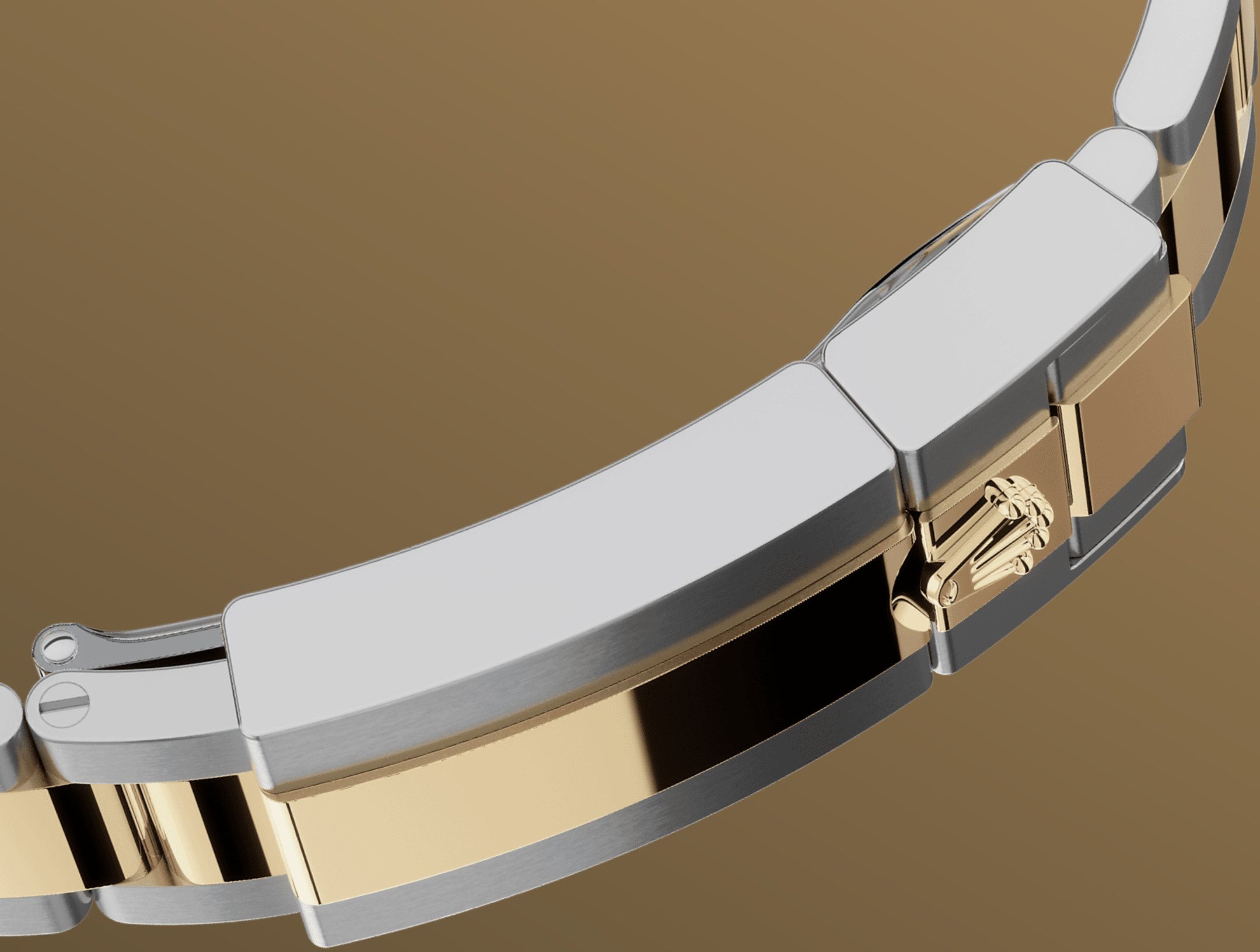


YELLOW ROLESOR

A meeting of two metals

Gold is coveted for its lustre and nobility. Steel reinforces strength and reliability. Together, they harmoniously combine the best of their properties.

A true Rolex signature, Rolesor has featured on Rolex models since the early 1930s, and was trademarked as a name in 1933. It is one of the prominent pillars of the Oyster Perpetual collection.



THE OYSTER BRACELET

Alchemy of form and function

The Oyster bracelet is a perfect alchemy of form and function, aesthetics and technology, designed to be both robust and comfortable. It is equipped with an Oysterlock folding clasp, which prevents accidental opening and the Easylink comfort extension link, also exclusive to Rolex.

This ingenious system allows the wearer to increase the bracelet length by approximately 5

More Explorer technical details

Reference 124273

Model Case

Type

Oyster, 36 mm, Oystersteel and yellow gold

Diameter

36 mm

Material

Yellow Rolesor

Bezel

Smooth

Oyster Architecture

Monobloc middle case, screw-down case back and winding crown

Winding Crown

Screw-down, Twinlock double waterproofness system

Crystal

Scratch-resistant sapphire

Water Resistance

Waterproof to 100 metres / 330 feet

Movement

Type

Perpetual, mechanical, self-winding

Calibre

3230, Manufacture Rolex

Precision

-2/+2 sec/day, after casing

Oscillator

Paramagnetic blue Parachrom hairspring. High-performance Paraflex shock absorbers

Winding

Bidirectional self-winding via Perpetual rotor

Power reserve

Approximately 70 hours

Functions

Centre hour, minute and seconds hands. Stop-seconds for precise time setting

Bracelet

Type

Oyster, three-piece solid links

Clasp

Folding Oysterlock safety clasp with Easylink 5 mm comfort extension link

Bracelet Material

Yellow Rolesor - combination of Oystersteel and yellow gold

Dial

Type

Black

Details

Highly legible Chromalight display with long-lasting blue luminescence

Certification

Type

Superlative Chronometer (COSC + Rolex certification after casing)

Explore and discover more on Rolex.com

All intellectual property rights such as trademarks, service marks, trade names, designs and copyrights are reserved.

Nothing contained in this website may be reproduced without written permission. Rolex reserves the right at all times to modify the models featured in the present website.

