



# GMT-Master II

Oyster, 40 mm, white gold

**The Oyster Perpetual  
GMT-Master II in 18 ct  
white gold with a green  
ceramic dial and an  
Oyster bracelet.**



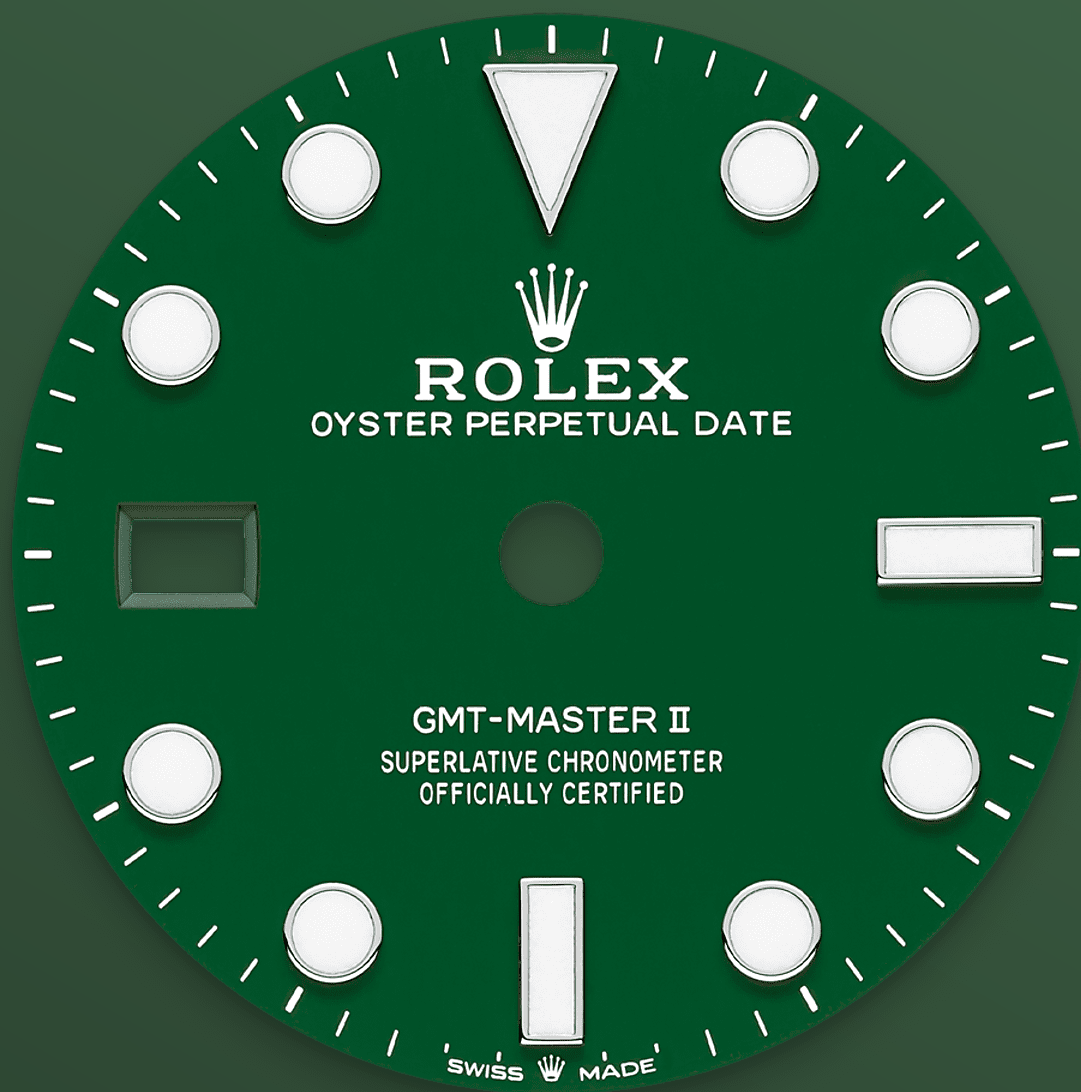
24-HOUR ROTATABLE BEZEL

## Innovative high- technology

This model features a green ceramic dial and a two-colour Cerachrom bezel insert in green and black ceramic. In addition to conventional hour, minute and seconds hands, the GMT-Master II features an arrow-tipped hand, which circles the dial once every 24 hours, as well as a bidirectional rotatable 24-hour graduated bezel.

The distinctively coloured 24-hour hand displays the “home” reference time in a first time zone

which can be read on the graduations on the bezel. The traveller's local time is easily set by "jumping" from hour to hour, thanks to an ingenious mechanism operated via the winding crown: the hour hand can be adjusted forwards or backwards independently of the minute and seconds hands. This allows travellers to adapt to their new time zone without affecting the precision of their timekeeping. The Cerachrom bezel insert features an original colour combination: black and an exclusive green that is reserved for this model.

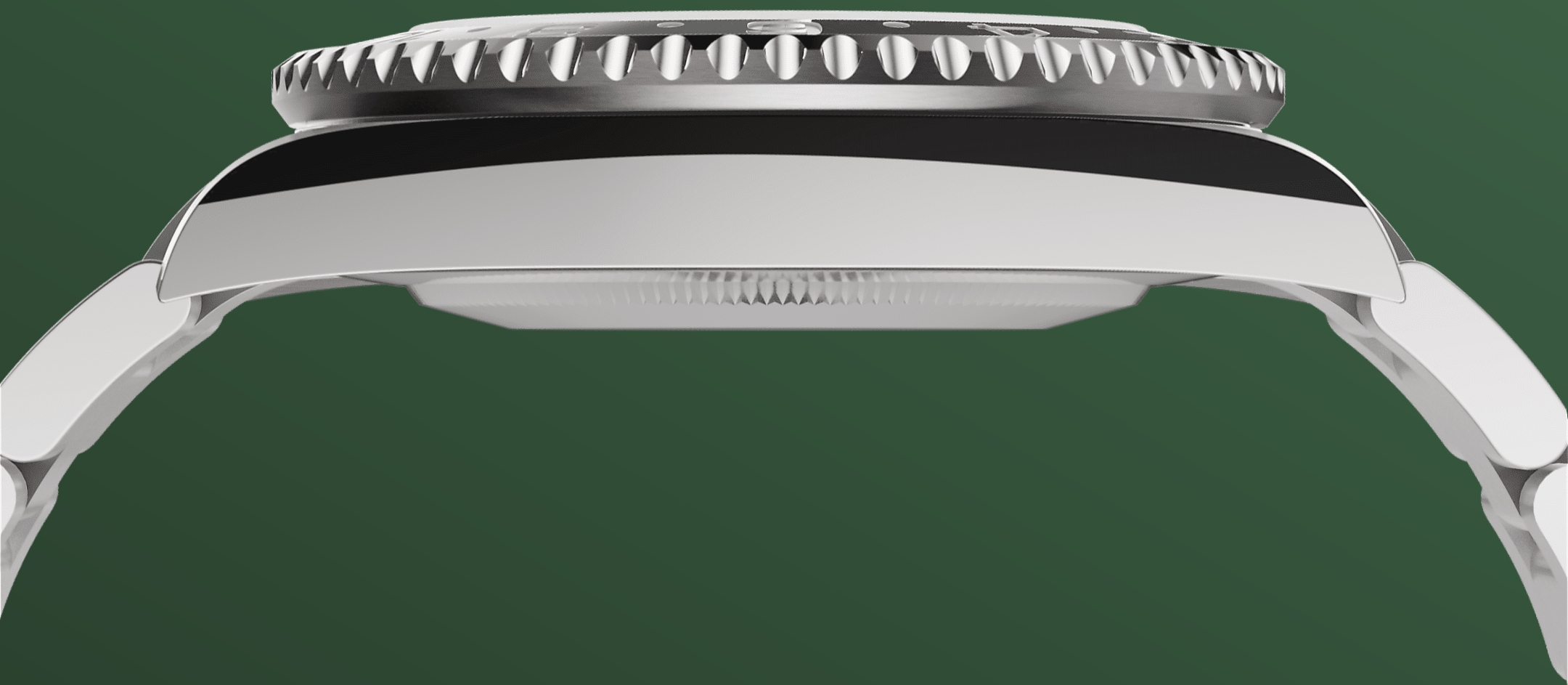


GREEN CERAMIC DIAL

## High-technology manufacturing

The Cerachrom dial – created in the same way as dials in natural stone, by fitting a disc of material onto a brass plate – displays the same shade of green as the lower half of the two-colour green and black Cerachrom bezel insert that frames the watch face. It is the first Cerachrom dial on a Rolex watch.

On this watch, the crown and crown guard are on the left side of the watch case. The date aperture and the Cyclops lens are at 9 o'clock.



18 CT WHITE GOLD

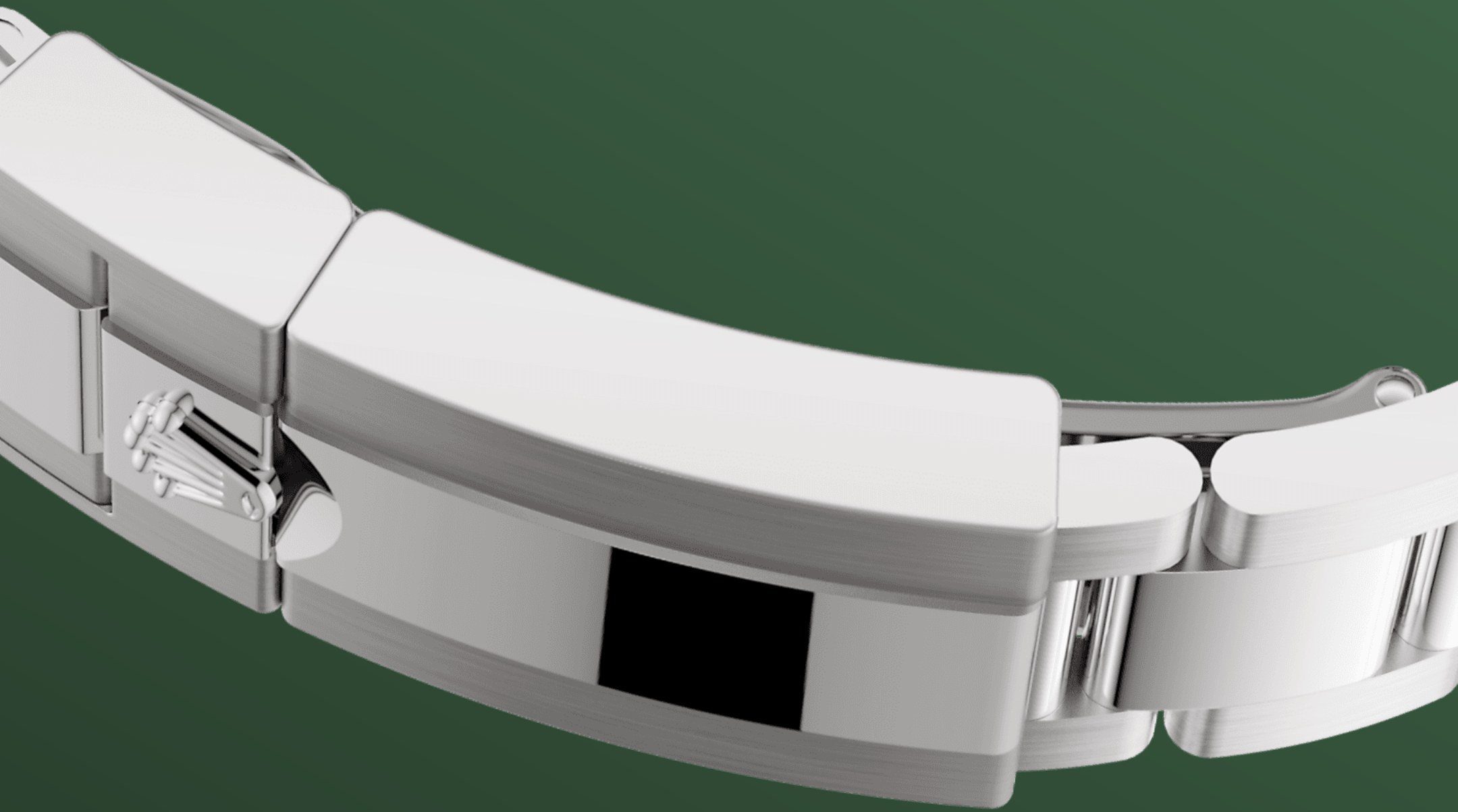
## Commitment to excellence

By operating its own exclusive foundry, Rolex has the unrivalled ability to cast the highest quality 18 ct gold alloys. According to the proportion of silver, copper, platinum or palladium added, different types of 18 ct gold are obtained: yellow, pink or white.

They are made with only the purest metals and meticulously inspected in an in-house laboratory with state-of-the-art equipment, before the gold is

formed and shaped with the same painstaking attention to quality. Rolex's commitment to excellence begins at the source.





THE OYSTER BRACELET

## Alchemy of form and function

The design, development and production of Rolex bracelets and clasps, as well as the stringent tests they face, involve advanced high technology. And, as with all the components of the watch, aesthetic controls by the human eye guarantee impeccable beauty.

The Oyster bracelet is a perfect alchemy of form and function. First introduced in the late 1930s, this particularly robust and comfortable metal

bracelet with its broad, flat three-piece links remains the most universal bracelet in the Oyster collection.

# More GMT-Master II

## technical details

Reference 126729VTNR

### Model Case

---

#### Type

Oyster, 40 mm, white gold

#### Diameter

40 mm

#### Material

White gold

#### Bezel

Bidirectional rotatable 24-hour graduated bezel. Two-colour green and black Cerachrom insert in ceramic, moulded numerals and graduations

#### Oyster Architecture

Monobloc middle case, screw-down case back and winding crown

#### Winding Crown

Screw-down, Triplock triple waterproofness system

#### Crystal

Scratch-resistant sapphire, Cyclops lens over the date

#### Water Resistance

Waterproof to 100 metres / 330 feet

### Movement

---

#### Type

Perpetual, mechanical, self-winding, GMT function

#### Calibre

3285, Manufacture Rolex

#### Precision

-2/+2 sec/day, after casing

#### Oscillator

Paramagnetic blue Parachrom hairspring. High-performance Paraflex shock absorbers

### **Winding**

Bidirectional self-winding via Perpetual rotor

### **Power reserve**

Approximately 70 hours

### **Functions**

Centre hour, minute and seconds hands. 24-hour display. Second time zone with independent rapid-setting of the hour hand.

Instantaneous date. Stop-seconds for precise time setting

## **Bracelet**

---

### **Type**

Oyster, three-piece solid links

### **Bracelet Material**

18 ct white gold

### **Clasp**

Folding Oysterlock safety clasp with Easylink 5 mm comfort extension link

## **Dial**

---

### **Type**

Green ceramic

### **Details**

Highly legible Chromalight display with long-lasting blue luminescence

## **Certification**

---

### **Type**

Superlative Chronometer (COSC + Rolex certification after casing)

# Explore and discover more on Rolex.com

**All intellectual property rights such as trademarks, service marks, trade names, designs and copyrights are reserved.**

Nothing contained in this website may be reproduced without written permission. Rolex reserves the right at all times to modify the models featured in the present website.

