



# Lady-Datejust

Oyster, 28 mm, Oystersteel and yellow gold

**This Oyster Perpetual  
Lady-Datejust in  
Oystersteel and yellow  
gold features a  
champagne colour,  
diamond-set dial and an  
Oyster bracelet.**



CHAMPAGNE-COLOUR DIAL

## A watchmaking technique

This dial features diamonds in 18 ct gold settings and a Roman IX in 18 ct gold, set with 8 diamonds. The sunray finish creates delicate light reflections on many dials in the Oyster Perpetual collection. It is obtained using masterful brushing techniques that create grooves running outwards from the centre of the dial.

Light is diffused consistently along each engraving, creating a characteristic subtle glow





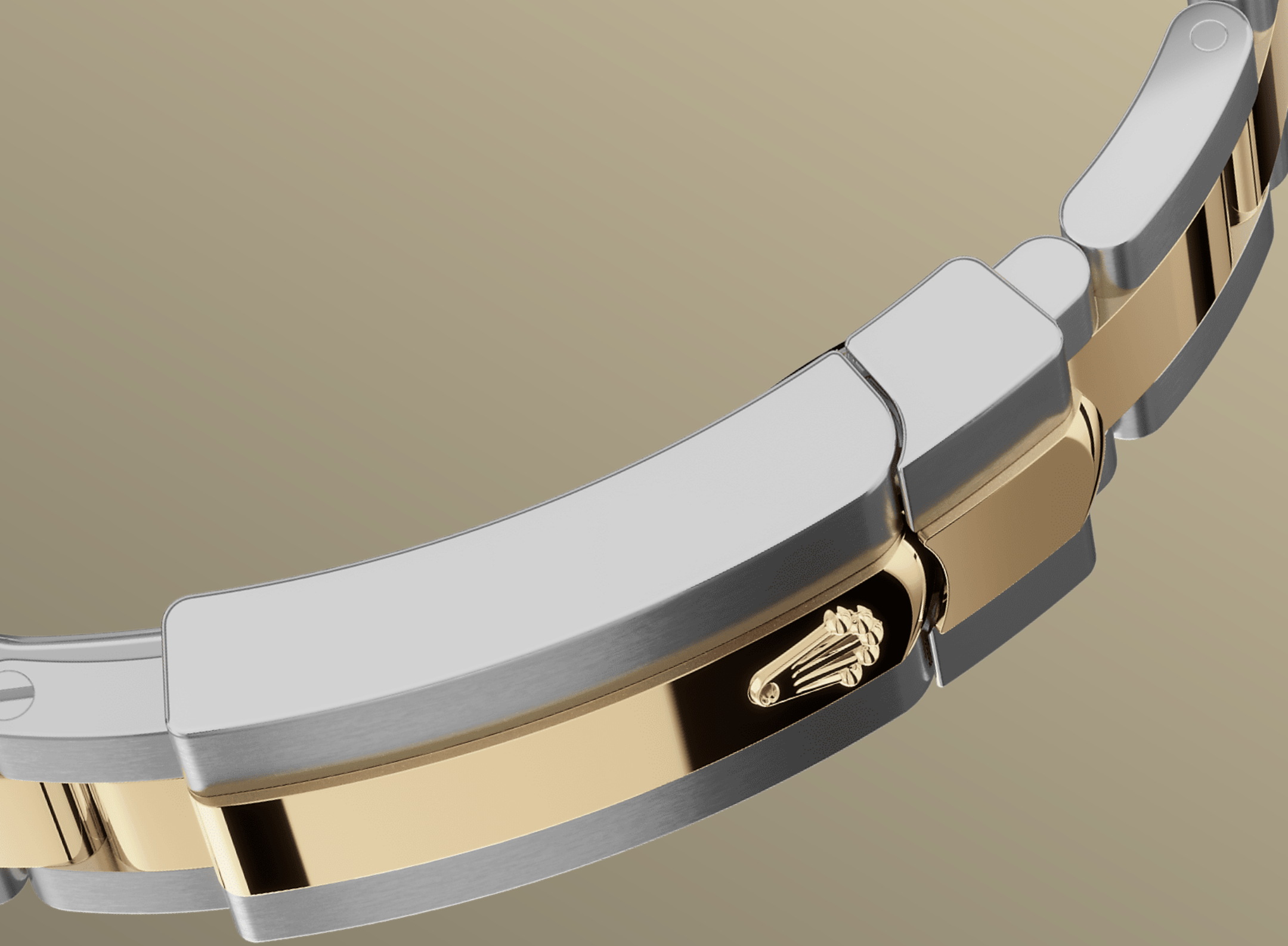


YELLOW ROLESOR

## A meeting of two metals

Gold is coveted for its lustre and nobility. Steel reinforces strength and reliability. Together, they harmoniously combine the best of their properties.

A true Rolex signature, Rolesor has featured on Rolex models since the early 1930s, and was trademarked as a name in 1933. It is one of the prominent pillars of the Oyster Perpetual collection.



THE OYSTER BRACELET

# Alchemy of form and function

The Oyster bracelet is a perfect alchemy of form and function, aesthetics and technology, designed to be both robust and comfortable.

It is equipped with an Oysterclasp and the Easylink comfort extension link, also exclusive to Rolex. This ingenious system allows the wearer to increase the bracelet length by approximately 5 mm, providing additional comfort in any circumstance.



## THE CYCLOPS LENS

# A magnifying lens

The Cyclops lens is one of the most distinctive Rolex features, and one of the most recognizable.

Named after the one-eyed giant of Greek mythology, the Cyclops lens magnifies the watch's emblematic date display for easy reading. Behind the Cyclops, as with every feature of a Rolex timepiece, lies a history of invention, research and development, and the endless search for perfection.

# More Lady-Datejust

## technical details

Reference 279163

### Model Case

---

#### Type

Oyster, 28 mm, Oystersteel and yellow gold

#### Diameter

28 mm

#### Material

Yellow Rolesor

#### Bezel

Domed

#### Oyster Architecture

Monobloc middle case, screw-down case back and winding crown

#### Winding Crown

Screw-down, Twinlock double waterproofness system

#### Crystal

Scratch-resistant sapphire, Cyclops lens over the date

#### Water Resistance

Waterproof to 100 metres / 330 feet

### Movement

---

#### Type

Perpetual, mechanical, self-winding

#### Calibre

2236, Manufacture Rolex

#### Precision

-2/+2 sec/day, after casing

#### Oscillator

Syloxi hairspring in silicon with patented geometry. High-performance Paraflex shock absorbers



**Winding**

Bidirectional self-winding via  
Perpetual rotor

**Power reserve**

Approximately 55 hours

**Functions**

Centre hour, minute and seconds  
hands. Instantaneous date with  
rapid setting. Stop-seconds for  
precise time setting

**Bracelet**

---

**Type**

Oyster, three-piece solid links

**Clasp**

Folding Oysterclasp with Easylink 5  
mm comfort extension link

**Bracelet Material**

Yellow Rolesor - combination of  
Oystersteel and yellow gold

**Dial**

---

**Type**

Champagne-colour set with  
diamonds

**Gem setting**

Diamonds in 18 ct gold settings,  
Roman IX in 18 ct gold set with 8  
diamonds

**Certification**

---

**Type**

Superlative Chronometer (COSC +  
Rolex certification after casing)

# Explore and discover more on Rolex.com

**All intellectual property rights such as trademarks, service marks, trade names, designs and copyrights are reserved.**

Nothing contained in this website may be reproduced without written permission. Rolex reserves the right at all times to modify the models featured in the present website.

