

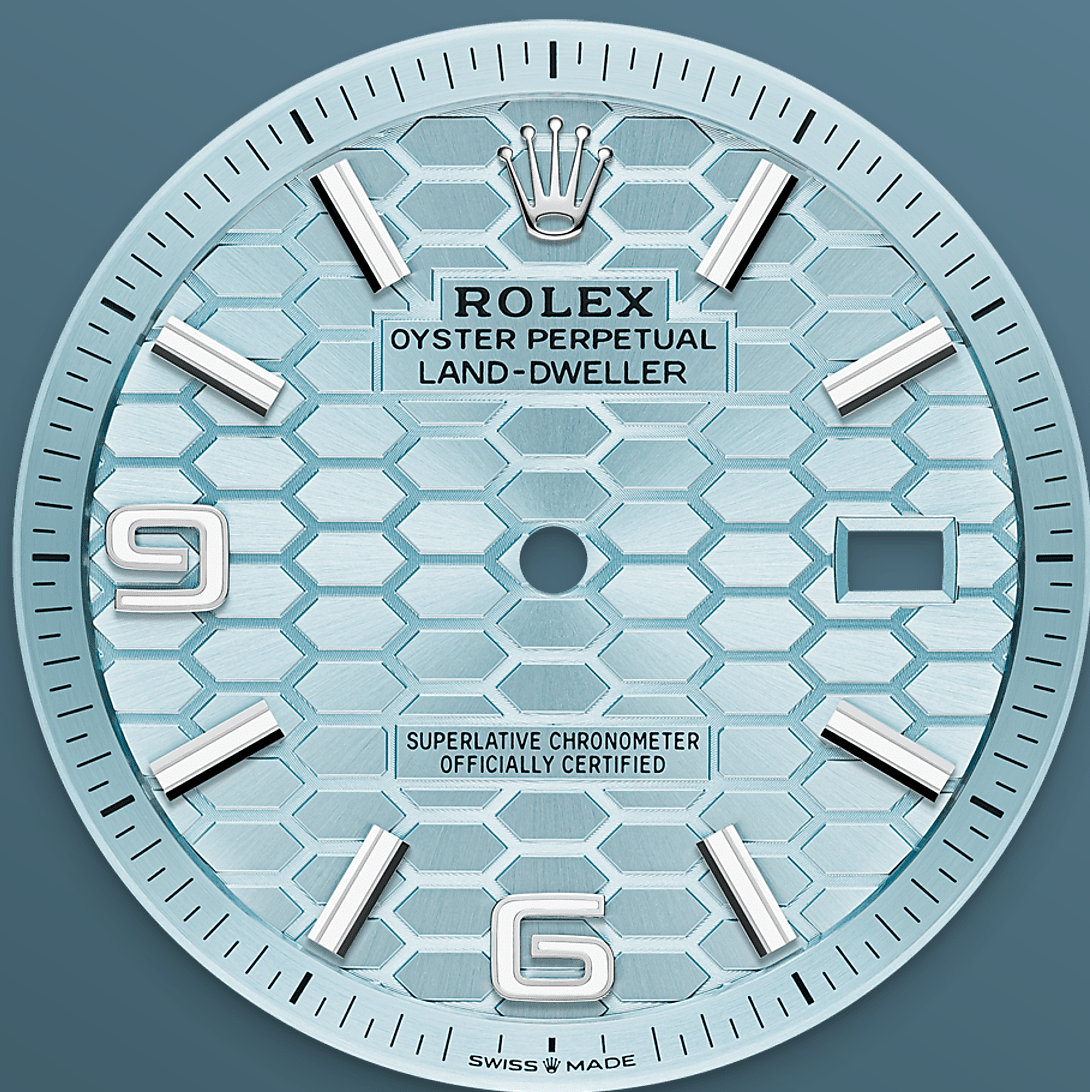


# Land-Dweller 40

Oyster, 40 mm, platinum

**The Land-Dweller 40 in  
platinum with an ice-  
blue, honeycomb-motif  
dial and Flat Jubilee  
bracelet.**





ICE-BLUE DIAL

## Exclusive display

This ice blue – a colour reserved for watches made of platinum – dial is adorned with a honeycomb motif with a sunray finish. Its creation calls on traditional craftsmanship and high-technology methods, all mastered in-house.

The honeycomb structure is cut with a femtosecond laser, which is also used to etch the delicate lines in the grooves separating each cell. The dial features a Chromalight display, the luminescent open numerals and index hour markers grant optimal legibility in any situation.

The hands are also luminescent and have been specially designed for the model.



## FLUTED BEZEL

# A Rolex signature

The Rolex fluted bezel is a mark of distinction. Originally, the fluting of the Oyster bezel had a functional purpose: it served to screw the bezel onto the case helping to ensure the waterproofness of the watch.

It was therefore identical to the fluting on the case back, which was also screwed onto the case for waterproofness, using specific Rolex tools. Over time, the fluting became an aesthetic element, a genuine Rolex signature feature. Today the fluted

bezel is a mark of distinction, in platinum on this  
Land-Dweller 40.





PLATINUM

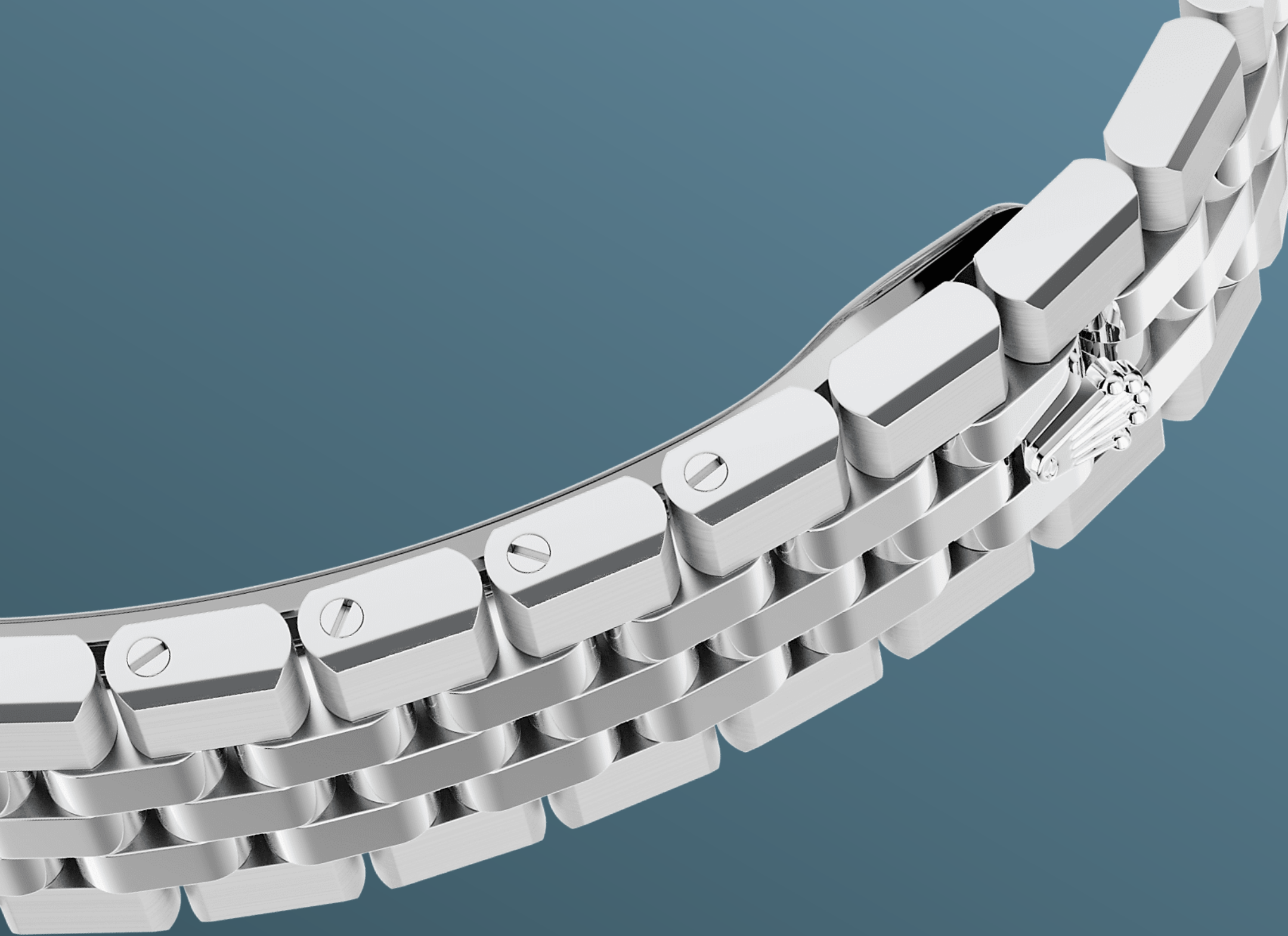
## The noblest of metals

Rare and precious, platinum is striking for its silvery whiteness and vibrant luminosity. It is among the densest and heaviest metals in the world, distinguished by unique chemical and physical properties such as exceptional corrosion resistance.

Paradoxically, it is also soft, elastic and highly malleable, which makes machining and polishing especially difficult, demanding an extremely high degree of skill. Rolex always uses 950 platinum, an alloy consisting of 950‰ (thousandths)

platinum, painstakingly crafted in-house by the fine metalworkers at Rolex. The noblest of metals for the finest of watches.





THE FLAT JUBILEE BRACELET

# Seamless integrated design

Specially designed for this watch, the Flat Jubilee bracelet is a reinterpretation of the emblematic Jubilee bracelet. The Flat Jubilee differs in that all the links are flat, and it merges seamlessly with the Oyster case to form a balanced, harmonious whole, with the alternation of polished and technical satin finishings.

Moreover, the top edges of the bracelet's outer links are bevelled, as are those of the middle case,

and the resulting chamfers polished, creating the appearance of a continuous ribbon of light. It is equipped with a concealed folding Crownclasp.

# More Land-Dweller

## technical details

Reference 127336

### Model Case

---

#### Type

Oyster, 40 mm, platinum

#### Diameter

40 mm

#### Material

Platinum

#### Bezel

Fluted

#### Case Back

Transparent case back with anti-reflective coating

#### Oyster Architecture

Monobloc middle case, screw-down case back and winding crown

#### Winding Crown

Screw-down, Twinlock double waterproofness system

#### Crystal

Scratch-resistant sapphire, Cyclops lens over the date

#### Water Resistance

Waterproof to 100 metres / 330 feet

### Movement

---

#### Type

Perpetual, mechanical, self-winding

#### Calibre

7135, Manufacture Rolex

#### Precision

-2/+2 sec/day, after casing

#### Oscillator

Syloxi hairspring in silicon with patented geometry. High-performance Paraflex shock absorbers

**Winding**

Bidirectional self-winding via  
Perpetual rotor

**Power reserve**

Approximately 66 hours

**Functions**

Centre hour, minute and seconds  
hands. Instantaneous date with  
rapid setting. Stop-seconds for  
precise time setting

**Bracelet**

---

**Type**

Flat Jubilee, five-piece solid links

**Clasp**

Concealed folding Crownclasp

**Bracelet Material**

Platinum

**Dial**

---

**Type**

Ice blue, honeycomb motif

**Details**

Highly legible Chromalight display  
with long-lasting blue luminescence

**Certification**

---

**Type**

Superlative Chronometer (COSC +  
Rolex certification after casing)



# Explore and discover more on Rolex.com

**All intellectual property rights such as trademarks, service marks, trade names, designs and copyrights are reserved.**

Nothing contained in this website may be reproduced without written permission. Rolex reserves the right at all times to modify the models featured in the present website.

