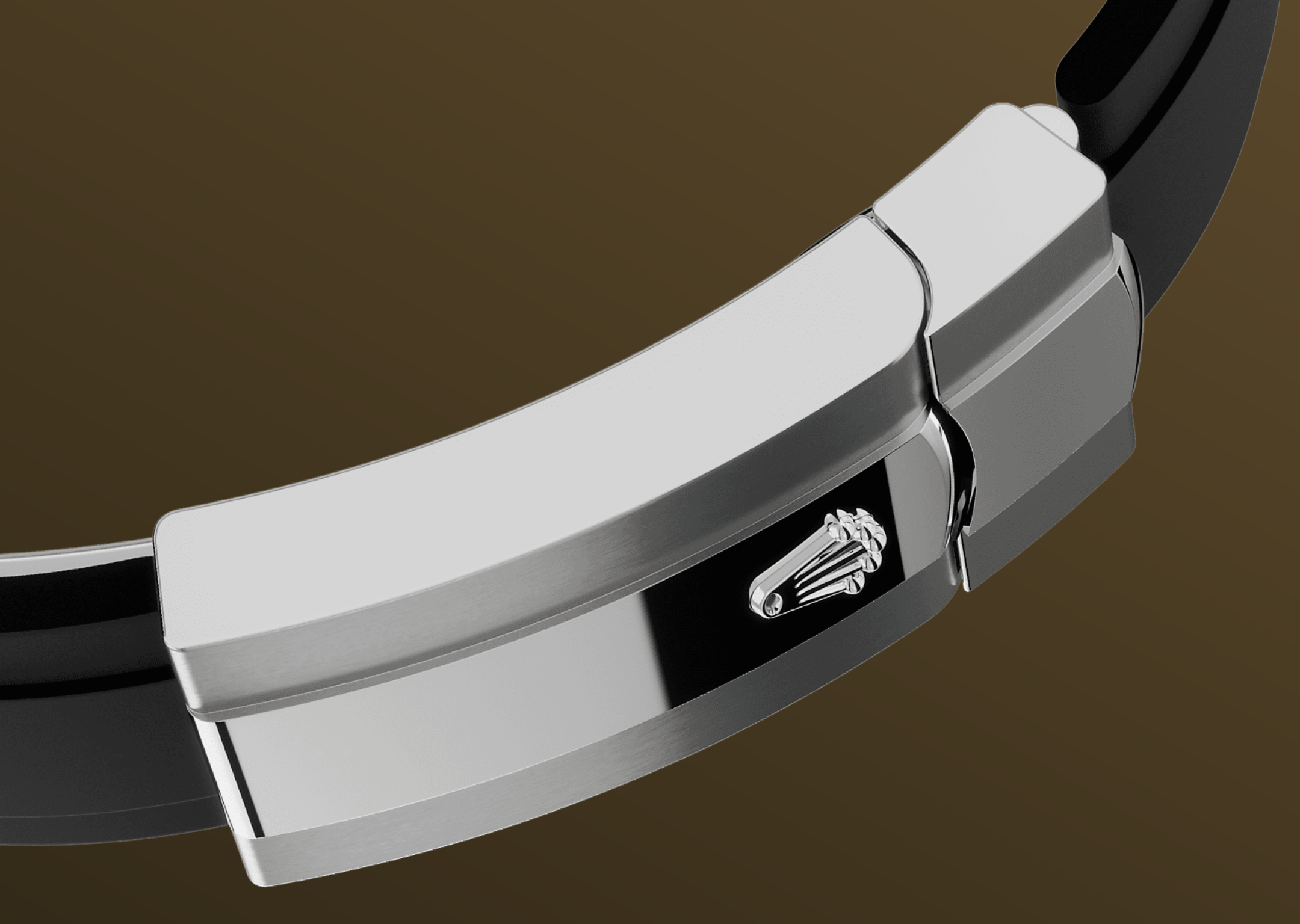




# Sky-Dweller

Oyster, 42 mm, white gold

**The Oyster Perpetual  
Sky-Dweller in 18 ct  
white gold with a bright  
black dial and an  
Oysterflex bracelet.**



THE OYSTERFLEX BRACELET

## Highly resistant and durable

The Sky-Dweller's new Oysterflex bracelet, developed by Rolex and patented, offers a sporty alternative to metal bracelets. The bracelet attaches to the watch case and the Oysterclasp by a flexible titanium and nickel alloy metal blade.

The blade is overmoulded with high-performance black elastomer which is particularly resistant to environmental effects, very durable and perfectly inert for the wearer of the watch. For enhanced

comfort, the inside of the Oysterflex bracelet is equipped with a patented longitudinal cushion system that stabilizes the watch on the wrist and fitted with an 18 ct white gold Oysterclasp. It also features the Rolex Glidelock extension system, designed by the brand and patented. This inventive toothed mechanism, integrated beneath the clasp, allows fine adjustment of the bracelet length by some 15 mm in increments of approximately 2.5 mm, without the use of tools.



18 CT WHITE GOLD

## Commitment to excellence

By operating its own exclusive foundry, Rolex has the unrivalled ability to cast the highest quality 18 ct gold alloys. According to the proportion of silver, copper, platinum or palladium added, different types of 18 ct gold are obtained: yellow, pink or white.

They are made with only the purest metals and meticulously inspected in an in-house laboratory with state-of-the-art equipment, before the gold is

formed and shaped with the same painstaking attention to quality. Rolex's commitment to excellence begins at the source.



BRIGHT BLACK DIAL

## A striking characteristic

A fixed inverted red triangle on the dial points to the chosen reference time – the time at home or at the traveller's usual workplace – on the off-centre 24-hour disc. At a glance, this 24-hour display clearly distinguishes daytime hours from night-time hours in the other time zone.

A deep red rectangle in one of the 12 windows around the dial indicates the current month, a striking characteristic of the Saros annual calendar. This ingenious mechanism simplifies life for the wearer of the watch, who no longer needs

to think about adjusting the date at the end of a 30-day month. The annual calendar displays the correct date through the year. Only one adjustment is needed – on 1 March (February having only 28 or 29 days). The date is connected to local time and automatically changes according to the traveller's local time zone.





THE FLUTED BEZEL

## A Rolex signature

The Rolex fluted bezel is a mark of distinction. Originally, the fluting of the Oyster bezel had a functional purpose: it served to screw the bezel onto the case, helping to ensure the waterproofness of the watch.

It was therefore identical to the fluting on the case back, which was also screwed onto the case for waterproofness, using specific Rolex tools. Over time, the fluting became an aesthetic element, a genuine Rolex signature feature. Today the fluted bezel is a mark of distinction, always in gold. The

Sky-Dweller is equipped with a mechanism of interaction between the rotatable bezel, the winding crown and the movement: the Ring Command system, which allows the user to select the watch's functions one-by-one and to set them easily, quickly and securely.

# More Sky-Dweller

## technical details

Reference 336239

### Model Case

---

#### Type

Oyster, 42 mm, white gold

#### Diameter

42 mm

#### Material

White gold

#### Bezel

Fluted, bidirectional rotatable Rolex Ring Command

#### Oyster Architecture

Monobloc middle case, screw-down case back and winding crown

#### Winding Crown

Screw-down, Twinlock double waterproofness system

#### Crystal

Scratch-resistant sapphire, Cyclops lens over the date

#### Water Resistance

Waterproof to 100 metres / 330 feet

### Movement

---

#### Type

Perpetual, mechanical, self-winding, dual time zones, annual calendar

#### Calibre

9002, manufacture Rolex

#### Precision

-2/+2 sec/day, after casing

#### Oscillator

Paramagnetic blue Parachrom hairspring. High-performance Paraflex shock absorbers

## **Winding**

Bidirectional self-winding via Perpetual rotor

## **Power reserve**

Approximately 72 hours

## **Functions**

Centre hour, minute and seconds hands. 24-hour display on off-centre disc. Second time zone. Instantaneous annual calendar at 3 o'clock and rapid-setting of the date. Month display via 12 apertures around the circumference of the dial. Stop-seconds for precise time setting

# **Bracelet**

---

## **Type**

Oysterflex

## **Clasp**

Folding Oysterclasp with Rolex Glidelock extension system

## **Bracelet Material**

Flexible metal blades overmoulded with high-performance elastomer

# **Dial**

---

## **Type**

Bright black

## **Details**

Highly legible Chromalight display with long-lasting blue luminescence

# **Certification**

---

## **Type**

Superlative Chronometer (COSC + Rolex certification after casing)

# Explore and discover more on Rolex.com

**All intellectual property rights such as trademarks, service marks, trade names, designs and copyrights are reserved.**

Nothing contained in this website may be reproduced without written permission. Rolex reserves the right at all times to modify the models featured in the present website.

