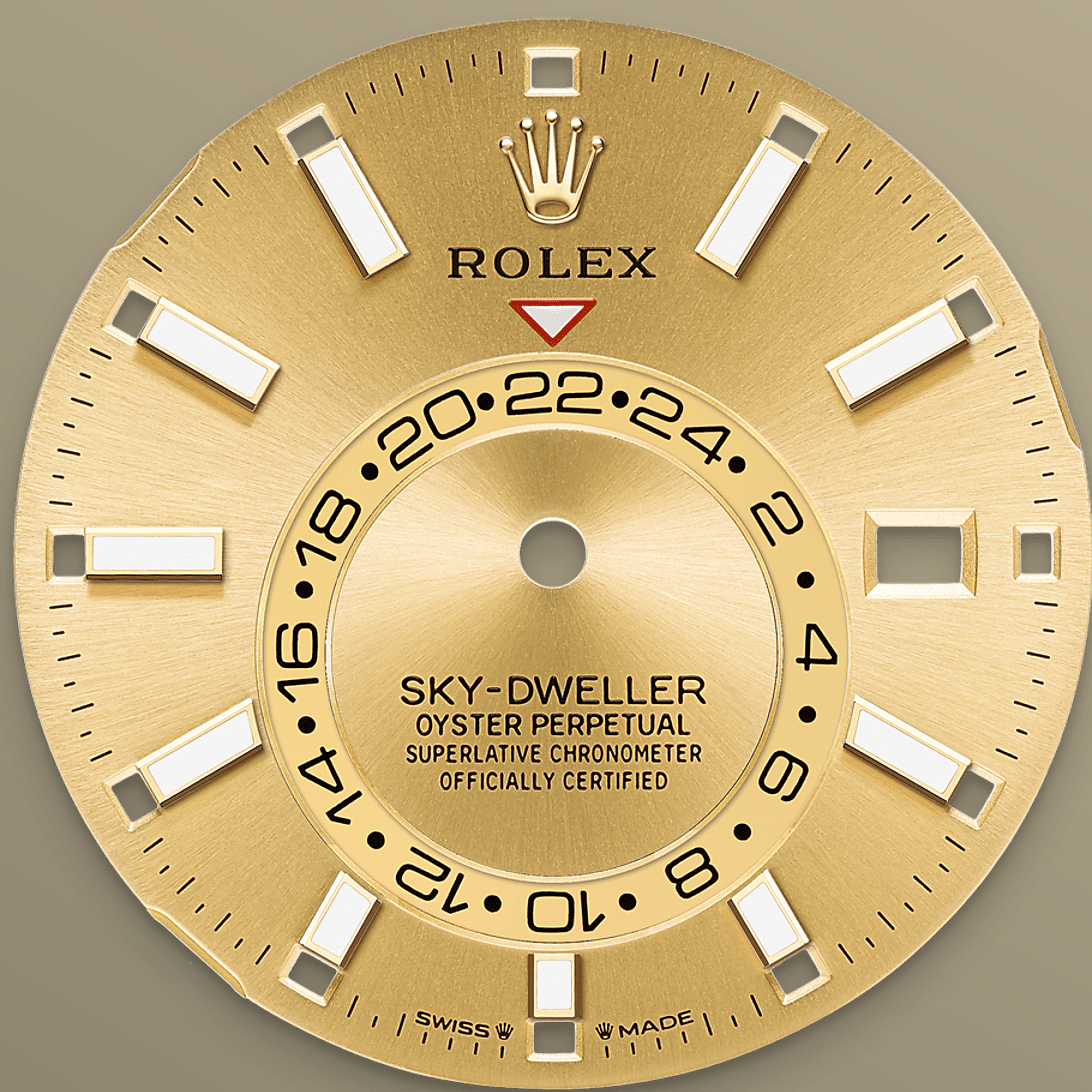




# Sky-Dweller

Oyster, 42 mm, Oystersteel and yellow gold

**The Oyster Perpetual  
Sky-Dweller in  
Oystersteel and yellow  
gold with a champagne-  
colour dial and an  
Oyster bracelet.**



CHAMPAGNE-COLOUR DIAL

## A striking characteristic

A fixed inverted red triangle on the dial points to the chosen reference time – the time at home or at the traveller's usual workplace – on the off-centre 24-hour disc. At a glance, this 24-hour display clearly distinguishes daytime hours from night-time hours in the other time zone.

A deep red rectangle in one of the 12 windows around the dial indicates the current month, a striking characteristic of the Saros annual calendar. This ingenious mechanism simplifies life for the wearer of the watch, who no longer needs





## THE FLUTED BEZEL

# A Rolex signature

The Rolex fluted bezel is a mark of distinction. Originally, the fluting of the Oyster bezel had a functional purpose: it served to screw the bezel onto the case, helping to ensure the waterproofness of the watch.

It was therefore identical to the fluting on the case back, which was also screwed onto the case for waterproofness, using specific Rolex tools. Over time, the fluting became an aesthetic element, a genuine Rolex signature feature. Today the fluted bezel is a mark of distinction, always in gold. The



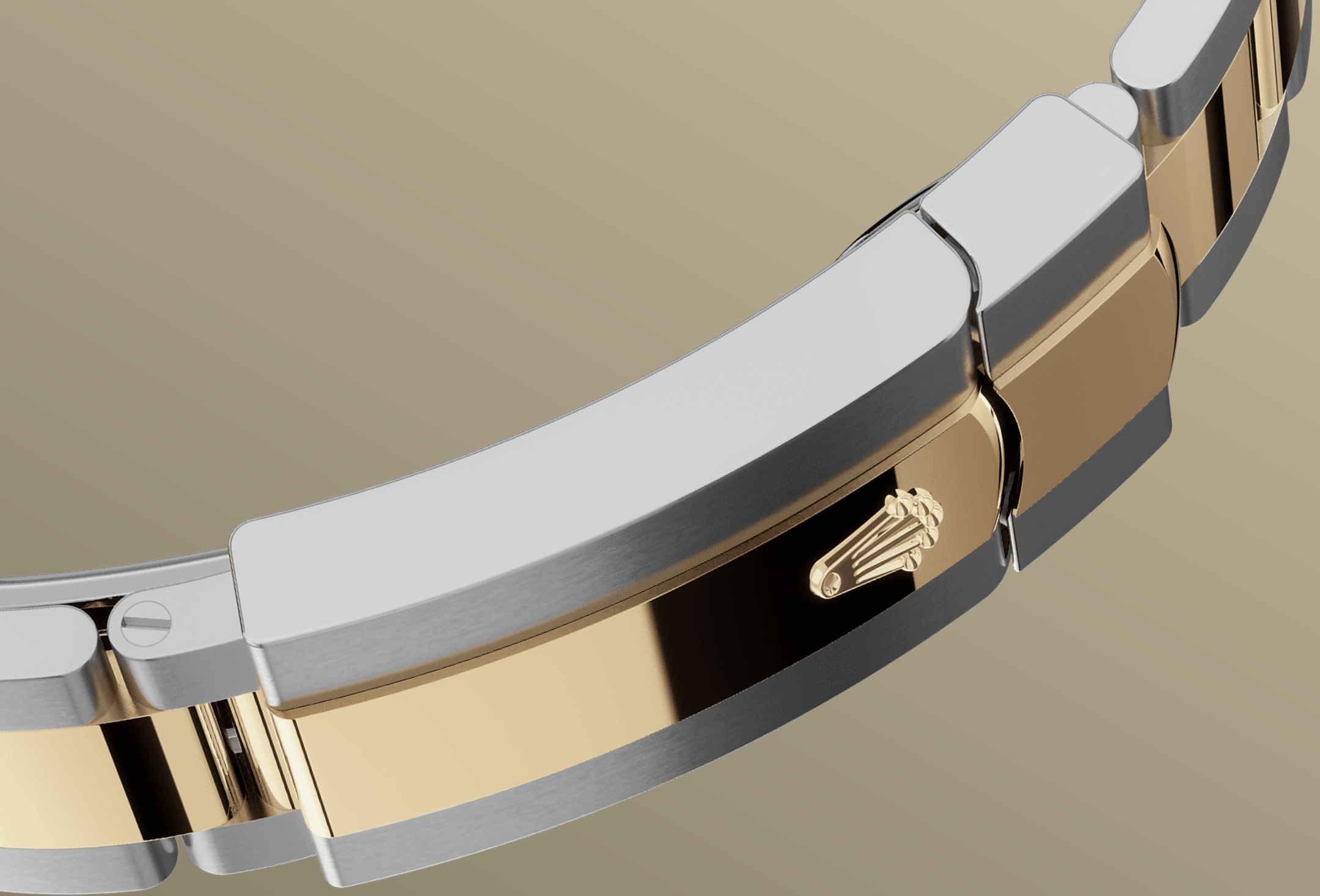


YELLOW ROLESOR

## A meeting of two metals

Gold is coveted for its lustre and nobility. Steel reinforces strength and reliability. Together, they harmoniously combine the best of their properties.

A true Rolex signature, Rolesor has featured on Rolex models since the early 1930s, and was trademarked as a name in 1933. It is one of the prominent pillars of the Oyster Perpetual collection.



THE OYSTER BRACELET

# Alchemy of form and function

The Sky-Dweller is fitted on a solid-link Oyster bracelet in Oystersteel, in the case of the white Rolesor version, or, for the yellow Rolesor version, an Oyster bracelet combining Oystersteel and yellow gold.

The Oyster bracelet benefits from the new concealed attachment system beneath the bezel which ensures seamless visual continuity between the bracelet and case. It is equipped with a folding



# More Sky-Dweller

## technical details

Reference 336933

### Model Case

---

#### Type

Oyster, 42 mm, Oystersteel and yellow gold

#### Diameter

42 mm

#### Material

Yellow Rolesor

#### Bezel

Fluted, bidirectional rotatable Rolex Ring Command

#### Oyster Architecture

Monobloc middle case, screw-down case back and winding crown

#### Winding Crown

Screw-down, Twinlock double waterproofness system

#### Crystal

Scratch-resistant sapphire, Cyclops lens over the date

#### Water Resistance

Waterproof to 100 metres / 330 feet

### Movement

---

#### Type

Perpetual, mechanical, self-winding, dual time zones, annual calendar

#### Calibre

9002, manufacture Rolex

#### Precision

-2/+2 sec/day, after casing

#### Oscillator

Paramagnetic blue Parachrom hairspring. High-performance Paraflex shock absorbers

**Winding**

Bidirectional self-winding via  
Perpetual rotor

**Power reserve**

Approximately 72 hours

**Functions**

Centre hour, minute and seconds  
hands. 24-hour display on off-  
centre disc. Second time zone.  
Instantaneous annual calendar at 3  
o'clock and rapid-setting of the  
date. Month display via 12  
apertures around the circumference  
of the dial. Stop-seconds for  
precise time setting

**Bracelet**

---

**Type**

Oyster, three-piece solid links

**Clasp**

Folding Oysterclasp with Easylink 5  
mm comfort extension link

**Bracelet Material**

Yellow Rolesor - combination of  
Oystersteel and yellow gold

**Dial**

---

**Type**

Champagne-colour

**Details**

Highly legible Chromalight display  
with long-lasting blue luminescence

**Certification**

---

**Type**

Superlative Chronometer (COSC +  
Rolex certification after casing)

# Explore and discover more on Rolex.com

**All intellectual property rights such as trademarks, service marks, trade names, designs and copyrights are reserved.**

Nothing contained in this website may be reproduced without written permission. Rolex reserves the right at all times to modify the models featured in the present website.

