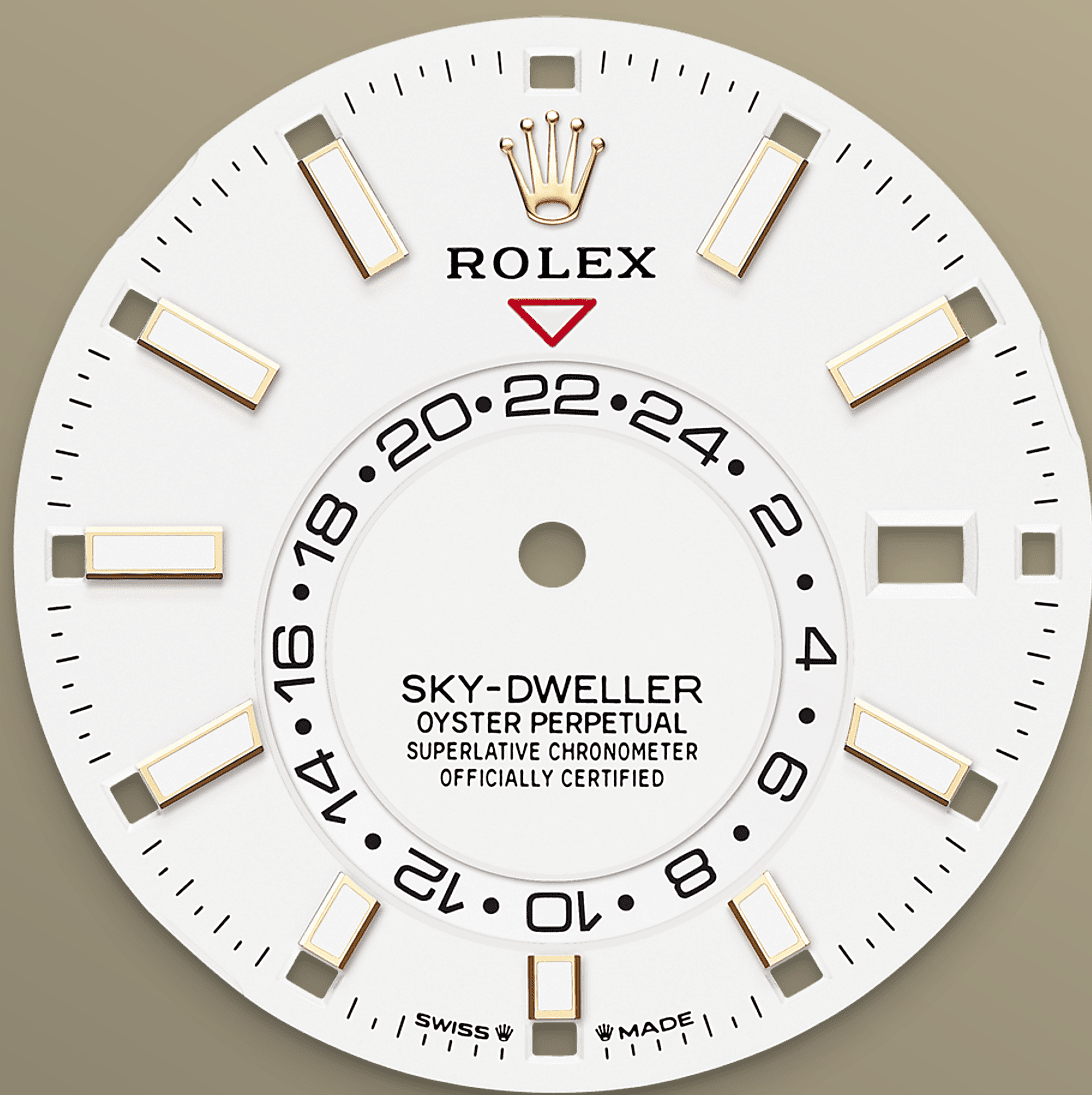




# Sky-Dweller

Oyster, 42 mm, yellow gold

**The Oyster Perpetual  
Sky-Dweller in 18 ct  
yellow gold with an  
intense white dial and a  
Jubilee bracelet.**



INTENSE WHITE DIAL

## A striking characteristic

A fixed inverted red triangle on the dial points to the chosen reference time – the time at home or at the traveller's usual workplace – on the off-centre 24-hour disc. At a glance, this 24-hour display clearly distinguishes daytime hours from night-time hours in the other time zone.

A deep red rectangle in one of the 12 windows around the dial indicates the current month, a striking characteristic of the Saros annual calendar. This ingenious mechanism simplifies life for the wearer of the watch, who no longer needs







## THE FLUTED BEZEL

# A Rolex signature

The Rolex fluted bezel is a mark of distinction. Originally, the fluting of the Oyster bezel had a functional purpose: it served to screw the bezel onto the case, helping to ensure the waterproofness of the watch.

It was therefore identical to the fluting on the case back, which was also screwed onto the case for waterproofness, using specific Rolex tools. Over time, the fluting became an aesthetic element, a genuine Rolex signature feature. Today the fluted bezel is a mark of distinction, always in gold. The





18 CT YELLOW GOLD

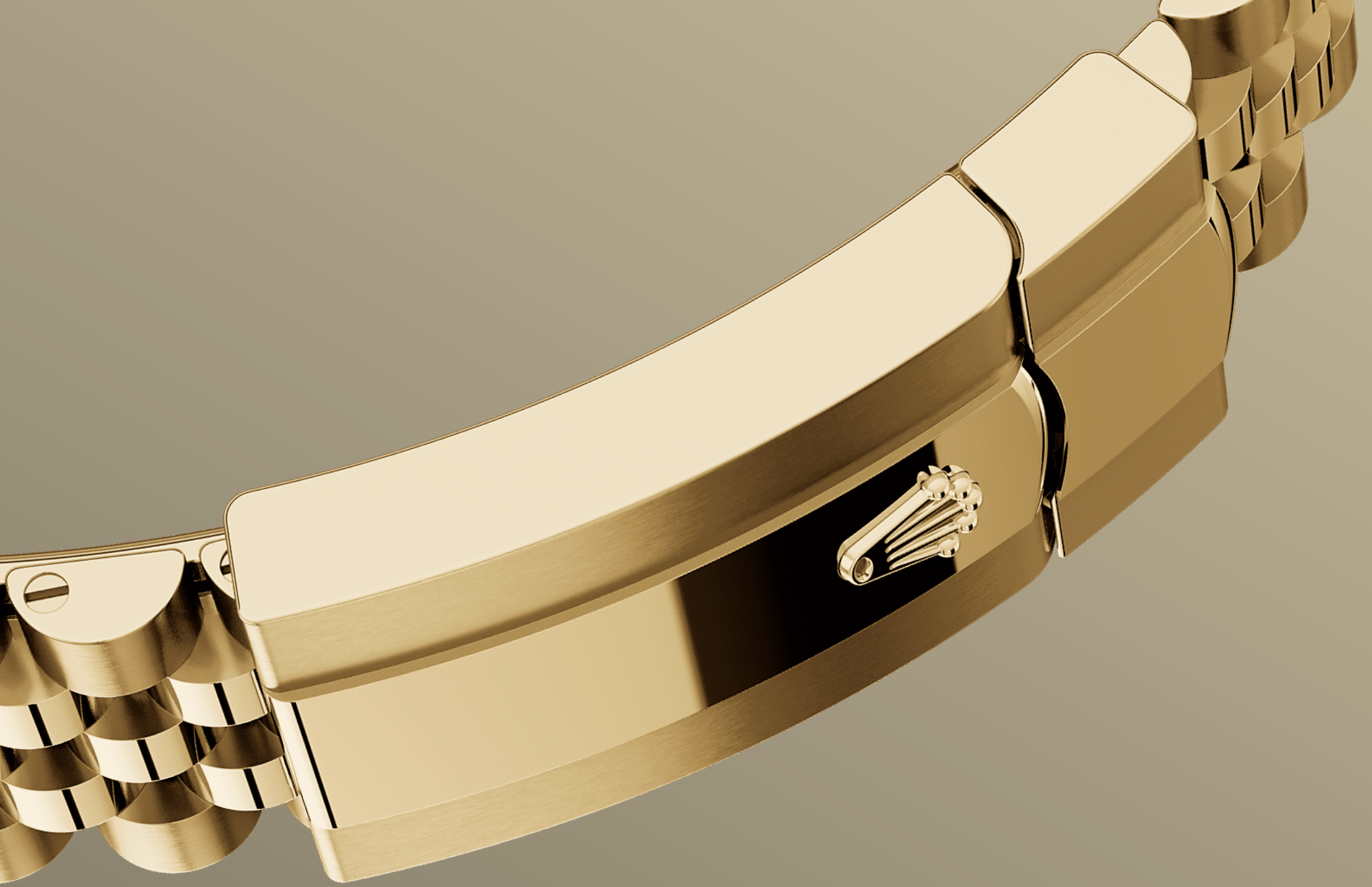
## Commitment to excellence

By operating its own exclusive foundry, Rolex has the unrivalled ability to cast the highest quality 18 ct gold alloys. According to the proportion of silver, copper, platinum or palladium added, different types of 18 ct gold are obtained: yellow, pink or white.

They are made with only the purest metals and meticulously inspected in an in-house laboratory with state-of-the-art equipment, before the gold is







## THE JUBILEE BRACELET

# Supple and comfortable

Supple and comfortable, this five-piece link metal bracelet was specially created for the Oyster Perpetual Datejust, which was launched in 1945.

The Jubilee bracelet on these watches is equipped with a folding Oysterclasp and features the Easylink comfort extension link, developed by Rolex, which allows the wearer to easily adjust the bracelet length by approximately 5 mm. The bracelet also includes patented ceramic inserts – designed by the brand – inside the links to enhance its flexibility on the wrist and its longevity.

# More Sky-Dweller

## technical details

Reference 336938

### Model Case

---

#### Type

Oyster, 42 mm, yellow gold

#### Diameter

42 mm

#### Material

Yellow gold

#### Bezel

Fluted, bidirectional rotatable Rolex Ring Command

#### Oyster Architecture

Monobloc middle case, screw-down case back and winding crown

#### Winding Crown

Screw-down, Twinlock double waterproofness system

#### Crystal

Scratch-resistant sapphire, Cyclops lens over the date

#### Water Resistance

Waterproof to 100 metres / 330 feet

### Movement

---

#### Type

Perpetual, mechanical, self-winding, dual time zones, annual calendar

#### Calibre

9002, manufacture Rolex

#### Precision

-2/+2 sec/day, after casing

#### Oscillator

Paramagnetic blue Parachrom hairspring. High-performance Paraflex shock absorbers

**Winding**

Bidirectional self-winding via  
Perpetual rotor

**Power reserve**

Approximately 72 hours

**Functions**

Centre hour, minute and seconds  
hands. 24-hour display on off-  
centre disc. Second time zone.  
Instantaneous annual calendar at 3  
o'clock and rapid-setting of the  
date. Month display via 12  
apertures around the circumference  
of the dial. Stop-seconds for  
precise time setting

**Bracelet**

---

**Type**

Jubilee, five-piece links

**Clasp**

Folding Oysterclasp with Easylink 5  
mm comfort extension link

**Bracelet Material**

18 ct yellow gold

**Dial**

---

**Type**

Intense white

**Details**

Highly legible Chromalight display  
with long-lasting blue luminescence

**Certification**

---

**Type**

Superlative Chronometer (COSC +  
Rolex certification after casing)

# Explore and discover more on Rolex.com

**All intellectual property rights such as trademarks, service marks, trade names, designs and copyrights are reserved.**

Nothing contained in this website may be reproduced without written permission. Rolex reserves the right at all times to modify the models featured in the present website.

