



Yacht-Master II

Oyster, 44 mm, Oystersteel

**The Oyster Perpetual
Yacht-Master II in
Oystersteel with an
Oyster bracelet and a
bidirectional rotatable
bezel with a blue
Cerachrom insert.**

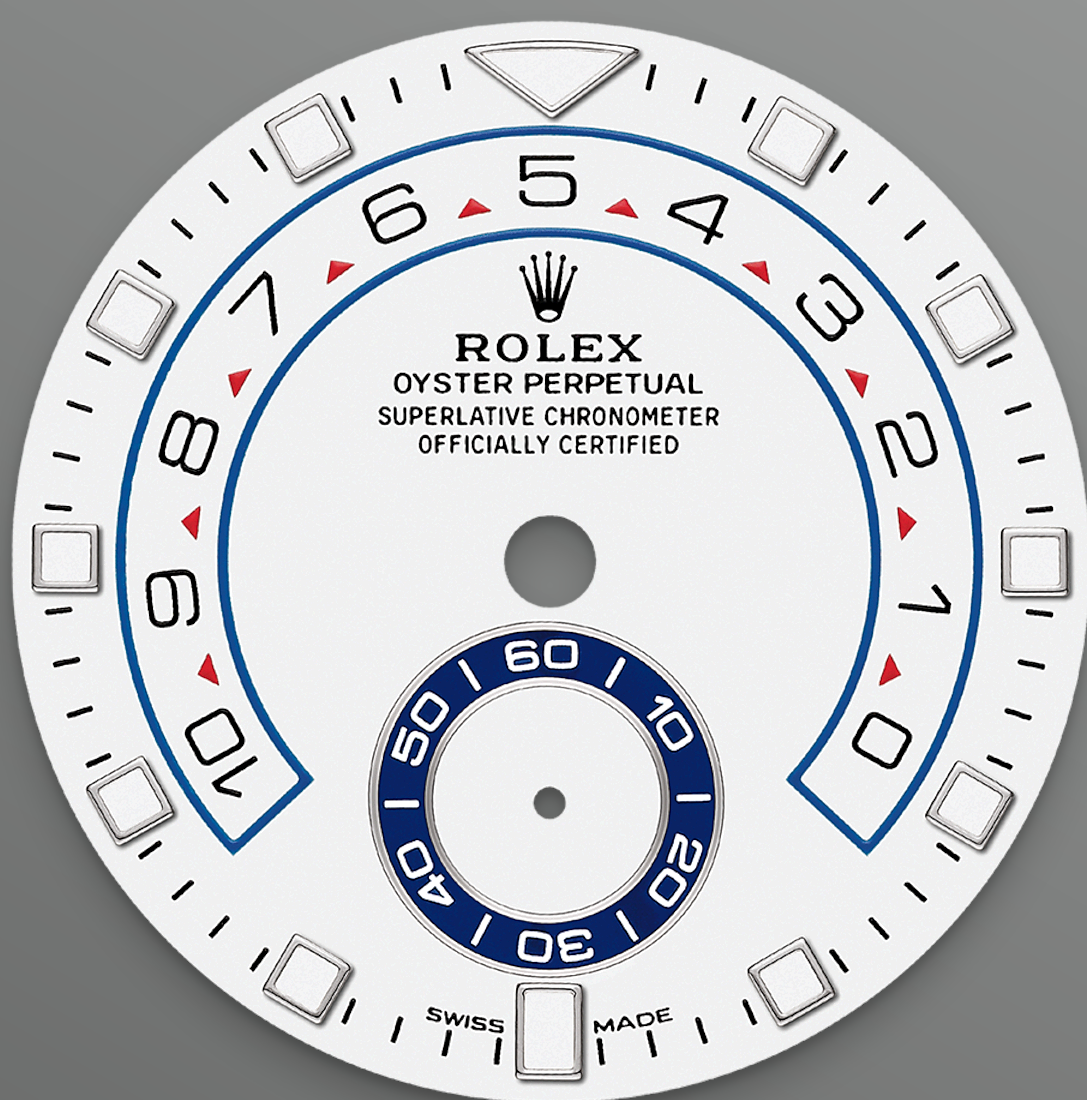


RING COMMAND BEZEL

A synchronized countdown

Rolex achieved perfection when it turned its attention to redefining the purpose and functionality of the bezel. Typically, a bezel operates independently from the internal mechanism; however, the Ring Command bezel in the Yacht-Master II regatta chronograph operates in conjunction with it.

As a mechanical component linked to the movement, the bezel literally acts as the key to the



WHITE DIAL

A characteristic aesthetic

The Yacht-Master II is equipped with a new dial, and new hands that are characteristic of Rolex Professional models, enhancing legibility and sharpening its aesthetic appeal. The dial now features a triangular hour marker at 12 o'clock and a rectangular hour marker at 6 o'clock for more intuitive reading of the watch.

A luminescent disc on the hour hand clearly distinguishes it from the minute hand. The Yacht-

Master II's countdown can be programmed for a duration of between 1 and 10 minutes. The programming is memorized by the mechanism so that at a reset it returns to the previous setting. Once launched, the countdown can be synchronized on the fly to match the official race countdown.

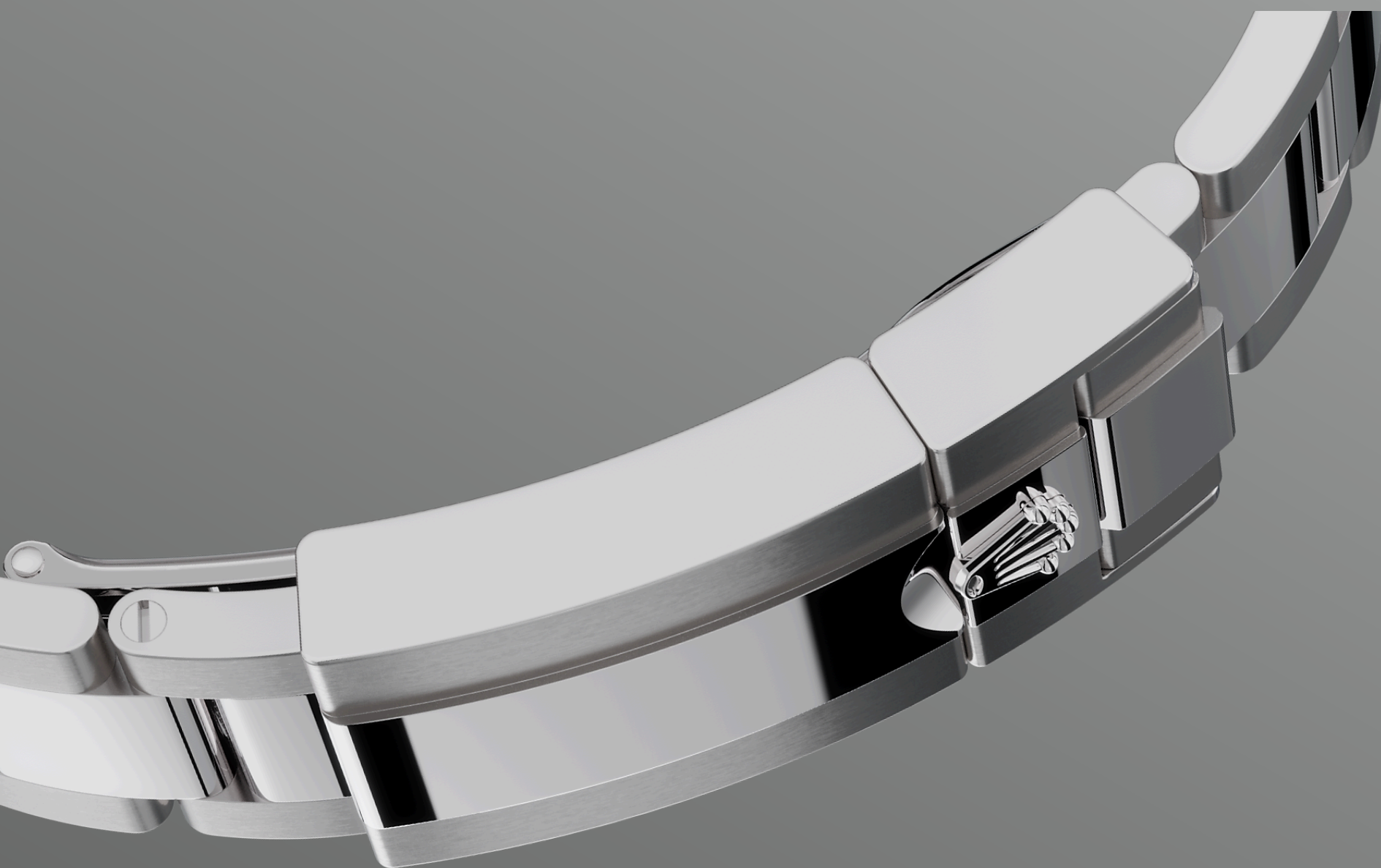


OYSTERSTEEL

Highly resistant to corrosion

Rolex uses Oystersteel for its steel watch cases. Specially developed by the brand, Oystersteel belongs to the 904L steel family, alloys most commonly used in high-technology and in the aerospace and chemical industries, where maximum resistance to corrosion is essential.

Oystersteel is extremely resistant, offers an exceptional finish once polished and maintains its beauty even in the harshest environments.



THE OYSTER BRACELET

Alchemy of form and function

The Oyster bracelet is a perfect alchemy of form and function, aesthetics and technology, designed to be both robust and comfortable. It is equipped with an Oysterlock folding clasp, which prevents accidental opening and the Easylink comfort extension link, also exclusive to Rolex.

This ingenious system allows the wearer to increase the bracelet length by approximately 5

More Yacht-Master

technical details

Reference 116680

Model Case

Type

Oyster, 44 mm, Oystersteel

Diameter

44 mm

Material

Oystersteel

Bezel

Bidirectional rotatable Ring
Command bezel. Blue Cerachrom insert in ceramic, moulded numerals and inscription

Oyster Architecture

Monobloc middle case, screw-down case back and winding crown

Winding Crown

Screw-down, Triplock triple waterproofness system

Crystal

Scratch-resistant sapphire

Water Resistance

Waterproof to 100 metres / 330 feet

Movement

Type

Perpetual, mechanical, self-winding, regatta chronograph

Calibre

4161, Manufacture Rolex

Precision

-2/+2 sec/day, after casing

Oscillator

Paramagnetic blue Parachrom hairspring

Winding

Bidirectional self-winding via Perpetual rotor

Power reserve

Approximately 72 hours

Functions

Centre hour and minute hands, small seconds hand at 6 o'clock. Programmable countdown with mechanical memory and on-the-fly synchronization. Stop-seconds for precise time setting

Bracelet

Type

Oyster, three-piece solid links

Clasp

Folding Oysterlock safety clasp with Easylink 5 mm comfort extension link

Bracelet Material

Oystersteel

Dial

Type

White

Details

Highly legible Chromalight display with long-lasting blue luminescence

Certification

Type

Superlative Chronometer (COSC + Rolex certification after casing)

Explore and discover more on Rolex.com

All intellectual property rights such as trademarks, service marks, trade names, designs and copyrights are reserved.

Nothing contained in this website may be reproduced without written permission. Rolex reserves the right at all times to modify the models featured in the present website.

