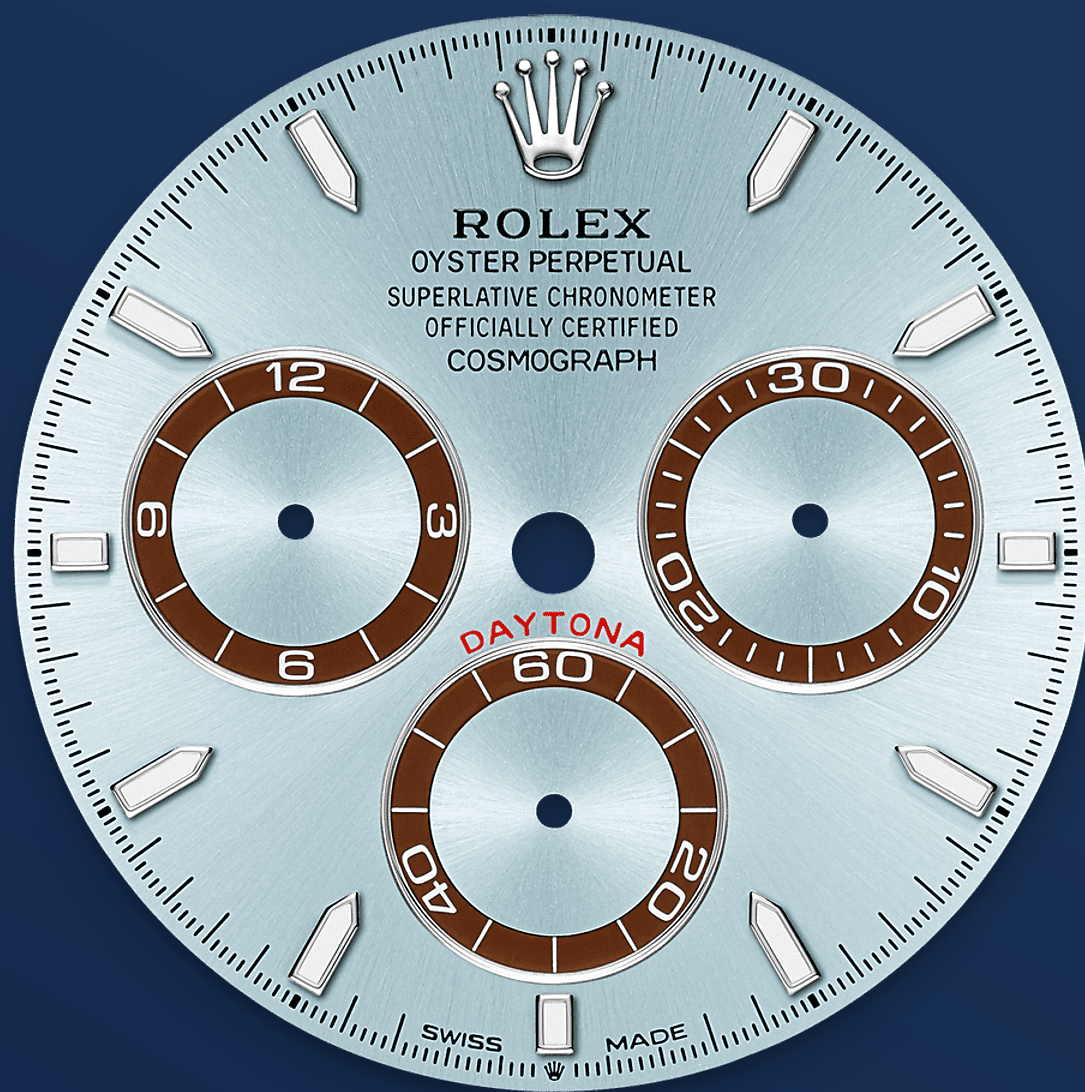




Cosmograph Daytona

Oyster, 40 mm, platinum

**The Oyster Perpetual
Cosmograph Daytona in
platinum with an ice-
blue dial and contrasting
counter rings. It features
an Oyster bracelet and a
chestnut brown
Cerachrom bezel with
tachymetric scale.**

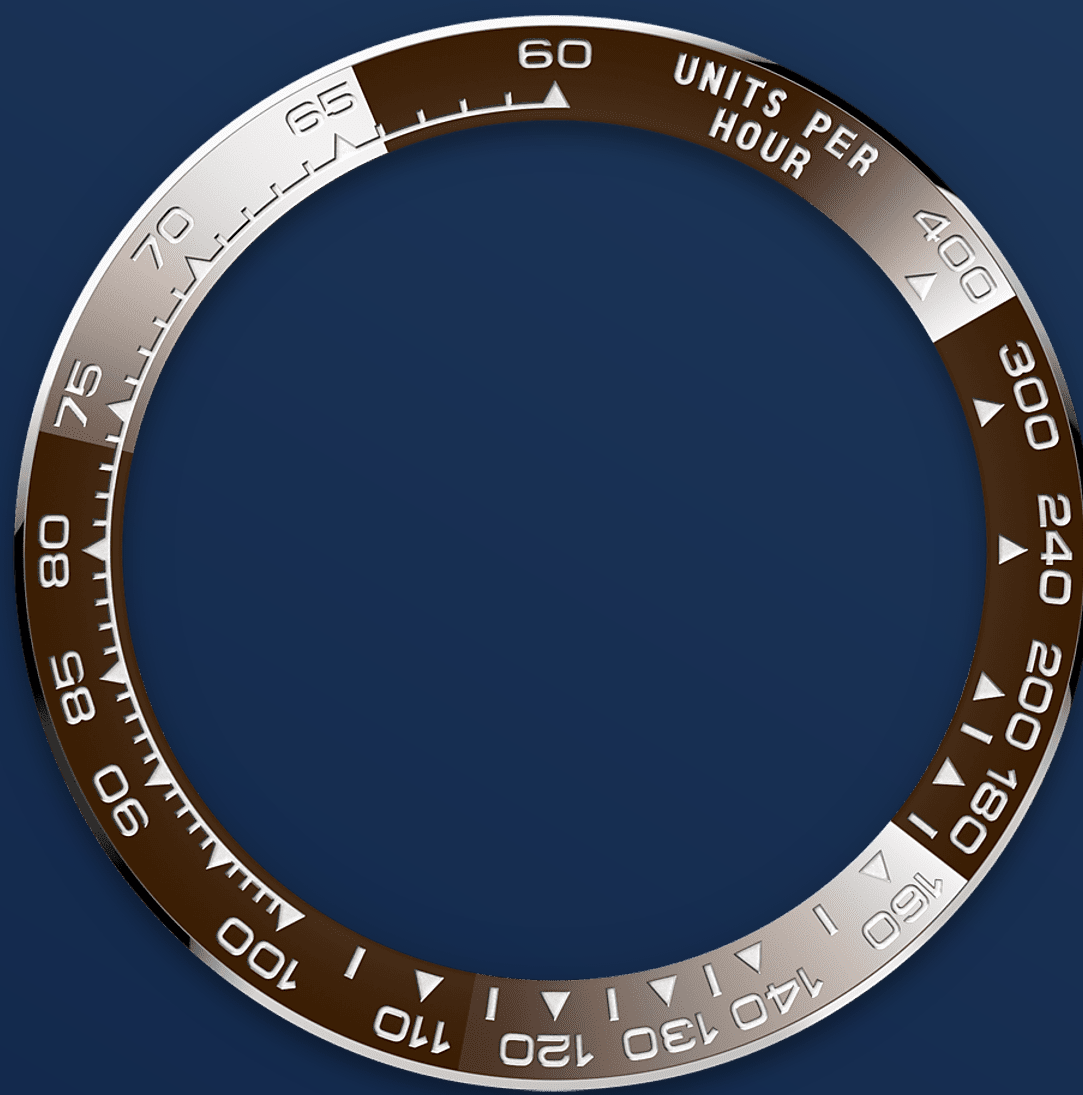


ICE-BLUE DIAL

With chronograph counters

This model features an ice-blue dial with spray-coated counters, 18 kt gold applique hour markers and hands with a Chromalight display, a highly-legible luminescent material.

The dial allows drivers to accurately map out their track times and tactics without fail.



THE TACHYMETRIC SCALE

High-performance chronograph

A key part of the model's identity is the bezel moulded with a tachymetric scale for measuring average speeds of up to 400 miles or kilometres per hour. The monobloc Cerachrom bezel in high-tech ceramic offers a number of advantages: it is corrosion resistant, virtually scratchproof and the colour is unaffected by UV rays.

This extremely durable bezel also offers an exceptionally legible tachymetric scale, thanks to

the deposition of a thin layer of platinum in the numerals and graduations via a PVD (Physical Vapour Deposition) process. The monobloc Cerachrom bezel is made in a single piece and holds the crystal firmly in place on the middle case, ensuring waterproofness.



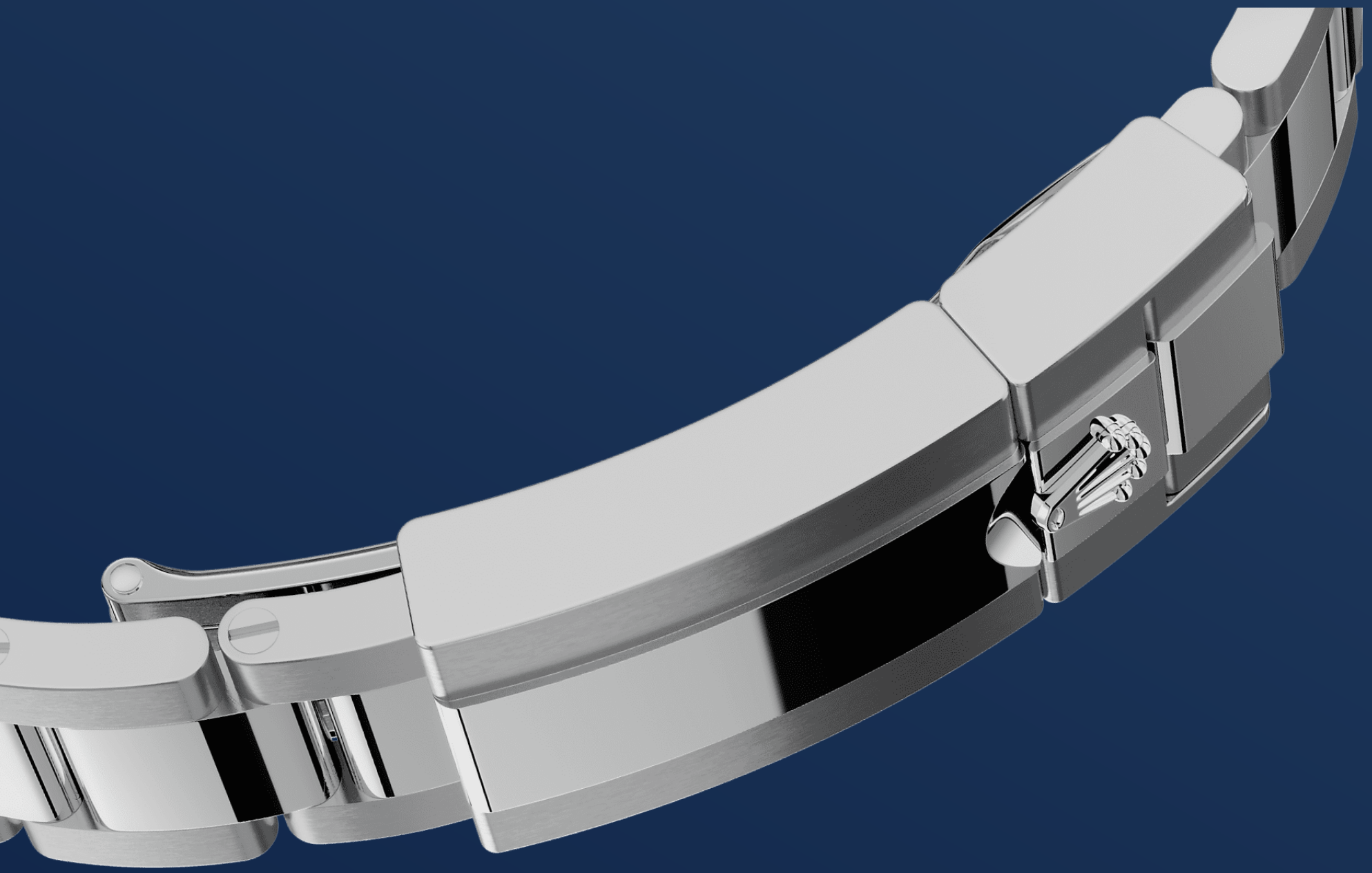
PLATINUM

The noblest of metals

Rare and precious, platinum is striking for its silvery whiteness and vibrant luminosity. It is among the densest and heaviest metals in the world, distinguished by unique chemical and physical properties such as exceptional corrosion resistance.

Paradoxically, it is also soft, elastic and highly malleable, which makes machining and polishing especially difficult, demanding an extremely high degree of skill. Rolex always uses 950 platinum, an alloy consisting of 950‰ (thousandths)

platinum, painstakingly crafted in-house by the fine metalworkers at Rolex. The noblest of metals for the finest of watches.



THE OYSTER BRACELET

Alchemy of form and function

The design, development and production of Rolex bracelets and clasps, as well as the stringent tests they face, involve advanced high technology. And, as with all the components of the watch, aesthetic controls by the human eye guarantee impeccable beauty.

The Oyster bracelet is a perfect alchemy of form and function. First introduced in the late 1930s, this particularly robust and comfortable metal

bracelet with its broad, flat three-piece links remains the most universal bracelet in the Oyster collection.

more technical-details

Cosmograph Daytona

reference 126506

model-case

type

Oyster, 40 mm, platinum

diameter

40 mm

material

Platinum

bezel

Chestnut brown monobloc
Cerachrom bezel in ceramic with
moulded numerals and graduations

oyster-architecture

Monobloc middle case, screw-down
case back and winding crown

winding-crown

Screw-down, Triplock triple
waterproofness system

crystal

Scratch-resistant sapphire

water-resistance

Waterproof to 100 metres / 330
feet

movement

type

Perpetual, mechanical chronograph,
self-winding

calibre

4131, manufacture Rolex

precision

-2/+2 sec/day, after casing

oscillator

Paramagnetic blue Parachrom
hairspring. High-performance
Paraflex shock absorbers

winding

Bidirectional self-winding via
Perpetual rotor

power-reserve

Approximately 72 hours

functions

Centre hour and minute hands, small seconds hand at 6 o'clock. Chronograph via centre seconds hand, 30-minute counter at 3 o'clock and 12-hour counter at 9 o'clock. Stop seconds for exact time setting

bracelet

type

Oyster, three-piece solid links

bracelet-material

Platinum

clasp

Folding Oysterlock safety clasp with Easylink 5 mm comfort extension link

dial

type

Ice blue, chestnut brown counter rings

details

Highly legible Chromalight display with long-lasting blue luminescence

certification

type

Superlative Chronometer (COSC + Rolex certification after casing)

explore-title

explore-text

explore-text-2

