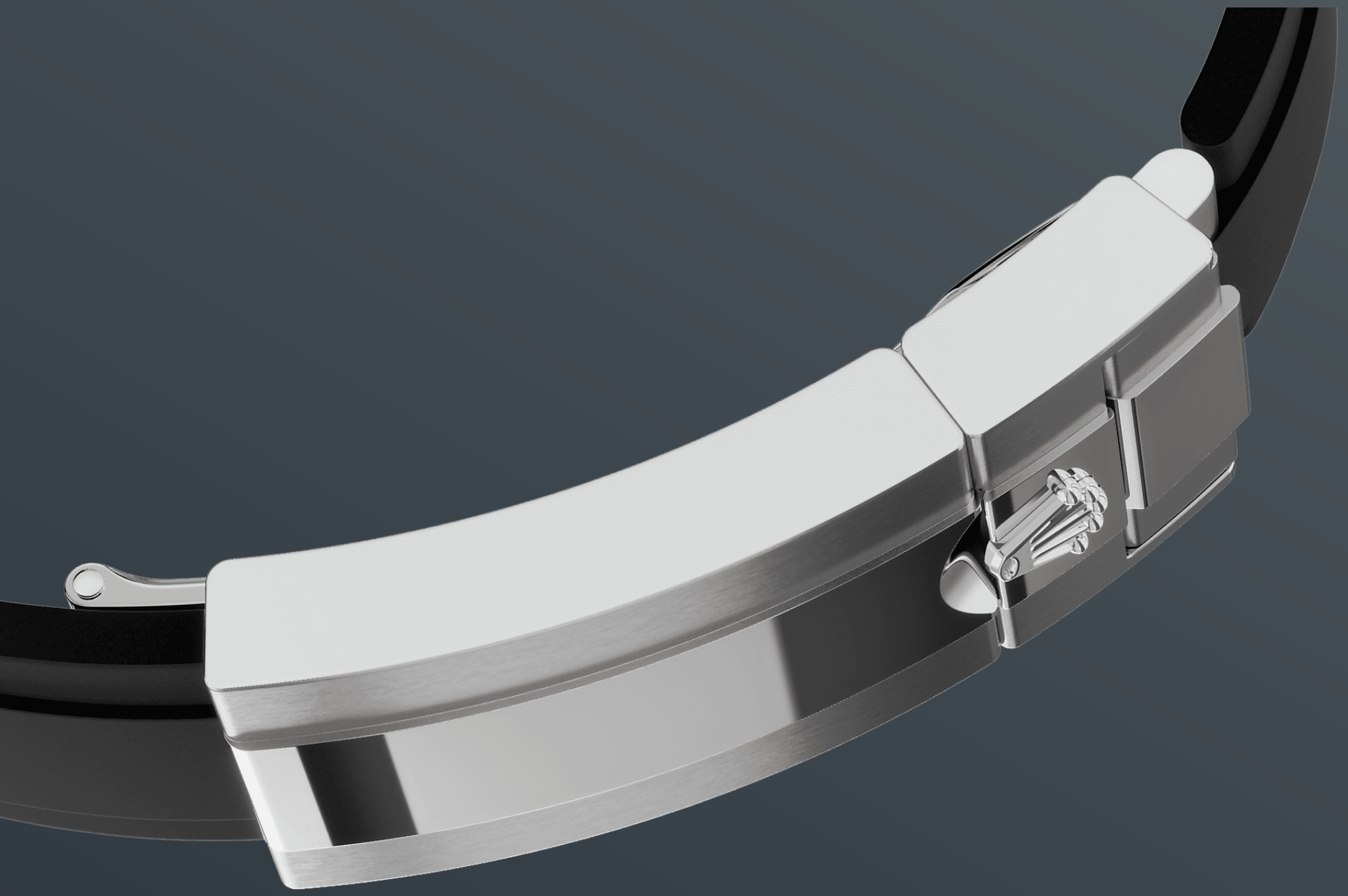




# Cosmograph Daytona

Oyster, 40 mm, white gold

**This Oyster Perpetual  
Cosmograph Daytona in  
18 kt white gold, with a  
steel and bright black  
dial and an Oysterflex  
bracelet, features a  
black Cerachrom bezel  
with tachymetric scale.**



THE OYSTERFLEX BRACELET

## Highly resistant and durable

The 18 kt gold versions of the Cosmograph Daytona with a Cerachrom bezel are available with an Oysterflex bracelet. Developed by Rolex and patented, it singularly combines the robustness of a metal bracelet with the comfort of an elastomer bracelet.

It is made up of two flexible curved metal blades – one in each bracelet section – overmoulded with high-performance black elastomer. For optimum

comfort, the Oysterflex bracelet is equipped with cushions on its inner sides and an Oysterlock safety clasp to prevent accidental opening. Its length may be adjusted via the ingenious Rolex Glidelock extension system.



18 KT WHITE GOLD

## Commitment to **excellence**

By operating its own exclusive foundry, Rolex has the unrivalled ability to cast the highest quality 18 kt gold alloys. According to the proportion of silver, copper, platinum or palladium added, different types of 18 kt gold are obtained: yellow, pink or white.

They are made with only the purest metals and meticulously inspected in an in-house laboratory with state-of-the-art equipment, before the gold is

formed and shaped with the same painstaking attention to quality. Rolex's commitment to excellence begins at the source.



STEEL AND BRIGHT BLACK DIAL

## With chronograph counters

This model features a steel and bright black dial with snailed counters, 18 kt gold applique hour markers and hands with a Chromalight display, a highly-legible luminescent material.

The dial allows drivers to accurately map out their track times and tactics without fail.



THE TACHYMETRIC SCALE

## High-performance chronograph

A key part of the model's identity is the bezel moulded with a tachymetric scale for measuring average speeds of up to 400 miles or kilometres per hour. Blending high technology with sleek aesthetics, the black bezel is reminiscent of the 1965 model that was fitted with a black Plexiglas bezel insert.

The monobloc Cerachrom bezel in high-tech ceramic offers a number of advantages: it is



corrosion resistant, virtually scratchproof and the colour is unaffected by UV rays. This extremely durable bezel also offers an exceptionally legible tachymetric scale, thanks to the deposition of a thin layer of platinum in the numerals and graduations via a PVD (Physical Vapour Deposition) process. The monobloc Cerachrom bezel is made in a single piece and holds the crystal firmly in place on the middle case, ensuring waterproofness.

# more technical-details

## Cosmograph Daytona

reference 126519LN

### model-case

---

#### type

Oyster, 40 mm, white gold

#### diameter

40 mm

#### material

White gold

#### bezel

Black monobloc Cerachrom bezel in ceramic with moulded tachymetric scale

#### oyster-architecture

Monobloc middle case, screw-down case back and winding crown

#### winding-crown

Screw-down, Triplock triple waterproofness system

#### crystal

Scratch-resistant sapphire

#### water-resistance

Waterproof to 100 metres / 330 feet

### movement

---

#### type

Perpetual, mechanical chronograph, self-winding

#### calibre

4131, manufacture Rolex

#### precision

-2/+2 sec/day, after casing

#### oscillator

Paramagnetic blue Parachrom hairspring. High-performance Paraflex shock absorbers

#### winding

Bidirectional self-winding via Perpetual rotor

**power-reserve**

Approximately 72 hours

**functions**

Centre hour and minute hands, small seconds hand at 6 o'clock. Chronograph via centre seconds hand, 30-minute counter at 3 o'clock and 12-hour counter at 9 o'clock. Stop seconds for exact time setting

## bracelet

---

**type**

Oysterflex

**clasp**

Folding Oysterlock safety clasp with Rolex Glidelock extension system

**bracelet-material**

Flexible metal blades overmoulded with high-performance elastomer

## dial

---

**type**

Steel and bright black

**details**

Highly legible Chromalight display with long-lasting blue luminescence

## certification

---

**type**

Superlative Chronometer (COSC + Rolex certification after casing)

# explore-title

**explore-text**

explore-text-2

