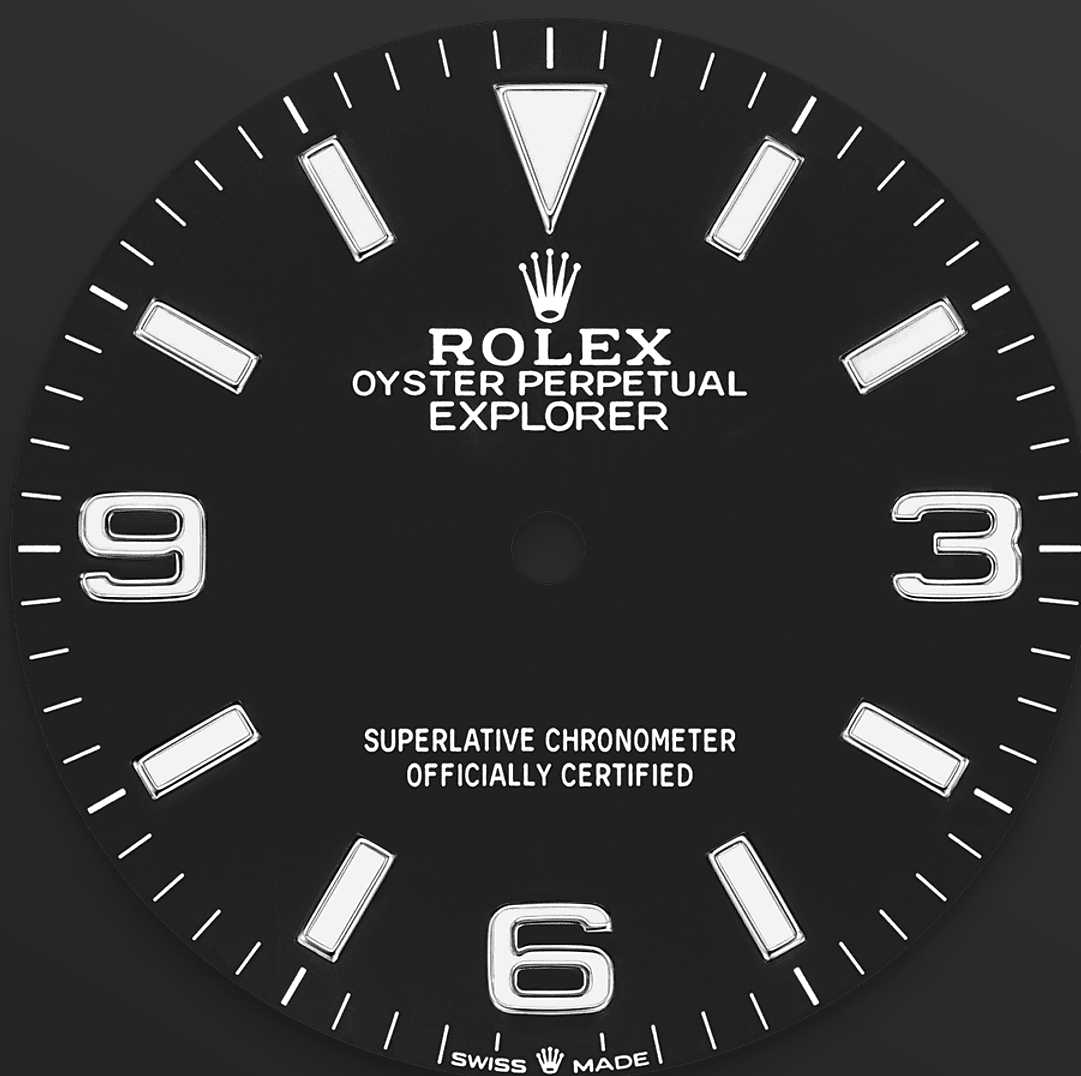




# Explorer 36

Oyster, 36 mm, Oystersteel

**The Oyster Perpetual  
Explorer 36 in  
Oystersteel features a  
distinctive black dial  
with characteristic 3, 6,  
and 9 numerals with a  
Chromalight display.**



BLACK DIAL

## Optimal legibility in any situation

The dial is the distinctive face of a Rolex watch, the feature most responsible for its identity and readability. The Explorer model's characteristic 3, 6 and 9 numerals are filled with a luminescent material emitting a long-lasting blue glow, like the hour markers and hands.

Like all Rolex timepieces, the Explorer 36's dial is designed and manufactured in-house, largely by hand to ensure perfection.



SMOOTH BEZEL

## An established icon

The Oyster Perpetual Explorer 36 imparts a fresh elan to the sober, clean lines that have long established it as an icon.

The smooth bezel in Oystersteel is robust yet elegant, and in perfect harmony with the Explorer's iconic heritage.



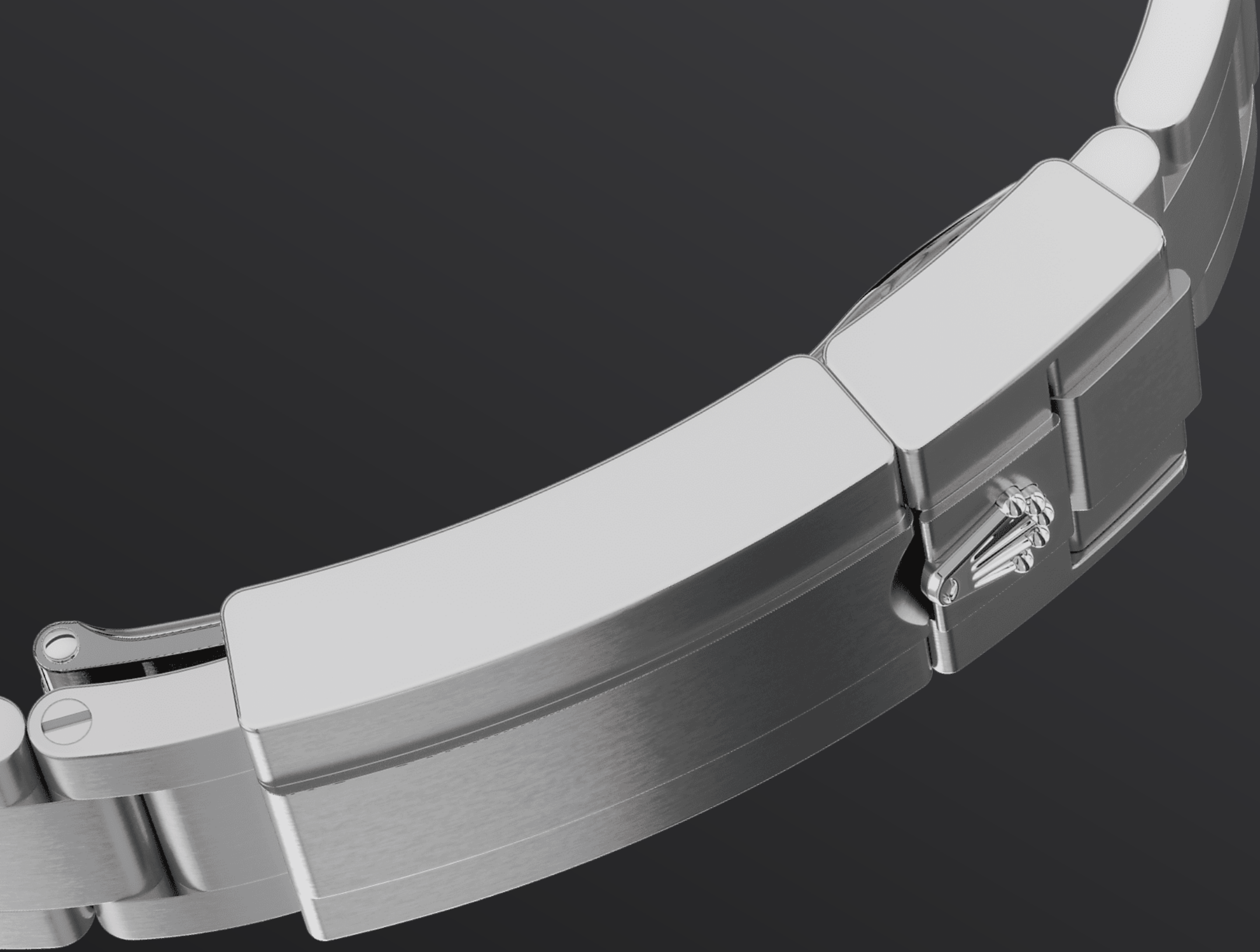
OYSTERSTEEL

## Highly resistant to corrosion

Rolex uses Oystersteel for its steel watch cases. Specially developed by the brand, Oystersteel belongs to the 904L steel family, alloys most commonly used in high-technology and in the aerospace and chemical industries, where maximum resistance to corrosion is essential.

Oystersteel is extremely resistant, offers an exceptional finish once polished and maintains its beauty even in the harshest environments.





THE OYSTER BRACELET

# Alchemy of form and function

The Oyster bracelet is a perfect alchemy of form and function, aesthetics and technology, designed to be both robust and comfortable. It is equipped with an Oysterlock folding clasp, which prevents accidental opening and the Easylink comfort extension link, also exclusive to Rolex.

This ingenious system allows the wearer to increase the bracelet length by approximately 5

mm, providing additional comfort in any circumstance.

# more technical-details

## Explorer

reference 124270

### model-case

---

**type**

Oyster, 36 mm, Oystersteel

**diameter**

36 mm

**material**

Oystersteel

**bezel**

Smooth

**oyster-architecture**

Monobloc middle case, screw-down case back and winding crown

**winding-crown**

Screw-down, Twinlock double waterproofness system

**crystal**

Scratch-resistant sapphire

**water-resistance**

Waterproof to 100 metres / 330 feet

### movement

---

**type**

Perpetual, mechanical, self-winding

**calibre**

3230, Manufacture Rolex

**precision**

-2/+2 sec/day, after casing

**oscillator**

Paramagnetic blue Parachrom hairspring. High-performance Paraflex shock absorbers

**winding**

Bidirectional self-winding via Perpetual rotor



**power-reserve**

Approximately 70 hours

**functions**

Centre hour, minute and seconds hands. Stop-seconds for precise time setting

**bracelet**

---

**type**

Oyster, three-piece solid links

**clasp**

Folding Oysterlock safety clasp with Easylink 5 mm comfort extension link

**bracelet-material**

Oystersteel

**dial**

---

**type**

Black

**details**

Highly legible Chromalight display with long-lasting blue luminescence

**certification**

---

**type**

Superlative Chronometer (COSC + Rolex certification after casing)

# explore-title

**explore-text**

explore-text-2

