



Explorer 40

Oyster, 40 mm, Oystersteel

**The Oyster Perpetual
Explorer 40 in
Oystersteel features a
distinctive black dial
with characteristic 3, 6,
and 9 numerals with a
Chromalight display.**



BLACK DIAL

Optimal legibility in any situation

The dial is the distinctive face of a Rolex watch, the feature most responsible for its identity and readability. The Explorer model's characteristic 3, 6 and 9 numerals are filled with a luminescent material emitting a long-lasting blue glow, like the hour markers and hands.

Like all Rolex timepieces, the Explorer 40's dial is designed and manufactured in-house, largely by hand to ensure perfection.



SMOOTH BEZEL

An established icon

The Oyster Perpetual Explorer 40 imparts a fresh elan to the sober, clean lines that have long established it as an icon.

The smooth bezel in Oystersteel is robust yet elegant, and in perfect harmony with the Explorer's iconic heritage.

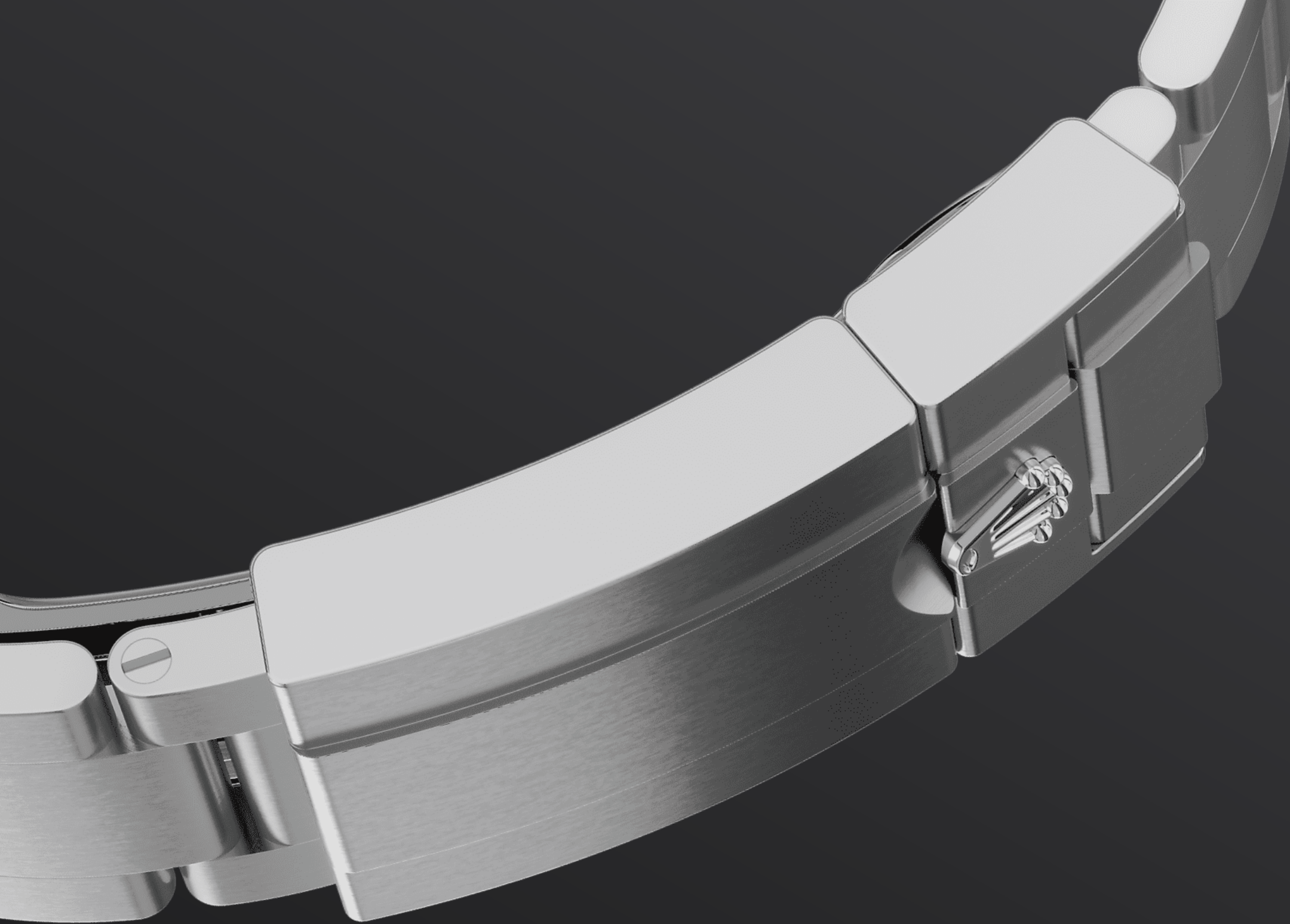


OYSTERSTEEL

Highly resistant to corrosion

Rolex uses Oystersteel for its steel watch cases. Specially developed by the brand, Oystersteel belongs to the 904L steel family, alloys most commonly used in high-technology and in the aerospace and chemical industries, where maximum resistance to corrosion is essential.

Oystersteel is extremely resistant, offers an exceptional finish once polished and maintains its beauty even in the harshest environments.



THE OYSTER BRACELET

Alchemy of form and function

The Oyster bracelet is a perfect alchemy of form and function, aesthetics and technology, designed to be both robust and comfortable. It is equipped with an Oysterlock folding clasp, which prevents accidental opening and the Easylink comfort extension link, also exclusive to Rolex.

This ingenious system allows the wearer to increase the bracelet length by approximately 5

mm, providing additional comfort in any circumstance.

more technical-details

Explorer

reference 224270

model-case

type

Oyster, 40 mm, Oystersteel

diameter

40 mm

material

Oystersteel

bezel

Smooth

oyster-architecture

Monobloc middle case, screw-down case back and winding crown

winding-crown

Screw-down, Twinlock double waterproofness system

crystal

Scratch-resistant sapphire

water-resistance

Waterproof to 100 metres / 330 feet

movement

type

Perpetual, mechanical, self-winding

calibre

3230, Manufacture Rolex

precision

-2/+2 sec/day, after casing

oscillator

Paramagnetic blue Parachrom hairspring. High-performance Paraflex shock absorbers

winding

Bidirectional self-winding via Perpetual rotor

power-reserve

Approximately 70 hours

functions

Centre hour, minute and seconds hands. Stop-seconds for precise time setting

bracelet

type

Oyster, three-piece solid links

clasp

Folding Oysterlock safety clasp with Easylink 5 mm comfort extension link

bracelet-material

Oystersteel

dial

type

Black

details

Highly legible Chromalight display with long-lasting blue luminescence

certification

type

Superlative Chronometer (COSC + Rolex certification after casing)

explore-title

explore-text

explore-text-2

