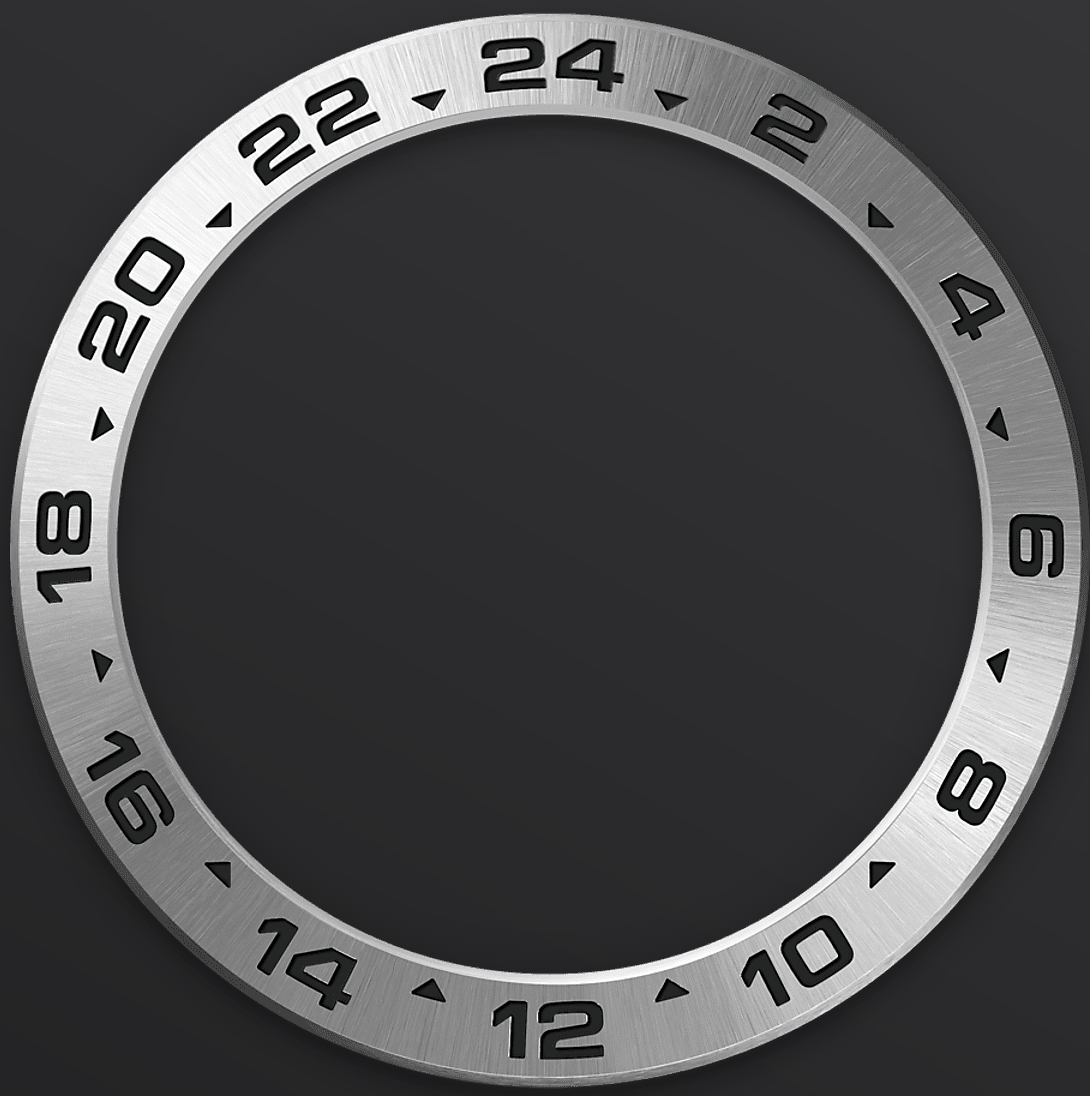




# Explorer II

Oyster, 42 mm, Oystersteel

**This Oyster Perpetual Explorer II in Oystersteel with an Oyster bracelet features a black dial with an arrow-shaped 24-hour hand and hour markers with a Chromalight display.**



## 24-HOUR BEZEL

# Reliability in the toughest conditions

The Explorer II is equipped with an additional 24-hour display; a dedicated hand circles the dial in 24 hours rather than the usual 12, pointing to a fixed bezel with 24 hour graduations.

This function enables the wearer to distinguish the hours of the day from the hours of the night, an essential feature for those who venture into environments where darkness reigns supreme –

such as in the depths of caves, or where the sun never sets – like the polar regions in summer.



BLACK DIAL

## Distinguishing day from night

The Explorer II features a date display, an additional orange 24-hour hand and a fixed bezel with 24-hour graduations, enabling day to be distinguished from night.

It became the watch of choice for speleologists, volcanologists and polar explorers. Its hour markers and hands feature a highly-legible Chromalight display with long-lasting blue luminescence.



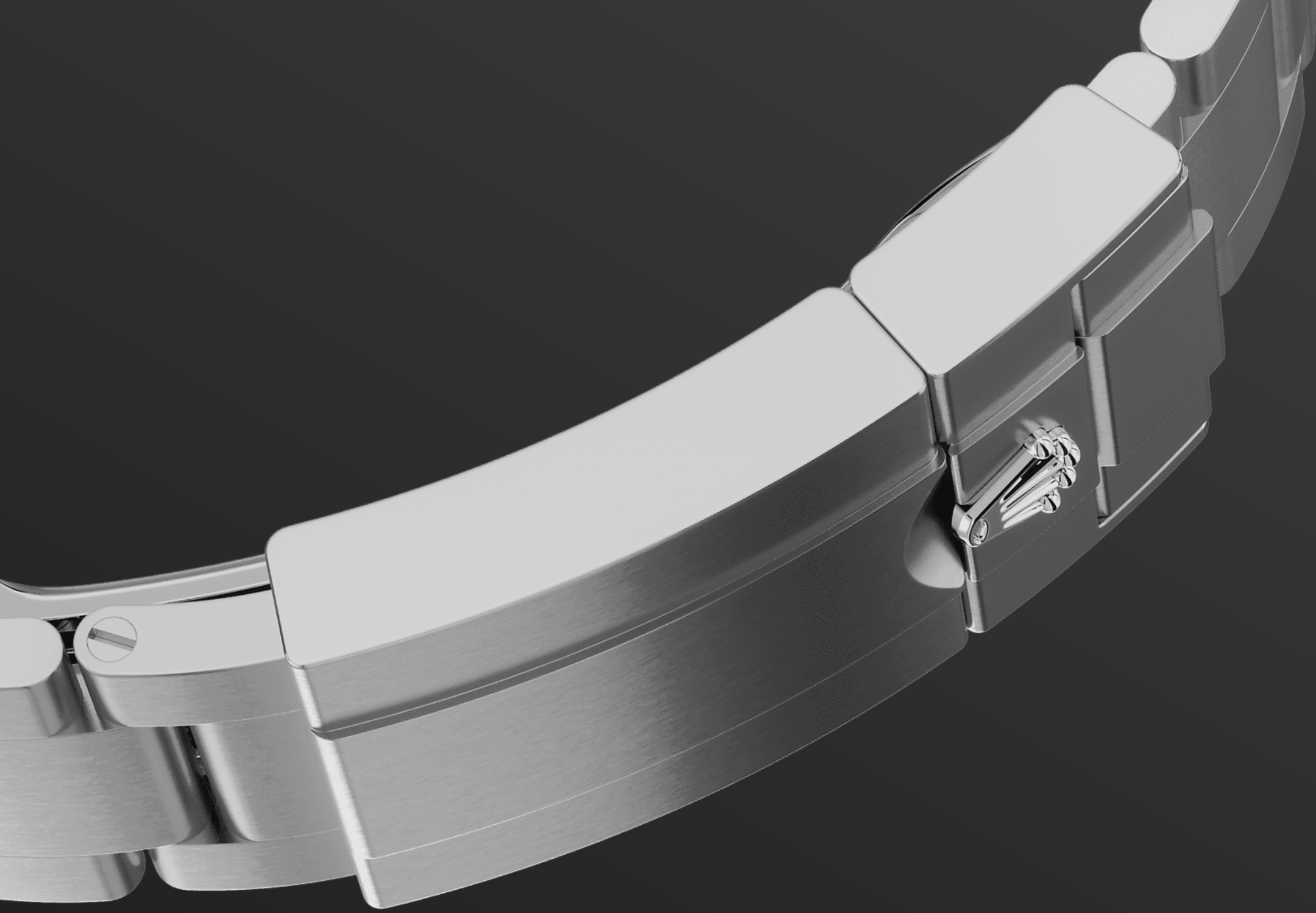


OYSTERSTEEL

## Highly resistant to **corrosion**

Rolex uses Oystersteel for its steel watch cases. Specially developed by the brand, Oystersteel belongs to the 904L steel family, alloys most commonly used in high-technology and in the aerospace and chemical industries, where maximum resistance to corrosion is essential.

Oystersteel is extremely resistant, offers an exceptional finish once polished and maintains its beauty even in the harshest environments.



THE OYSTER BRACELET

# Alchemy of form and function

The Oyster bracelet is a perfect alchemy of form and function, aesthetics and technology, designed to be both robust and comfortable. It is equipped with an Oysterlock folding clasp, which prevents accidental opening and the Easylink comfort extension link, also exclusive to Rolex.

This ingenious system allows the wearer to increase the bracelet length by approximately 5

mm, providing additional comfort in any circumstance.



# more technical-details

## Explorer

reference 226570

### model-case

---

**type**

Oyster, 42 mm, Oystersteel

**diameter**

42 mm

**material**

Oystersteel

**bezel**

Fixed, 24-hour graduated

**oyster-architecture**

Monobloc middle case, screw-down case back and winding crown

**winding-crown**

Screw-down, Twinlock double waterproofness system

**crystal**

Scratch-resistant sapphire, Cyclops lens over the date

**water-resistance**

Waterproof to 100 metres / 330 feet

### movement

---

**type**

Perpetual, mechanical, self-winding, GMT function

**calibre**

3285, Manufacture Rolex

**precision**

-2/+2 sec/day, after casing

**oscillator**

Paramagnetic blue Parachrom hairspring. High-performance Paraflex shock absorbers

**winding**

Bidirectional self-winding via  
Perpetual rotor

**power-reserve**

Approximately 70 hours

**functions**

Centre hour, minute and seconds  
hands. 24-hour display. Second  
time zone with independent rapid-  
setting of the hour hand.

Instantaneous date. Stop-seconds  
for precise time setting

**bracelet**

---

**type**

Oyster, three-piece solid links

**clasp**

Folding Oysterlock safety clasp with  
Easylink 5 mm comfort extension  
link

**bracelet-material**

Oystersteel

**dial**

---

**type**

Black

**details**

Highly legible Chromalight display  
with long-lasting blue luminescence

**certification**

---

**type**

Superlative Chronometer (COSC +  
Rolex certification after casing)

# explore-title

**explore-text**

explore-text-2

