



Lady-Datejust

Oyster, 28 mm, Oystersteel and yellow gold

**This Oyster Perpetual
Lady-Datejust in
Oystersteel and yellow
gold features a
champagne colour,
diamond-set dial and an
Oyster bracelet.**



CHAMPAGNE-COLOUR DIAL

A watchmaking technique

This dial features diamonds in 18 kt gold settings. The sunray finish creates delicate light reflections on many dials in the Oyster Perpetual collection. It is obtained using masterful brushing techniques that create grooves running outwards from the centre of the dial.

Light is diffused consistently along each engraving, creating a characteristic subtle glow that moves depending on the position of the wrist.



FLUTED BEZEL

A Rolex signature

The Rolex fluted bezel is a mark of distinction. Originally, the fluting of the Oyster bezel had a functional purpose: it served to screw the bezel onto the case helping to ensure the waterproofness of the watch.

It was therefore identical to the fluting on the case back, which was also screwed onto the case for waterproofness, using specific Rolex tools. Over time, the fluting became an aesthetic element, a genuine Rolex signature feature. Today the fluted

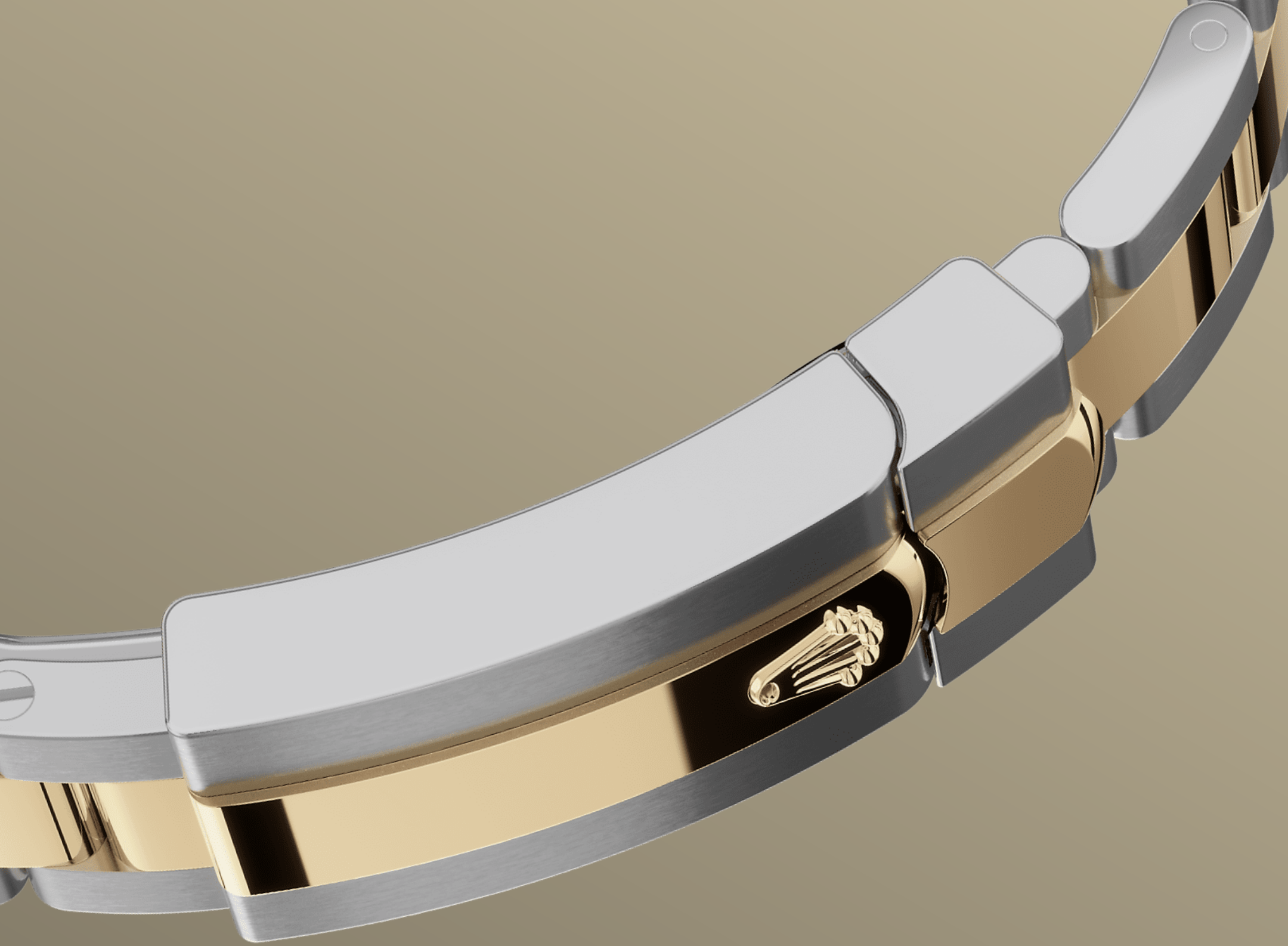


YELLOW ROLESOR

A meeting of two metals

Gold is coveted for its lustre and nobility. Steel reinforces strength and reliability. Together, they harmoniously combine the best of their properties.

A true Rolex signature, Rolesor has featured on Rolex models since the early 1930s, and was trademarked as a name in 1933. It is one of the prominent pillars of the Oyster Perpetual collection.



THE OYSTER BRACELET

Alchemy of form and function

The Oyster bracelet is a perfect alchemy of form and function, aesthetics and technology, designed to be both robust and comfortable.

It is equipped with an Oysterclasp and the Easylink comfort extension link, also exclusive to Rolex. This ingenious system allows the wearer to increase the bracelet length by approximately 5 mm, providing additional comfort in any circumstance.

more technical-details

Lady-Datejust

reference 279173

model-case

type

Oyster, 28 mm, Oystersteel and yellow gold

diameter

28 mm

material

Yellow Rolesor

bezel

Fluted

oyster-architecture

Monobloc middle case, screw-down case back and winding crown

winding-crown

Screw-down, Twinlock double waterproofness system

crystal

Scratch-resistant sapphire, Cyclops lens over the date

water-resistance

Waterproof to 100 metres / 330 feet

movement

type

Perpetual, mechanical, self-winding

calibre

2236, Manufacture Rolex

precision

-2/+2 sec/day, after casing

oscillator

Syloxi hairspring in silicon with patented geometry. High-performance Paraflex shock absorbers

winding

Bidirectional self-winding via
Perpetual rotor

power-reserve

Approximately 55 hours

functions

Centre hour, minute and seconds
hands. Instantaneous date with
rapid setting. Stop-seconds for
precise time setting

bracelet

type

Oyster, three-piece solid links

clasp

Folding Oysterclasp with Easylink 5
mm comfort extension link

bracelet-material

Yellow Rolesor - combination of
Oystersteel and yellow gold

dial

type

Champagne-colour set with
diamonds

gem-setting

Diamonds in 18 kt gold settings

certification

type

Superlative Chronometer (COSC +
Rolex certification after casing)

explore-title

explore-text

explore-text-2

