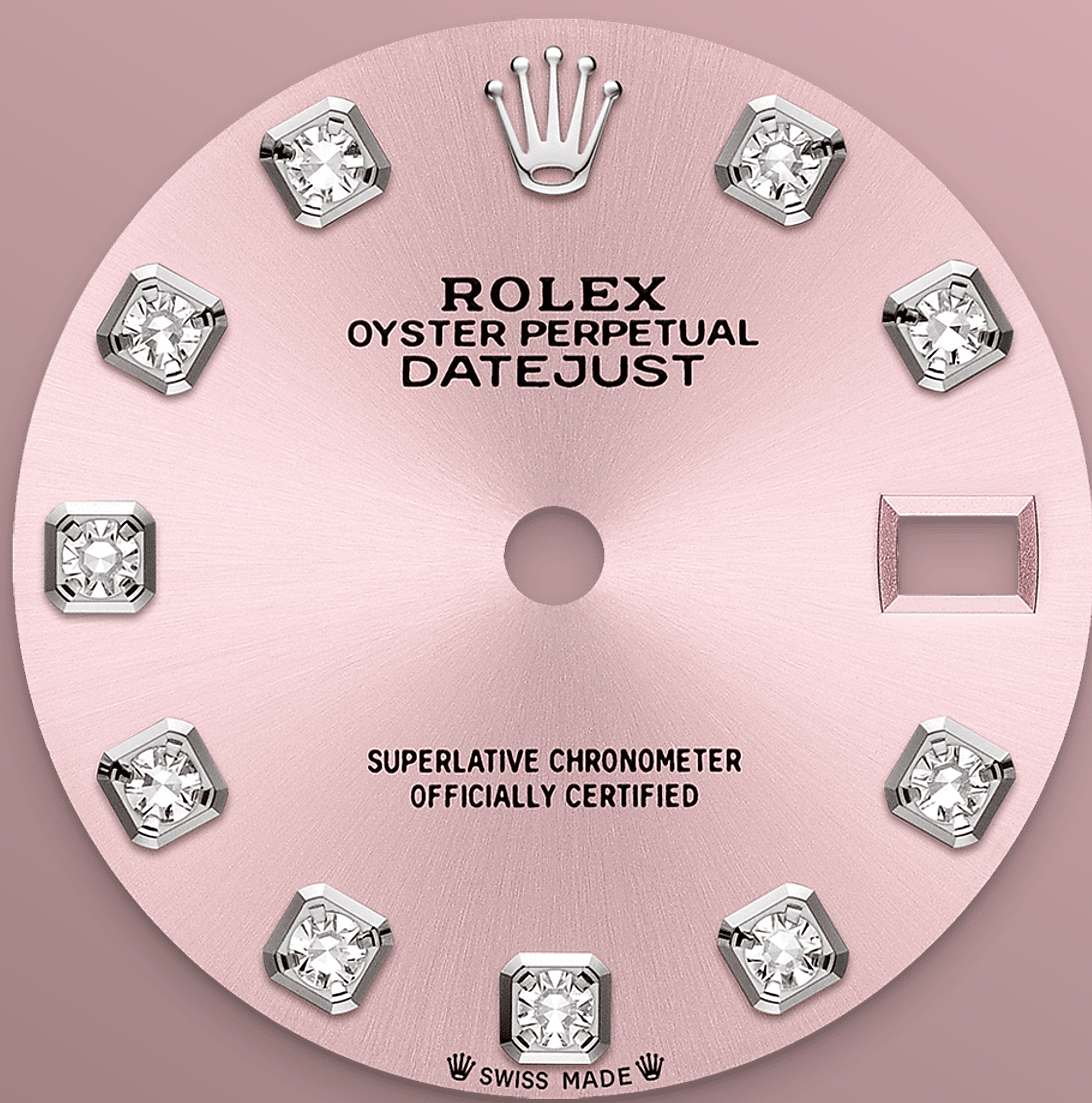




# Lady-Datejust

Oyster, 28 mm, Oystersteel, white gold and diamonds

**This Oyster Perpetual  
Lady-Datejust in  
Oystersteel and white  
gold features a pink,  
diamond-set dial and an  
Oyster bracelet.**



PINK DIAL

## A watchmaking technique

This dial features diamonds in 18 kt gold settings. The sunray finish creates delicate light reflections on many dials in the Oyster Perpetual collection. It is obtained using masterful brushing techniques that create grooves running outwards from the centre of the dial.

Light is diffused consistently along each engraving, creating a characteristic subtle glow that moves depending on the position of the wrist.







## DIAMOND-SET BEZEL

# A sparkling symphony

Gem-setters, like sculptors, finely carve the precious metal to hand-shape the seat in which each gemstone will be perfectly lodged. With the art and craft of a jeweller, the stone is placed and meticulously aligned with the others, then firmly secured in its gold or platinum setting.

Besides the intrinsic quality of the stones, several other criteria contribute to the beauty of Rolex gem-setting: the precise alignment of the height of the gems, their orientation and position, the regularity, strength and proportions of the setting





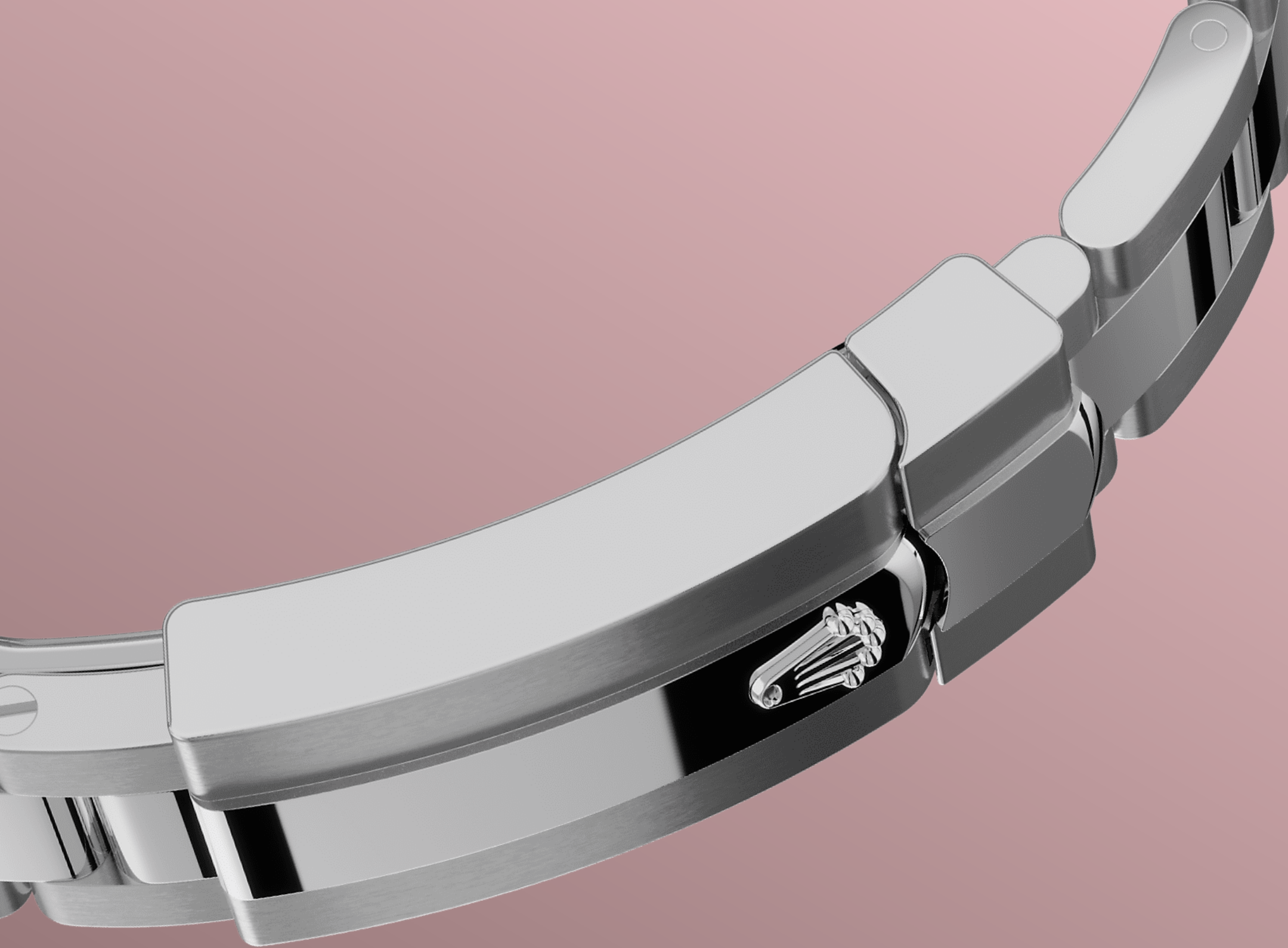
WHITE ROLESOR

## A meeting of two metals

Gold is coveted for its lustre and nobility. Steel reinforces strength and reliability. Together, they harmoniously combine the best of their properties.

A true Rolex signature, Rolesor has featured on Rolex models since the early 1930s, and was trademarked as a name in 1933. It is one of the prominent pillars of the Oyster Perpetual collection.





THE OYSTER BRACELET

# Alchemy of form and function

The Oyster bracelet is a perfect alchemy of form and function, aesthetics and technology, designed to be both robust and comfortable.

It is equipped with an Oysterclasp and the Easylink comfort extension link, also exclusive to Rolex. This ingenious system allows the wearer to increase the bracelet length by approximately 5 mm, providing additional comfort in any circumstance.



# more technical-details

## Lady-Datejust

reference 279384RBR

### model-case

---

**type**

Oyster, 28 mm, Oystersteel, white gold and diamonds

**diameter**

28 mm

**material**

White Rolesor

**bezel**

Set with diamonds

**oyster-architecture**

Monobloc middle case, screw-down case back and winding crown

**winding-crown**

Screw-down, Twinlock double waterproofness system

**crystal**

Scratch-resistant sapphire, Cyclops lens over the date

**water-resistance**

Waterproof to 100 metres / 330 feet

### movement

---

**type**

Perpetual, mechanical, self-winding

**calibre**

2236, Manufacture Rolex

**precision**

-2/+2 sec/day, after casing

**oscillator**

Syloxi hairspring in silicon with patented geometry. High-performance Paraflex shock absorbers

**winding**

Bidirectional self-winding via  
Perpetual rotor

**power-reserve**

Approximately 55 hours

**functions**

Centre hour, minute and seconds  
hands. Instantaneous date with  
rapid setting. Stop-seconds for  
precise time setting

**bracelet**

---

**type**

Oyster, three-piece solid links

**clasp**

Folding Oysterclasp with Easylink 5  
mm comfort extension link

**bracelet-material**

Oystersteel

**dial**

---

**type**

Pink set with diamonds

**gem-setting**

Diamonds in 18 kt gold settings

**certification**

---

**type**

Superlative Chronometer (COSC +  
Rolex certification after casing)

# explore-title

**explore-text**

explore-text-2

