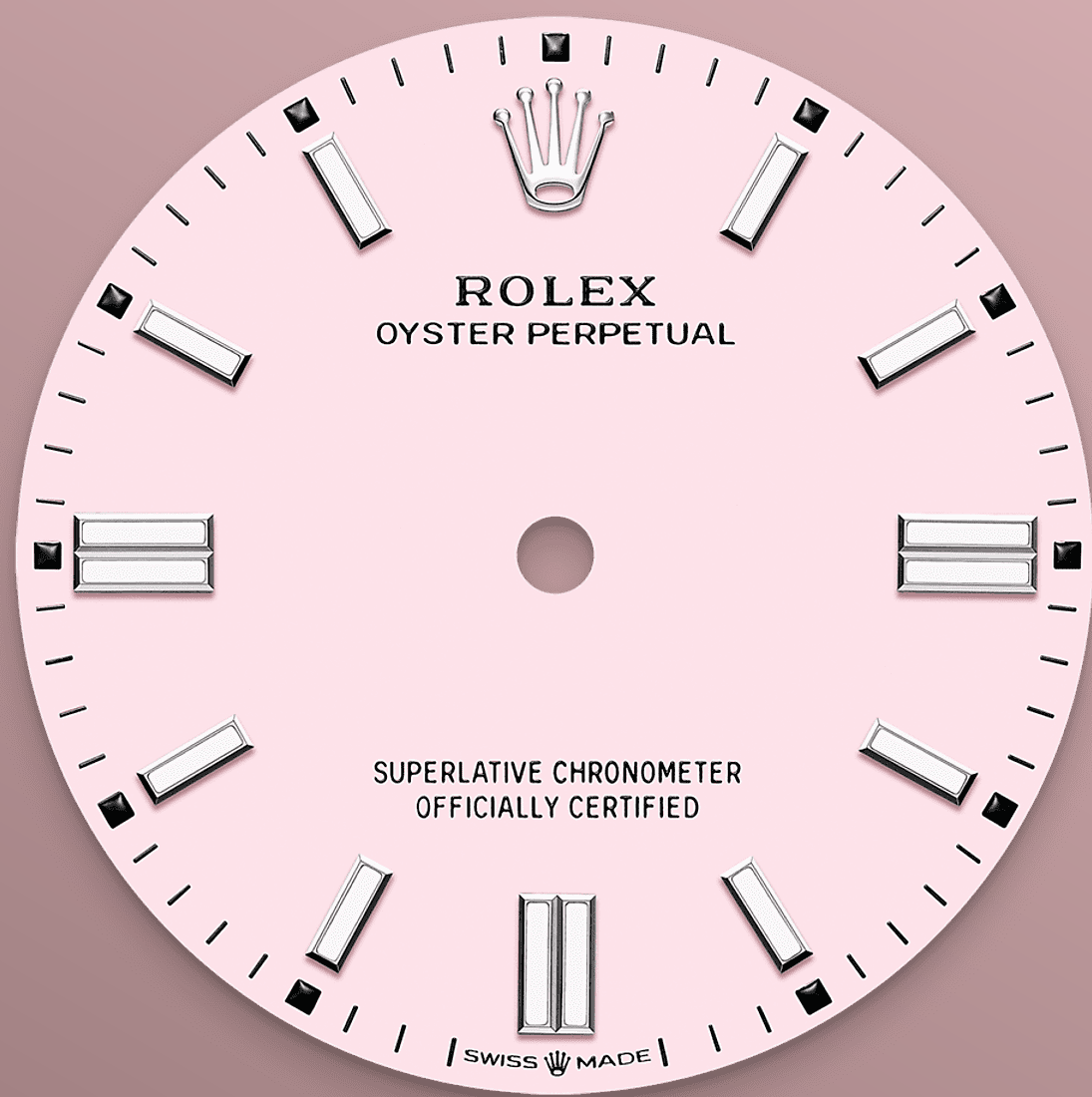




# Oyster Perpetual 36

Oyster, 36 mm, Oystersteel

**The Oyster Perpetual 36  
with a candy pink dial  
and an Oyster bracelet.**



CANDY PINK DIAL

## Craftsmanship rhymes with high technology

This bold, vivid tone is thanks to exceptional in-house expertise at Rolex, where craftsmanship rhymes with high technology. The colours created for the Oyster Perpetual range start life as a lacquer, which must be meticulously applied in a controlled-atmosphere environment to avoid dust and other contamination.

The brass plate of the dial base receives layer upon layer of lacquer, six in all, to form a regular,





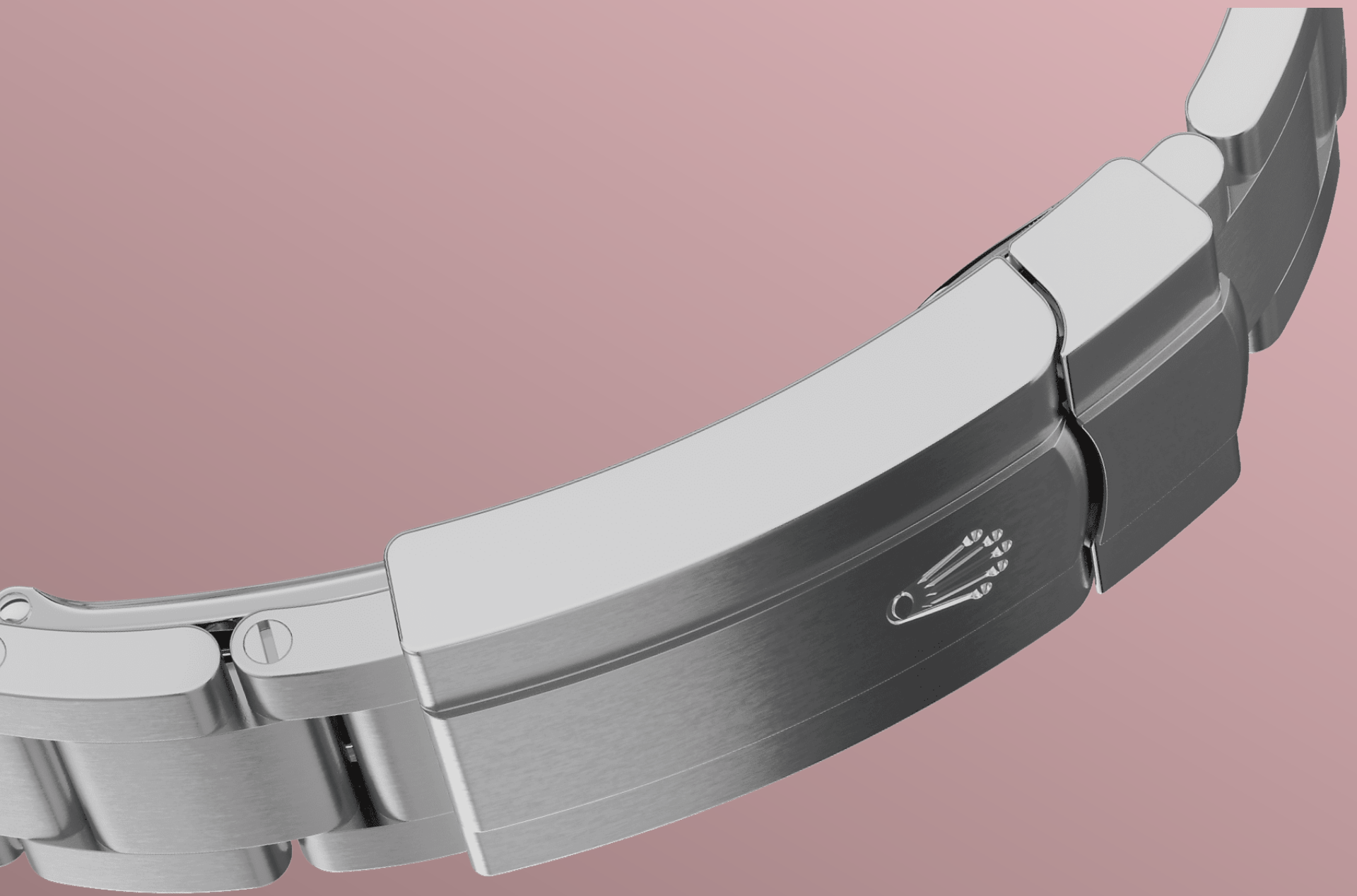


OYSTERSTEEL

## Highly resistant to corrosion

Rolex uses Oystersteel for its steel watch cases. Specially developed by the brand, Oystersteel belongs to the 904L steel family, alloys most commonly used in high-technology and in the aerospace and chemical industries, where maximum resistance to corrosion is essential.

Oystersteel is extremely resistant, offers an exceptional finish once polished and maintains its beauty even in the harshest environments.



THE OYSTER BRACELET

## Alchemy of form and function

The Oyster bracelet is a perfect alchemy of form and function, aesthetics and technology.

First introduced in the late 1930s, this particularly robust and comfortable metal bracelet with its broad, flat three-piece links remains the most universal bracelet in the Oyster collection. For the Oyster Perpetual models the Oyster bracelet is fitted with an Oysterclasp.

3230 MOVEMENT

# Superlative performance

The Oyster Perpetual 36 is equipped with calibre 3230, a movement entirely developed and manufactured by Rolex, launched by the brand in 2020.

At the forefront of watchmaking technology, this self-winding mechanical movement led to the filing of several patents, and offers fundamental gains in terms of precision, power reserve, resistance to shocks and magnetic fields, convenience and

reliability. Calibre 3230 incorporates the patented Chronergy escapement, which combines high energy efficiency with great dependability.



# more technical-details

## Oyster Perpetual

reference 126000

### model-case

---

#### type

Oyster, 36 mm, Oystersteel

#### diameter

36 mm

#### material

Oystersteel

#### bezel

Domed

#### oyster-architecture

Monobloc middle case, screw-down case back and winding crown

#### winding-crown

Screw-down, Twinlock double waterproofness system

#### crystal

Scratch-resistant sapphire

#### water-resistance

Waterproof to 100 metres / 330 feet

### movement

---

#### type

Perpetual, mechanical, self-winding

#### calibre

3230, Manufacture Rolex

#### precision

-2/+2 sec/day, after casing

#### oscillator

Paramagnetic blue Parachrom hairspring. High-performance Paraflex shock absorbers

#### winding

Bidirectional self-winding via Perpetual rotor

**power-reserve**

Approximately 70 hours

**functions**

Centre hour, minute and seconds hands. Stop-seconds for precise time setting

## bracelet

---

**type**

Oyster, three-piece solid links

**clasp**

Folding Oysterclasp with Easylink 5 mm comfort extension link

**bracelet-material**

Oystersteel

## dial

---

**type**

Candy pink

**details**

Highly legible Chromalight display with long-lasting blue luminescence

## certification

---

**type**

Superlative Chronometer (COSC + Rolex certification after casing)

# explore-title

**explore-text**

explore-text-2

