



# Oyster Perpetual 31

Oyster, 31 mm, Oystersteel

**The Oyster Perpetual 31  
with a turquoise blue,  
Celebration-motif dial  
and an Oyster bracelet.**



TURQUOISE BLUE DIAL

## Celebration motif

Named 'Celebration', this brand-new motif is available for the Oyster Perpetual 31, Oyster Perpetual 36 and Oyster Perpetual 41.

Composed of differently sized bubbles fringed with black, it encapsulates the vivid colours of the lacquered dials introduced in 2020, bringing turquoise blue into play for the background colour, and candy pink, yellow, coral red and green for the bubbles.



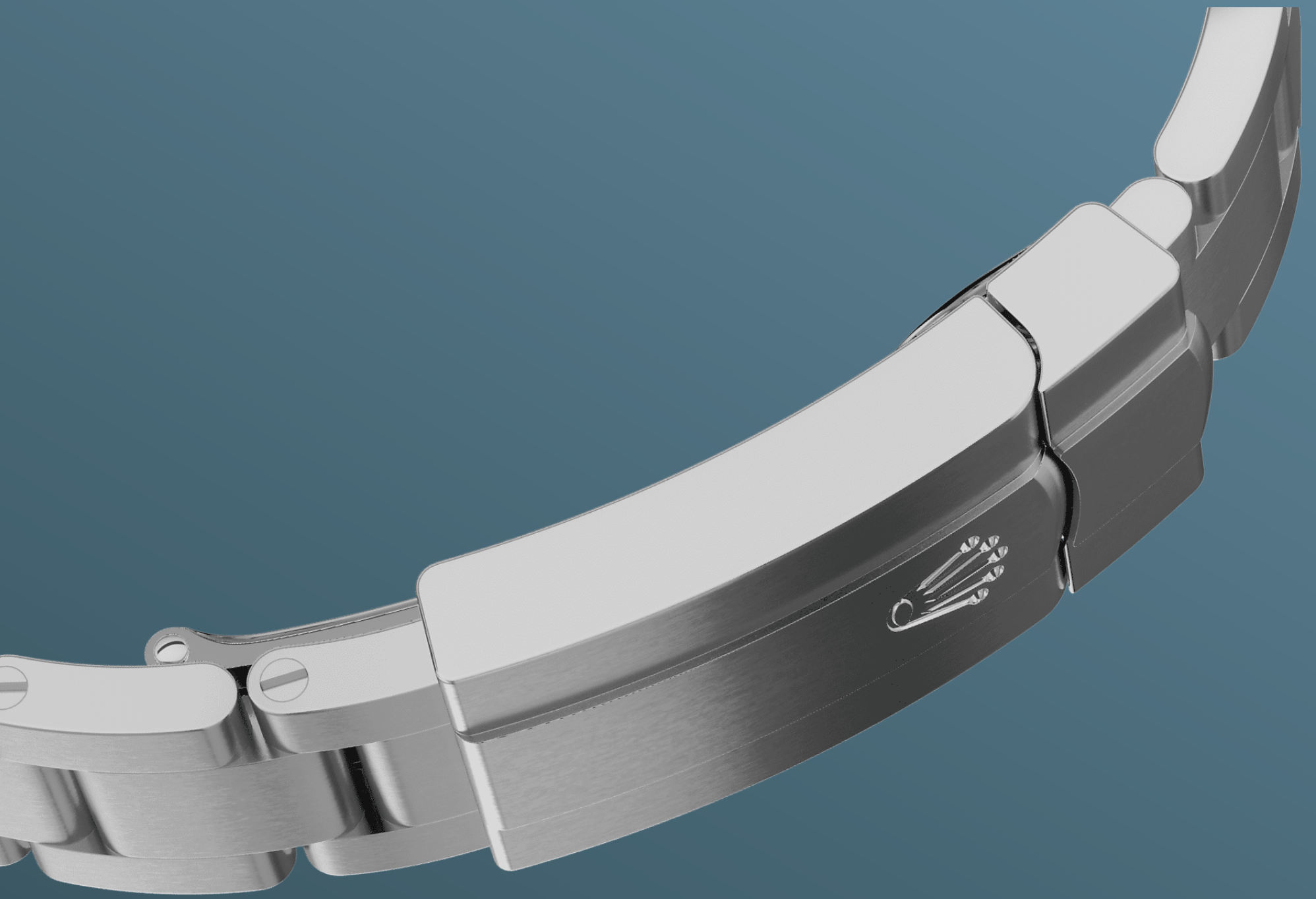


OYSTERSTEEL

## Highly resistant to corrosion

Rolex uses Oystersteel for its steel watch cases. Specially developed by the brand, Oystersteel belongs to the 904L steel family, alloys most commonly used in high-technology and in the aerospace and chemical industries, where maximum resistance to corrosion is essential.

Oystersteel is extremely resistant, offers an exceptional finish once polished and maintains its beauty even in the harshest environments.



THE OYSTER BRACELET

## Alchemy of form and function

The Oyster bracelet is a perfect alchemy of form and function, aesthetics and technology.

First introduced in the late 1930s, this particularly robust and comfortable metal bracelet with its broad, flat three-piece links remains the most universal bracelet in the Oyster collection. For the Oyster Perpetual models the Oyster bracelet is fitted with an Oysterclasp.

2232 MOVEMENT

# Superlative performance

Unveiled in 2020, calibre 2232 is a new-generation self-winding mechanical movement entirely developed and manufactured by Rolex. Fitted with a Syloxi hairspring in silicon, patented, it offers a superlative level of chronometric performance.

Insensitive to magnetic fields, the Syloxi hairspring provides great stability in the face of temperature variations and remains up to 10 times more

precise than a traditional hairspring in case of shocks. Its patented geometry ensures its regularity in any position.

# more technical-details

## Oyster Perpetual

reference 277200

### model-case

---

#### type

Oyster, 31 mm, Oystersteel

#### diameter

31 mm

#### material

Oystersteel

#### bezel

Domed

#### oyster-architecture

Monobloc middle case, screw-down case back and winding crown

#### winding-crown

Screw-down, Twinlock double waterproofness system

#### crystal

Scratch-resistant sapphire

#### water-resistance

Waterproof to 100 metres / 330 feet

### movement

---

#### type

Perpetual, mechanical, self-winding

#### calibre

2232, Manufacture Rolex

#### precision

-2/+2 sec/day, after casing

#### oscillator

Syloxi hairspring in silicon with patented geometry. High-performance Paraflex shock absorbers

#### winding

Bidirectional self-winding via Perpetual rotor



**power-reserve**

Approximately 55 hours

**functions**

Centre hour, minute and seconds hands. Stop-seconds for precise time setting

**bracelet**

---

**type**

Oyster, three-piece solid links

**clasp**

Folding Oysterclasp with Easylink 5 mm comfort extension link

**bracelet-material**

Oystersteel

**dial**

---

**type**

Turquoise blue, Celebration motif

**details**

Highly legible Chromalight display with long-lasting blue luminescence

**certification**

---

**type**

Superlative Chronometer (COSC + Rolex certification after casing)

# explore-title

**explore-text**

explore-text-2

