



Sky-Dweller

Oyster, 42 mm, Oystersteel and white gold

**The Oyster Perpetual
Sky-Dweller in
Oystersteel and white
gold with a mint green
dial and an Oyster
bracelet.**



MINT GREEN DIAL

A striking characteristic

A fixed inverted red triangle on the dial points to the chosen reference time – the time at home or at the traveller's usual workplace – on the off-centre 24-hour disc. At a glance, this 24-hour display clearly distinguishes daytime hours from night-time hours in the other time zone.

A deep red rectangle in one of the 12 windows around the dial indicates the current month, a striking characteristic of the Saros annual calendar. This ingenious mechanism simplifies life for the wearer of the watch, who no longer needs

to think about adjusting the date at the end of a 30-day month. The annual calendar displays the correct date through the year. Only one adjustment is needed – on 1 March (February having only 28 or 29 days). The date is connected to local time and automatically changes according to the traveller's local time zone.



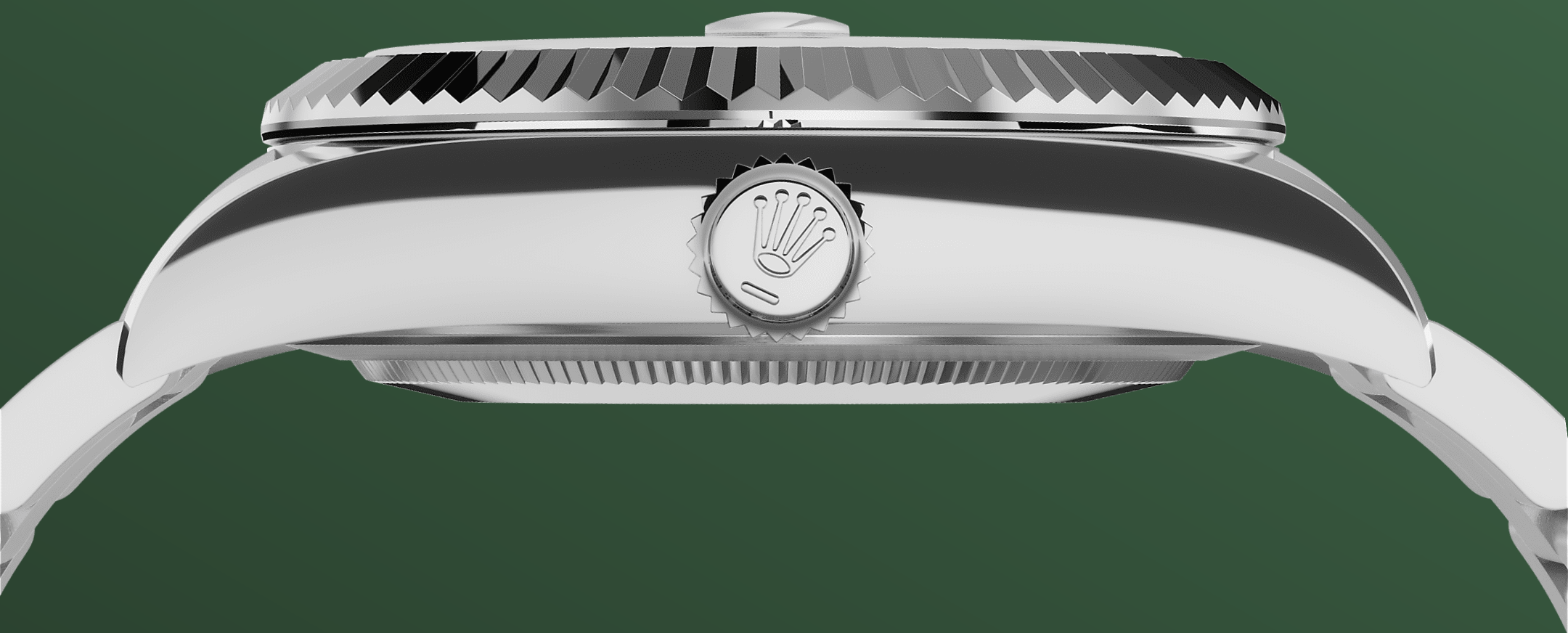
THE FLUTED BEZEL

A Rolex signature

The Rolex fluted bezel is a mark of distinction. Originally, the fluting of the Oyster bezel had a functional purpose: it served to screw the bezel onto the case, helping to ensure the waterproofness of the watch.

It was therefore identical to the fluting on the case back, which was also screwed onto the case for waterproofness, using specific Rolex tools. Over time, the fluting became an aesthetic element, a genuine Rolex signature feature. Today the fluted bezel is a mark of distinction, always in gold. The

Sky-Dweller is equipped with a mechanism of interaction between the rotatable bezel, the winding crown and the movement: the Ring Command system, which allows the user to select the watch's functions one-by-one and to set them easily, quickly and securely.

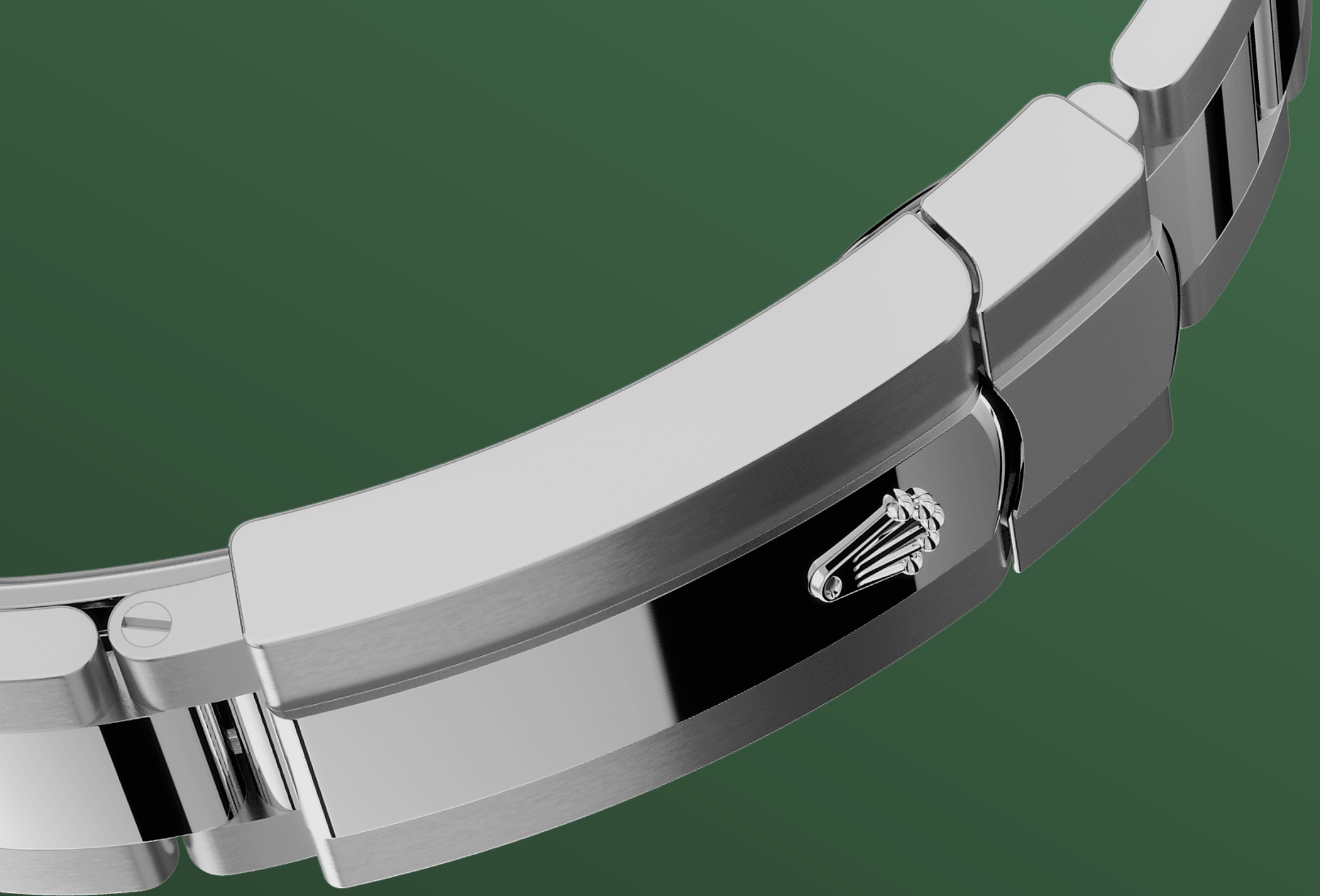


WHITE ROLESOR

A meeting of two metals

Gold is coveted for its lustre and nobility. Steel reinforces strength and reliability. Together, they harmoniously combine the best of their properties.

A true Rolex signature, Rolesor has featured on Rolex models since the early 1930s, and was trademarked as a name in 1933. It is one of the prominent pillars of the Oyster Perpetual collection.



THE OYSTER BRACELET

Alchemy of form and function

The Sky-Dweller is fitted on a solid-link Oyster bracelet in Oystersteel, in the case of the white Rolesor version, or, for the yellow Rolesor version, an Oyster bracelet combining Oystersteel and yellow gold.

The Oyster bracelet benefits from the new concealed attachment system beneath the bezel which ensures seamless visual continuity between the bracelet and case. It is equipped with a folding

Oysterclasp and also features the ingenious patented Easylink rapid extension system that allows the wearer to easily increase the bracelet length by approximately 5 mm, for additional comfort in any circumstance.

more technical-details

Sky-Dweller

reference 336934

model-case

type

Oyster, 42 mm, Oystersteel and white gold

diameter

42 mm

material

White Rolesor

bezel

Fluted, bidirectional rotatable Rolex Ring Command

oyster-architecture

Monobloc middle case, screw-down case back and winding crown

winding-crown

Screw-down, Twinlock double waterproofness system

crystal

Scratch-resistant sapphire, Cyclops lens over the date

water-resistance

Waterproof to 100 metres / 330 feet

movement

type

Perpetual, mechanical, self-winding, dual time zones, annual calendar

calibre

9002, manufacture Rolex

precision

-2/+2 sec/day, after casing

oscillator

Paramagnetic blue Parachrom hairspring. High-performance Paraflex shock absorbers

winding

Bidirectional self-winding via Perpetual rotor

power-reserve

Approximately 72 hours

functions

Centre hour, minute and seconds hands. 24-hour display on off-centre disc. Second time zone. Instantaneous annual calendar at 3 o'clock and rapid-setting of the date. Month display via 12 apertures around the circumference of the dial. Stop-seconds for precise time setting

bracelet

type

Oyster, three-piece solid links

clasp

Folding Oysterclasp with Easylink 5 mm comfort extension link

bracelet-material

Oystersteel

dial

type

Mint green

details

Highly legible Chromalight display with long-lasting blue luminescence

certification

type

Superlative Chronometer (COSC + Rolex certification after casing)

explore-title

explore-text

explore-text-2

