



◇ ◇ ◇ ◇ ◇ ◇ ◇ ◇ ◇ ◇ ◇ ◇

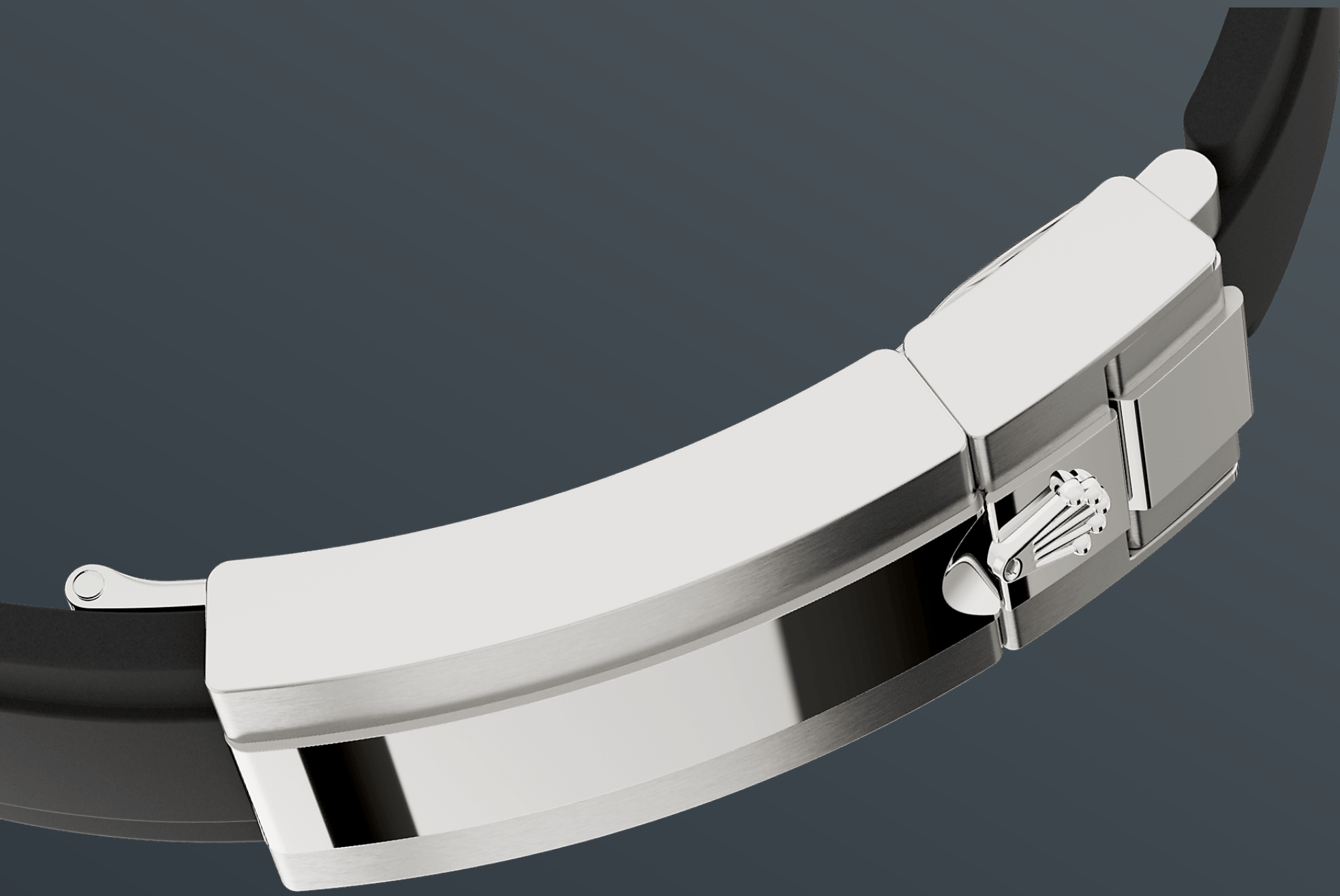
◇ **18K** ◇ ◇ ◇ ◇ ◇ ◇ ◇ ◇ ◇ ◇ ◇ ◇

◇ ◇ ◇ ◇ ◇ ◇ ◇ ◇ ◇ ◇ ◇ ◇ ◇ ◇

◇ ◇ ◇ ◇ ◇ ◇ ◇ **Oysterflex**

◇ ◇ ◇ ◇ ◇ ◇ ◇ ◇ ◇ ◇ ◇ ◇

◇ ◇



OYSTERFLEX




Cerachrom 18K

Oysterflex

Oysterflex

Rolex Glidelock



18K    



                              18K      

18K              

more technical-details



reference 126539TBR

model-case

type

40

diameter

40

material

bezel

oyster-architecture

winding-crown

crystal

water-resistance

100/330

movement

type

calibre

4131

precision

oscillator

Parachrom

Paraflex

winding

power-reserve

72

bracelet

type

Oysterflex

clasp

Rolex Glidelock

bracelet-material

dial

type

details

Chromalight

certification

type

COSC +

explore-title

explore-text

explore-text-2

