



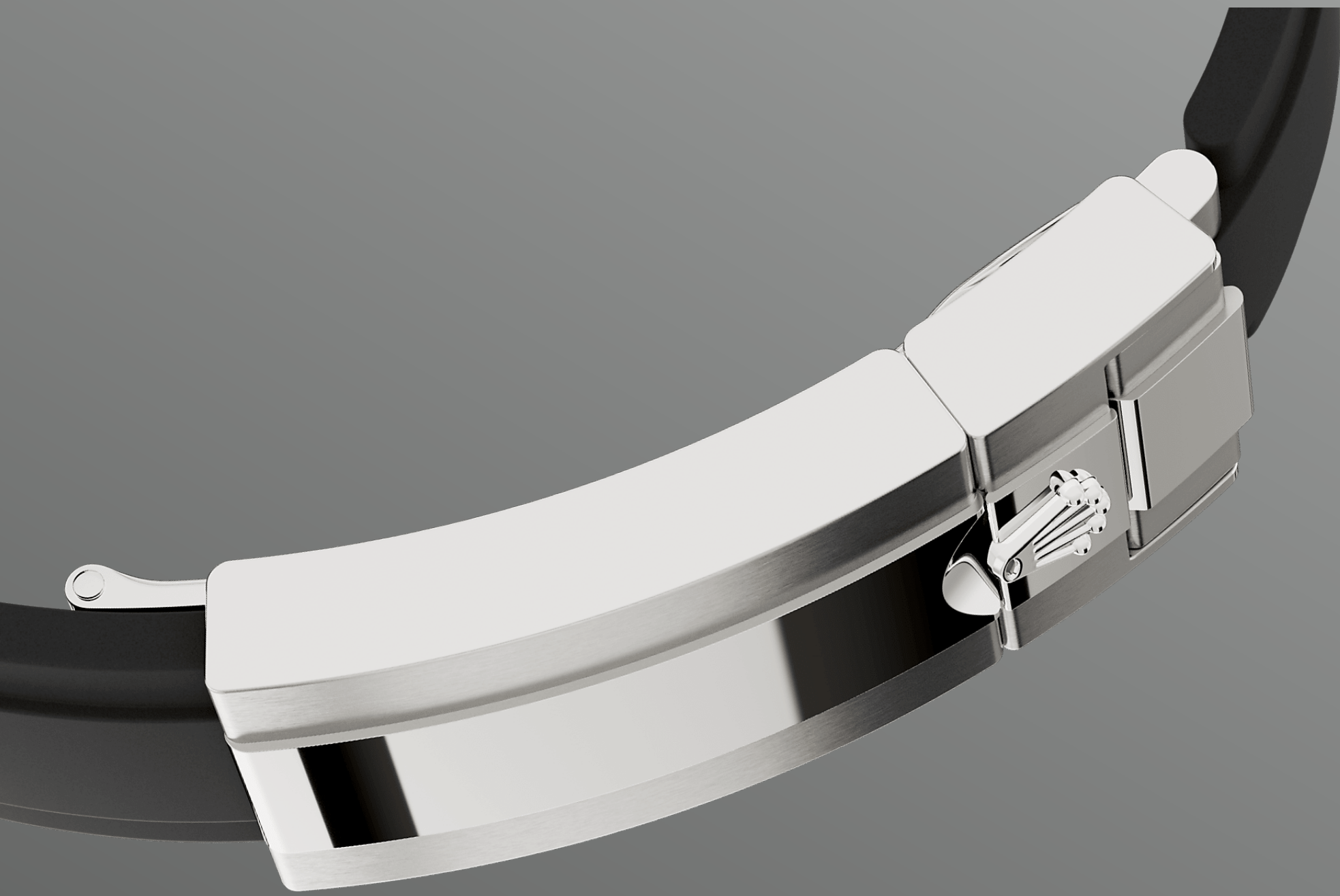
◆ ◆ ◆ ◆ ◆ ◆ ◆ ◆ ◆ ◆ ◆ ◆ ◆

◆ **18K** ◆ ◆ ◆ ◆ ◆ ◆ ◆ ◆ ◆ ◆ ◆ ◆ ◆

◆ ◆ ◆ ◆ ◆ ◆ ◆ ◆ ◆ ◆ ◆ ◆ ◆

**Oysterflex** ◆ ◆ ◆ ◆ ◆ ◆ ◆

◆ ◆



OYSTERFLEX  



  Cerachrom                             

Oysterflex                                

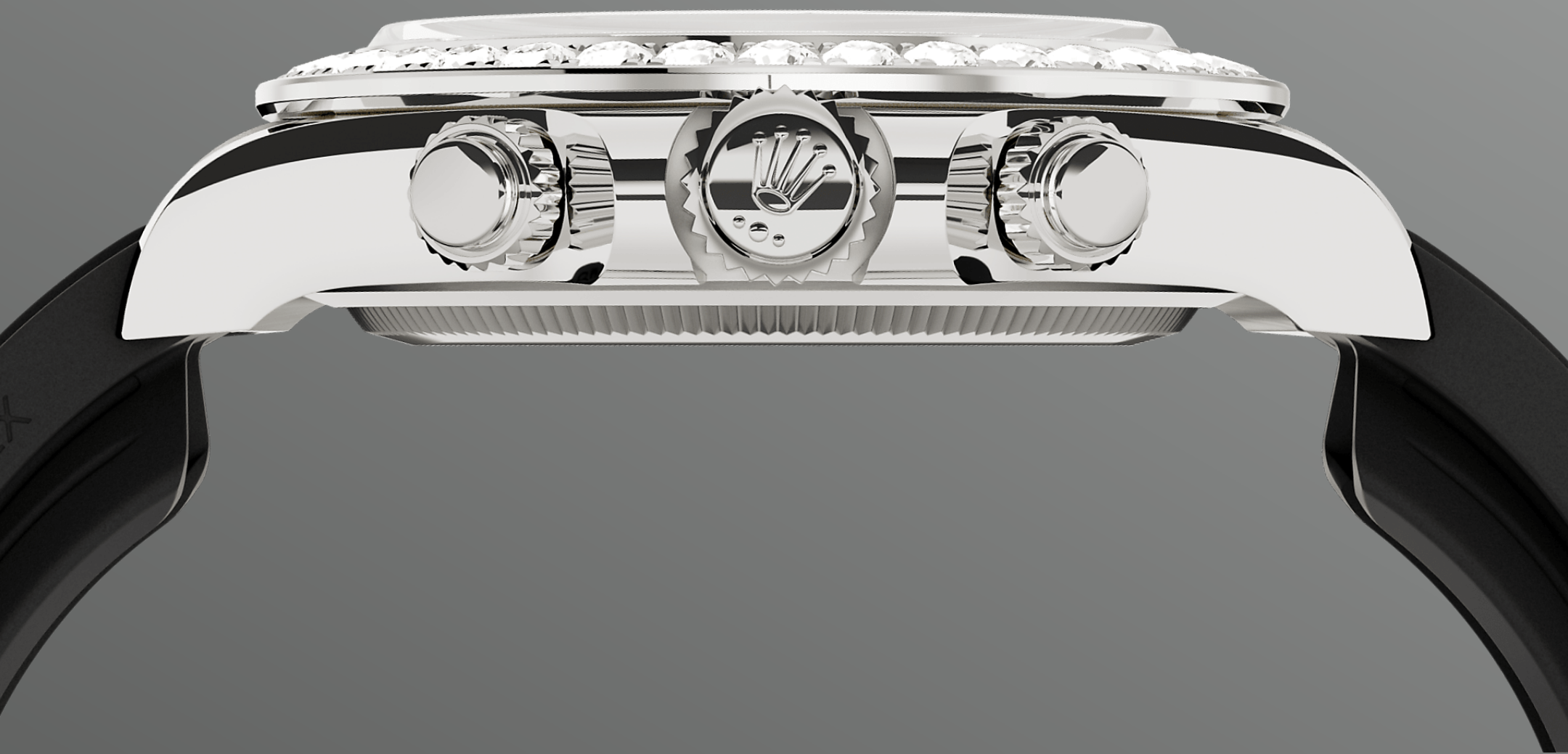
                                        

Oysterflex                                

      Rolex Glidelock                 



18K    



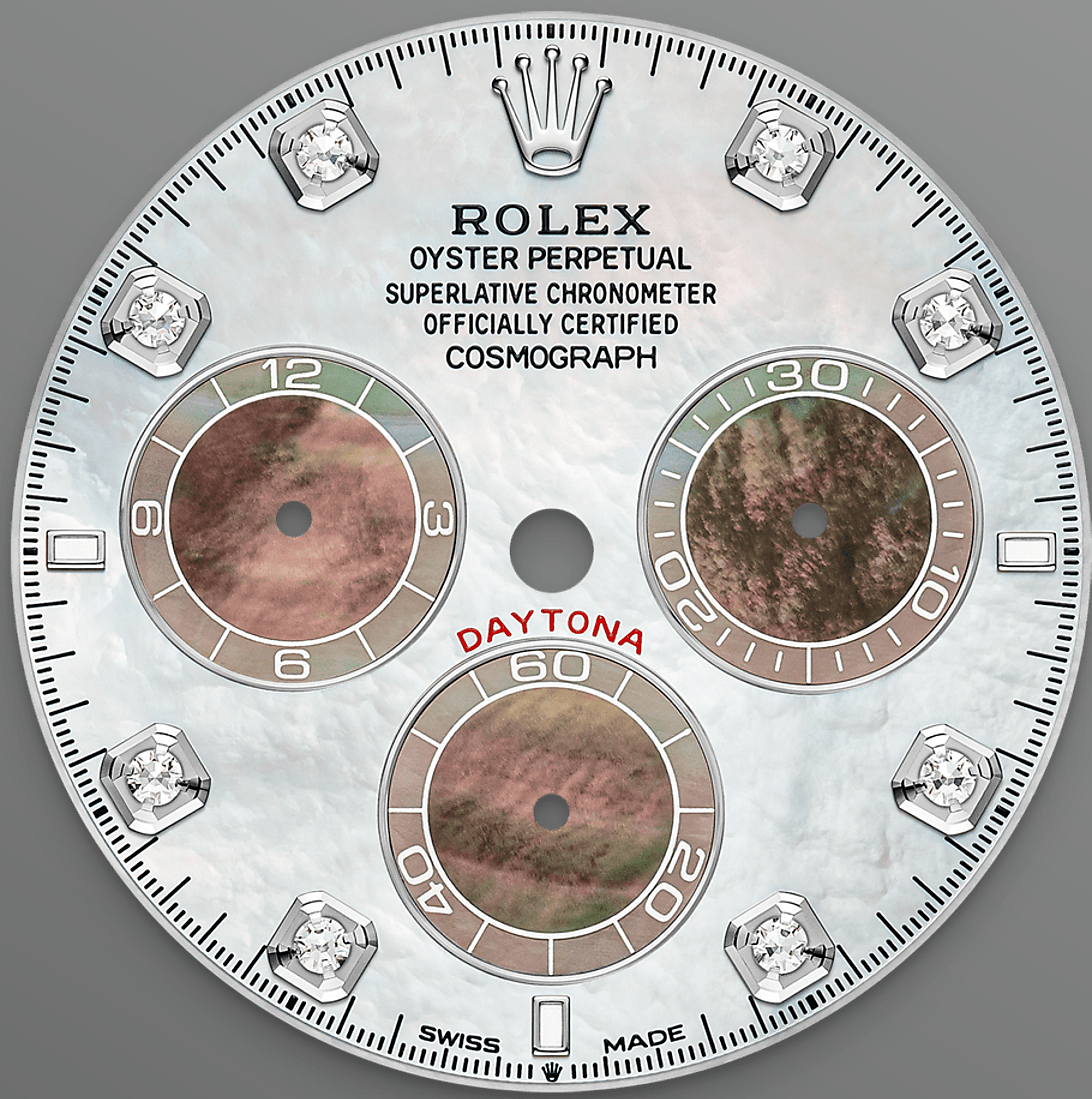
                                    

18K               



◇ ◇ ◇ ◇ ◇

◇ ? ◇ ? ◇ ? ◇ ?

◇ ◇ ◇ ◇ ◇ ◇ ◇ ◇ ◇ ◇ ◇ ◇ ◇ ◇ ◇ ◇ ◇ ◇ 8 ◇ ◇ ◇ ◇ ◇ 3 ◇

Chromalight ◇

◇ ◇

◇ ◇ ◇ ◇ ◇ ◇ ◇ ◇ ◇ ◇ ◇ ◇ ◇ ◇ ◇ ◇ ◇

◇ ◇

◇ ◇ ◇ ◇ ◇ ◇ ◇ ◇ ◇ ◇ ◇ ◇ ◇



# more technical-details



reference 126589RBR

## model-case

---

### type

40

### diameter

40

### material

### bezel

### oyster-architecture

### winding-crown

### crystal

### water-resistance

100/330

## movement

---

### type

### calibre

4131

### precision

### oscillator

Parachrom

Paraflex

### winding

### power-reserve

72

### functions

6

30 12

3 9

# bracelet

---

## type

Oysterflex

## clasp

Rolex Glidelock

## bracelet-material

# dial

---

## type

## details

Chromalight

# certification

---

## type

COSC +



# explore-title

**explore-text**

explore-text-2

