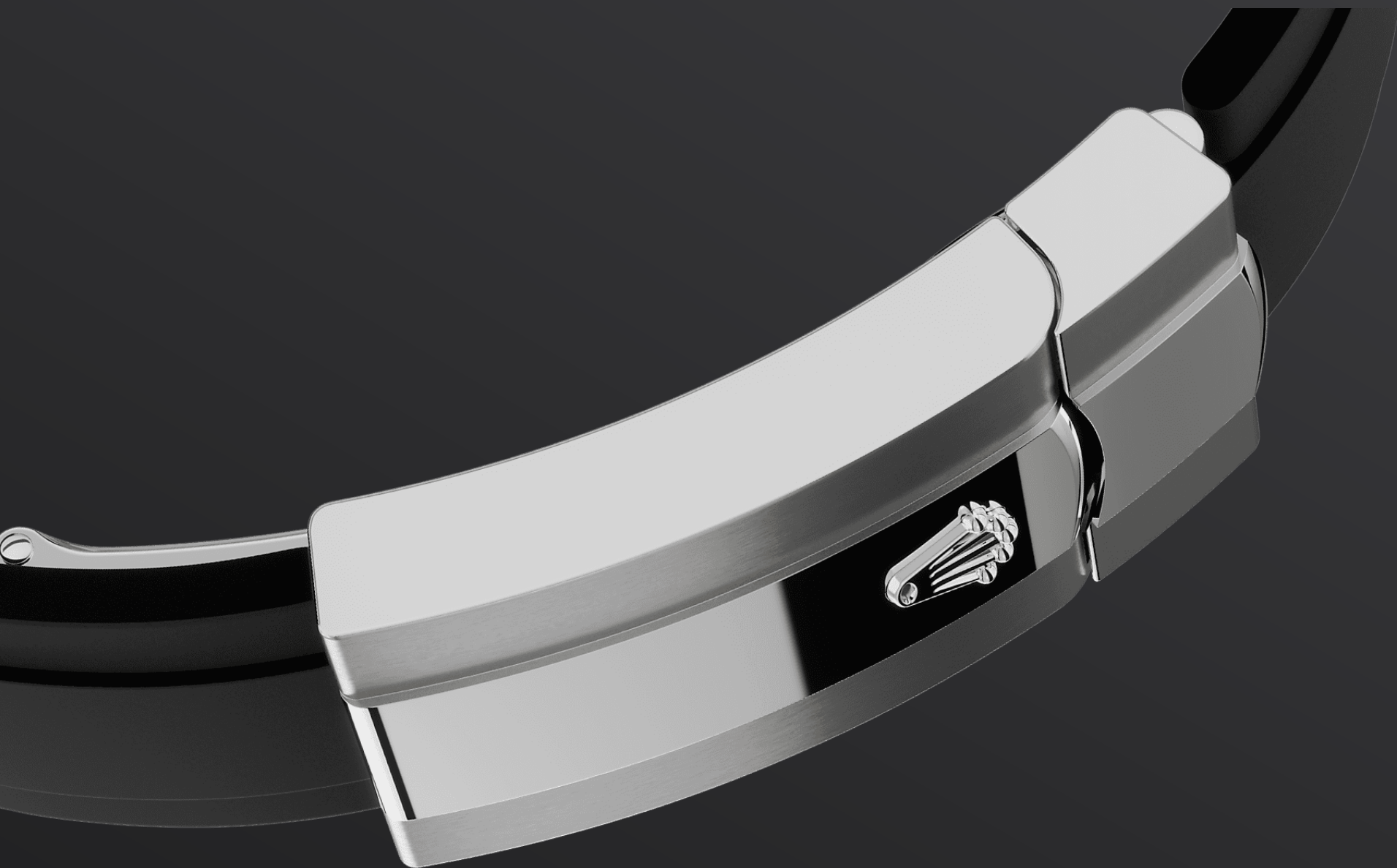




◆ ◆ ◆ ◆ ◆ ◆ ◆ ◆ ◆ ◆ 18K

◆ ◆ ◆ ◆ ◆ ◆ ◆ ◆ ◆ ◆ ◆ ◆

◆ ◆ Oysterflex ◆ ◆ ◆



OYSTERFLEX



Oysterflex
18K
Rolex Glidelock
2.5
15




Oysterflex
18K
Rolex Glidelock
2.5
15



18K    



                                   18K      

18K               



???

???

24?????
?????
?????

?????12?????
?????
?????30?????
?????2?????28?????29?????3?1?
?????
?????



???

???

?????
?????
?????

?????
?????
?????

????? Ring

Command ?????

?????
??

more technical-details



reference 336239

model-case

type

42

diameter

42

material

bezel

Ring

Command

oyster-architecture

winding-crown

crystal

water-resistance

100/330

movement

type

calibre

9002

precision

oscillator

Parachrom

Paraflex

winding

power-reserve

72

functions

24
3
12

bracelet

type

Oysterflex

clasp

Rolex Glidelock

bracelet-material

dial

type

details

Chromalight

certification

type

COSC+

explore-title

explore-text

explore-text-2

